

/ COUPE

# 2021 CLA



# 2021 CLA

05

KEY FEATURES

06

MODEL OVERVIEW

11

PACKAGES

12

COUPE

16

AMG COUPE

20

BUILD YOUR OWN

25

OWNERSHIP



# STYLISH LOOKS GOOD ON YOU

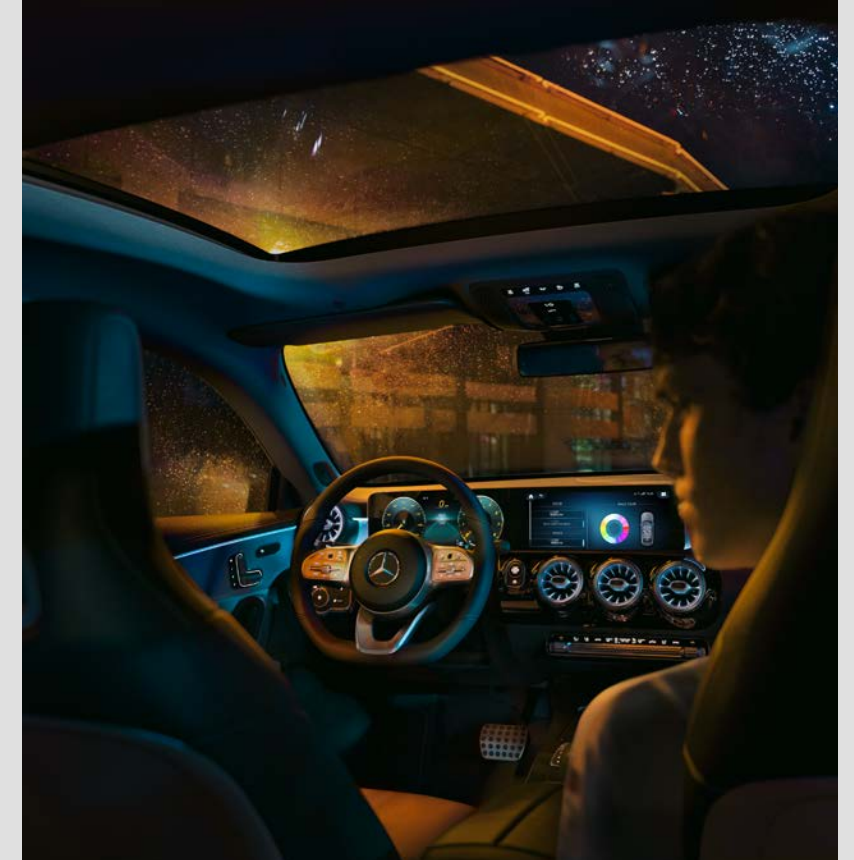


Standard and available equipment may vary by model. Please see back of brochure.



# THE 2021 CLA

What if every day could feel a little more special, and far less “everyday?” Wouldn’t that be beautiful? It doesn’t have to start with a trust fund or a lucky lottery ticket. Just find what suits and satisfies you, and wear it well. The CLA, for example, wraps innovations you’ll love in a shape you can’t resist. All at a price within reach. Style, it turns out, pairs very well with substance. And that’s a thing of beauty.



# KEY FEATURES



The seduction of the CLA only starts with its looks and price. Turbo power performs with enthusiasm. A virtual voice assistant responds with intelligence. Innovative luxuries answer your needs and desires.

## LUXURY 08

Power tinted glass Panorama roof  
Power front seats, each with 3-position memory  
Heated or heated/ventilated front seats\*  
40/20/40-split folding 3-passenger rear seat  
Dual-zone climate control  
64-color LED ambient lighting  
Burmester® surround sound\*



## PERFORMANCE 09

Engines: Inline-4 turbo, AMG-enhanced inline-4 turbo, or handcrafted AMG inline-4 turbo  
18"-19" alloy wheels\*<sup>1</sup>  
DYNAMIC SELECT drive modes  
Variable-torque 4MATIC®, AMG Performance 4MATIC or AMG Performance 4MATIC+ all-wheel drive\*  
AMG Sport Suspension, or AMG RIDE CONTROL w/3-stage damping\* (AMG models)



## SAFETY 10

Intelligent Drive\* driver assistance suite, including Active Distance Assist DISTRONIC®, Active Steering Assist, Active Brake Assist w/Cross-Traffic Function, Active Lane Change and Speed Limit Assists, PRE-SAFE® PLUS, PRE-SAFE Sound, Route-based Speed Adaptation  
Rearview camera, Blind Spot Assist w/Exit Warning  
Surround View System and PARKTRONIC w/Active Parking Assist\*



## TECHNOLOGY 10

Dual 7" or 10.25"\* digital instrument cluster and central multimedia touchscreen, steering-wheel Touch Control Buttons, console touchpad  
Apple CarPlay™ and Android Auto  
Mercedes-Benz User Experience (MBUX) w/"Hey, Mercedes" voice assistant; MBUX gesture control\*  
*Mercedes me connect* featuring smartphone app with Remote Start, 4G LTE WiFi,\* and more<sup>2</sup>



BACK TO INDEX

05

KEY FEATURES

\*Optional or not available on some models. Please see endnotes at back of brochure.



### SENSIBLE AND SENSUAL IN PERFECT PROPORTIONS

There are things you do because you have to, and some because you want to. Some are both at once, like your workout regimen or dining adventures. Some vary from day to day: Will you just get dressed, or get dressed up? Driving is, well, all over the map, no pun intended. Your car can feel like your escape module even on the evening commute. It can inspire you to turn around for an extra glance before you leave the garage. It can turn a traffic jam into a solo karaoke session. It can be your loyal sidekick on the trip of a lifetime, and a royal chariot on the most important day of your life. And it can, or should, be a steady source of moving joy.

Can one car exude passion and excel logically—not merely as a compromise, but intensely both? One car just might. It's a sleek and stylish coupe, from its sharknose grille to its arching profile, yet it has four doors and seating for five. It's agile and sporty, yet reassuring and solid. Its digital cockpit, touch controls and voice assistant are at the forefront of thinking. Yet it's also thoughtful—with memory front seats, a giant glass sunroof, and nearly all the advanced driver assists\* of its larger siblings. The CLA is that one car—actually four, including two AMG models—that can win over your brain and heart not just with its body, but from its soul.



### MODELS

**CLA 250 COUPE**  
221-hp inline-4 turbo, 7-speed dual-clutch automatic, front-wheel drive

**CLA 250 4MATIC COUPE**  
221-hp inline-4 turbo, 7-speed dual-clutch automatic, variable-torque 4MATIC® all-wheel drive

**AMG CLA 35 COUPE**  
AMG-enhanced 302-hp inline-4 turbo, 7-speed AMG SPEEDSHIFT® DCT dual-clutch automatic, AMG Performance 4MATIC all-wheel drive

**AMG CLA 45 COUPE**  
Handcrafted AMG 382-hp inline-4 turbo, 8-speed AMG SPEEDSHIFT DCT dual-clutch automatic, AMG Performance 4MATIC+ all-wheel drive with AMG TORQUE CONTROL



21

\*Some features are optional. Please see Build Your Own and endnotes at back of brochure.





### A CLASS OF TOUCH

Every point of contact in the CLA cabin is intended to connect with you on a distinctly rewarding level. Seat-shaped switches—a design originally patented by Mercedes-Benz—are literally icons of intuitive ergonomics. Touchpads on the steering wheel and console let you swipe through menus on the dual dash displays, simplifying a world of luxury features

and settings. Dash vents evoke an executive jet's, further set aglow by 64-color ambient lighting you can use to set a new mood on demand. Activated charcoal and micron filters help the climate control refresh you, while the standard Panorama roof can offer a sunny breeze, starlit sky, or cool shade. The CLA's luxuries strive to be a touch more rewarding.

### LUXURY HIGHLIGHTS

Power front seats with 3-position memory  
 Heated, ventilated and/or multicontour front seats\*  
 AMG Performance front seats with multicontour adjustment (AMG models)\*  
 Dual-zone climate control with dust, pollen and activated-charcoal odor filters

Burmester® Surround Sound\*  
 64-color LED ambient lighting, including dash vents  
 Heated steering wheel\*  
 Power tinted-glass Panorama roof  
 Aluminum or natural-grain wood\* cabin trim

\*Optional or not available on some models.  
 Please see endnotes at back of brochure.





**TIME IN A SHIFT**

Every CLA has two clutches. But there's no clutch pedal. Internally, the fully automatic gearbox starts to engage the next gear before leaving the current gear. Which means it can shift faster than a human. A pair of paddles behind the steering wheel let you manually shift anytime with a finger flick. But leave it in D and it's an efficient—and quick—automatic.

Every measure of CLA performance takes on extra dimensions of quickness. A twin-scroll turbo turns a small engine into upsized power and torque. Their Direct Injection and multispark ignition can self-tune in milliseconds, as you drive. And selectable modes let you tune your CLA's driving character from ECO to Sport to custom Individual with a few quick taps.

**PERFORMANCE HIGHLIGHTS**

2.0L inline-4 twin-scroll turbo engine: 221 hp (CLA 250), AMG-enhanced 302 hp (CLA 35), or handcrafted 382 hp (CLA 45)

Transmission: 7G-DCT dual-clutch 7-speed automatic with shift paddles (CLA 250); 7-speed (CLA 35) or 8-speed (CLA 45) AMG SPEEDSHIFT® DCT with shift paddles

Front-wheel drive, or variable-torque 4MATIC® or AMG Performance 4MATIC all-wheel drive\*

DYNAMIC SELECT driving modes

18" or 19" alloy wheels\*<sup>1</sup>

4-wheel independent suspension; AMG Sport Suspension or AMG RIDE CONTROL with 3-stage damping\* (AMG models)



\*Optional or not available on some models. Please see endnotes at back of brochure.

Artificial intelligence helps the CLA's virtual voice assistant learn over time. Real ingenuity and continual innovation help a CLA detect imminent danger. It's all part of a never-ending investment in making every moment matter.



### COORDINATION OF SENSE

Talk, and your wish becomes your CLA's action. Swipe, and its displays scroll. Watch, and twin screens— in 7" or 10.25"\* sizes, plus a Head-Up Display\*—inform you at a glance. The Mercedes-Benz User Experience (MBUX) is a digital cockpit you can control numerous ways. By touch: via steering-wheel and console touchpads and a central touchscreen. By voice: Say "Hey, Mercedes" to operate features by talking normally, like "I'm cold" to turn up the heat. Say "I'm hungry" and MB Navigation\* can search, then show turns with live on-screen video, overlaid with guiding graphics. Or by pointing: With gesture controls.\* And MBUX is not just easy to learn. Use it, and it can learn you and become more adaptive and predictive over time.

### TECHNOLOGY HIGHLIGHTS

- Mercedes-Benz User Experience (MBUX) with natural voice assistant, touchscreen, console touchpad, and steering-wheel Touch Controls
- Dual 7" or 10.25"\* displays: reconfigurable instrument cluster, multimedia touchscreen
- MBUX Interior Assistant (gesture control)\*
- Over-the-air software updating<sup>2</sup>
- MB Navigation\* w/augmented video using live imagery of surroundings<sup>9</sup>
- Apple CarPlay™ and Android Auto<sup>10</sup>
- Four USB-C ports<sup>11</sup>; wireless charging\*
- Head-Up Display\*<sup>12</sup>

### FUTURE FOR THE OUTLOOK

Even the most attentive human can't look multiple ways, all the time. So Mercedes-Benz engineers developed a network of radar, cameras and other sensors that are like unblinking virtual eyes on your real world. Every CLA can watch ahead and your blind spots to help avoid accidents, and warn you if it's not ok to open a door after parking. Options include hands-free parking, and a new built-in dashcam. Another package can adapt your cruise speed as the limit changes, let you change lanes by tapping a turn signal, help keep you from turning across oncoming traffic, and trigger your ears' natural defenses for loud noises before a crash. A CLA looks out for your outlook.

### SAFETY HIGHLIGHTS

- Radar-based Active Brake Assist frontal collision mitigation<sup>3</sup>; Blind Spot Assist with Exit Warning Assist<sup>4</sup>; rearview camera<sup>5</sup>
- PARKTRONIC w/Active Parking Assist<sup>6</sup> and Surround View System\*<sup>5</sup>; dashcam\*
- Driver Assistance Package\*<sup>7</sup> including Active Distance Assist DISTRONIC® cruise control; Active Steering Assist; Evasive Steering Assist; Route-based Speed Adaptation; Active Brake Assist w/Cross-Traffic Function; PRE-SAFE® PLUS with rear-impact preparation and hearing protection technology<sup>8</sup>; and Active Blind Spot, Emergency Stop, Lane Change, Lane Keeping, and Speed Limit Assists



\*Optional or not available on some models. Please see endnotes at back of brochure.

# OPTION PACKAGES

Generously appointed from the get-go, a menu of options and thoughtfully curated packages let you tailor your CLA to be a perfect fit.



## EXTERIOR LIGHTING PACKAGE

Active LED headlamps  
Adaptive Highbeam Assist



## STYLING PACKAGES

AMG Line (CLA 250):  
AMG body styling  
Chrome diamond-block grille  
18" AMG® twin 5-spoke wheels<sup>1</sup>  
Sport steering wheel<sup>13</sup>  
Brushed stainless steel pedals  
AMG floor mats  
Night Package adds:  
Gloss-black exterior and wheel accents



## PREMIUM PACKAGE

Auto-dimming inside and left-side mirrors  
Power-folding side mirrors  
CLA 250 also includes:  
10.25" digital instrument cluster display  
10.25" touchscreen multimedia display  
CLA 35 adds:  
KEYLESS-GO®  
HANDS-FREE ACCESS trunk opener  
(All items standard on CLA 45)

CLA COUPE

*INSPIRED  
DESIGN*

CLA 250 / CLA 250 4MATIC

*IGNITES  
DESIRE*





CLA 250

/ 221-HP INLINE-4 TURBO ENGINE  
/ PATAGONIA RED  
/ 19" AMG® MULTISPOKE WHEELS<sup>1</sup>

/ AMG LINE  
/ EXTERIOR LIGHTING PACKAGE  
/ DRIVER ASSISTANCE PACKAGE

# CLA 250 Coupe **SPECIFICATIONS**

**/ ENGINE** 2.0L inline-4 turbo

**/ TRANS** 7G-DCT 7-speed auto

**/ POWER** 221 hp @ 5,500 rpm

**/ 0-60 MPH** → 6.3 sec<sup>14</sup> **/ DRIVE**

Front-wheel or 4MATIC<sup>®</sup> all-wheel

**/ WHEELS** 18" multispoke<sup>1</sup>

COUPE  
COUPE  
**COUPE**  
COUPE  
COUPE

BACK TO INDEX

15

CLA COUPE



BACK TO INDEX

15

CLA COUPE

True style isn't about showing off labels or name-dropping. It radiates from within the wearer. How does a car with a glistening Star in its grille—one that dares to call its 4-door body a coupe—boldly make such a claim? Simple: For all of automotive history, the very essence of a Mercedes-Benz coupe has been a magic potion of athleticism and elegance that allows both to exist at full strength. And in a CLA 250, that magic is evident in its alluring shape, its inviting cabin, and its rewarding performance. Its lines are uncluttered by common cliché. Its iconic grille is gracefully sized and given

a slight forward lean, to express the energetic turbo power under the twin power domes of its hood. Its digital cockpit fuses ultramodern tech with humanity, not just in its virtual voice assistant but in flowing design, well-crafted feel, and thoughtful appointments from a giant glass sunroof to four USB-C ports. And it takes to the road with agility and vigor—even more so in the CLA 250 4MATIC, whose all-wheel drive can vary torque front-to-rear in response to the conditions. Is surefootedness stylish? Confidence surely is. Style isn't the names you wear. It's what you make your name mean.

**221-HP 2.0L INLINE-4 TURBO ENGINE. FRONT-WHEEL DRIVE OR VARIABLE-TORQUE 4MATIC® ALL-WHEEL DRIVE. POWER GLASS PANORAMA ROOF. LED HEADLAMPS AND TAILLAMPS. BLIND SPOT ASSIST W/EXIT WARNING. 18" ALLOY WHEELS<sup>1</sup> (OPTIONS TO 19"). DUAL COLOR DIGITAL DISPLAYS, WITH CENTRAL MULTIMEDIA TOUCHSCREEN. MBUX WITH "HEY, MERCEDES" DIGITAL VOICE ASSISTANT. APPLE CARPLAY™ AND ANDROID AUTO.<sup>10</sup>**

COUPE  
COUPE

AMG CLA COUPE

*INTENSE  
HEAT*

AMG CLA 35 / AMG CLA 45

*SPARKS  
PASSION*





**AMG**

DRIVING PERFORMANCE



**AMG CLA 45**

/ HANDCRAFTED 382-HP AMG  
/ INLINE-4 TURBO ENGINE  
/ AMG PERFORMANCE 4MATIC+

/ COSMOS BLACK  
/ 19" AMG® FORGED-ALLOY WHEELS<sup>1</sup>  
/ AMG NIGHT AND AERO PACKAGES

# AMG CLA 45 SPECIFICATIONS

**/ENGINE** Handcrafted AMG 2.0L

inline-4 turbo **/POWER** 382 hp

@ 6,500 rpm **/0-60 MPH** →

4.0 sec<sup>14</sup> **/DRIVE** Variable-torque

AMG Performance 4MATIC+

**/WHEELS**<sup>1</sup> 19" AMG<sup>®</sup> twin 5-spoke



Fame is one way to turn good looks into power. Mercedes-AMG vehicles are famous for being beautifully powerful and vice-versa. Power, of course, means more than the horses that stampede from under the hoods of the 302-hp CLA 35 and 382-hp CLA 45. It also means the tenacity to grip the pavement from launch to lateral Gs. The strength to shed speed over and over. And the most important power of all: the bond between car and driver. Each AMG CLA does this in its own way, even though they share countless elements from their muscular 4-door coupe shape to their advanced digital cockpits. The CLA 35 engine is AMG-enhanced with

increased turbo boost and more. AMG Performance 4MATIC is integrated with the dual-clutch 7-speed, saving weight as it provides fully variable torque and 0–60 in 4.8 seconds.<sup>14</sup> The CLA 45's AMG Performance 4MATIC+ offers the all-out fun of a rear-drive sports car, with the precise rear-wheel vectoring of AMG TORQUE CONTROL. The AMG DYNAMIC PLUS Package\* further hones its skills. And its hand-built engine features two-stage direct/port injection, a stronger chilled-cast block, and 0–60 in just 4.0 seconds. And with 30.5 psi of max turbo boost and most hp of any 4-cylinder in production, you might say it has hall-of-fame induction.

302-HP AMG-ENHANCED (CLA 35) OR 382-HP HANDCRAFTED AMG (CLA 45) INLINE-4 TURBO ENGINE.

AMG SPEEDSHIFT® DCT 7-SPEED (CLA 35) OR 8-SPEED (CLA 45).

AMG PERFORMANCE 4MATIC® (CLA 35) OR 4MATIC+ (CLA 45) AWD.

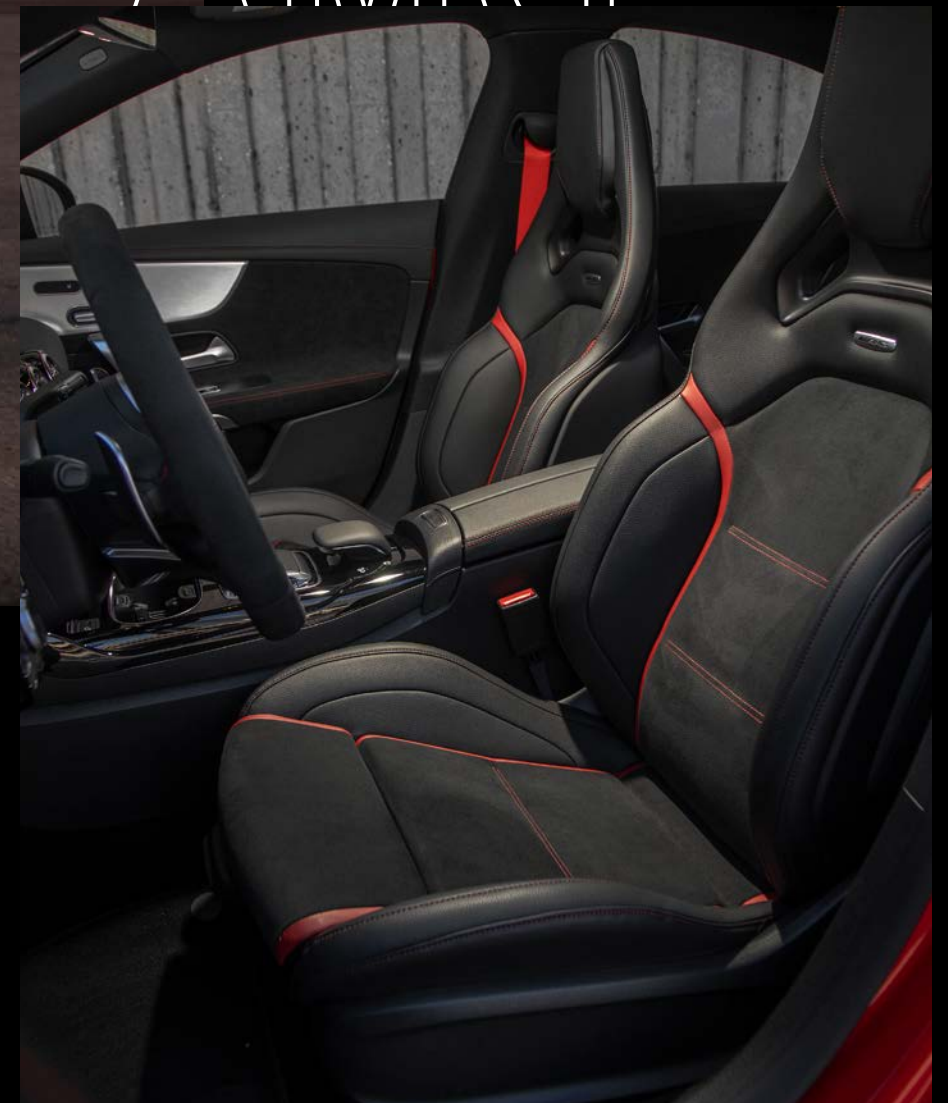
AMG DYNAMIC SELECT DRIVE MODES, AMG DRIVE UNIT.\*

AMG SPORT EXHAUST.

AMG SPORT SUSPENSION, OR 3-STAGE AMG RIDE CONTROL.\*

18" OR 19"\* AMG® WHEELS.<sup>1</sup>

AMG  
AMG  
AMG  
AMG  
AMG



AMG  
AMG

# BUILD YOUR OWN

● Standard ○ Optional ▲ No-charge option — Not available

SPECIFICATIONS		CLA 250 / CLA 250 4MATIC	AMG CLA 35	AMG CLA 45
Engine	Type	2.0L inline-4 turbo with Direct Injection	AMG-enhanced 2.0L inline-4 turbo with Direct Injection	Handcrafted 2.0L inline-4 turbo with Direct Injection
	Power	221 hp @ 5,500 rpm	302 hp @ 5,800–6,100 rpm	382 hp @ 6,500 rpm
	Torque	258 lb-ft @ 1,800–4,000 rpm	295 lb-ft @ 3,000–4,000 rpm	354 lb-ft @ 3,000–4,000 rpm
Automatic transmission		7G-DCT dual-clutch 7-speed with shift paddles	AMG SPEEDSHIFT® DCT dual-clutch 7-speed with shift paddles	AMG SPEEDSHIFT DCT dual-clutch 8-speed with shift paddles
Acceleration, 0–60 mph <sup>14</sup>		6.3 sec	4.8 sec	4.0 sec
Wheels <sup>1</sup>		18" multispoke with all-season Extended Mobility tires <sup>1</sup>	18" AMG® twin 5-spoke with all-season Extended Mobility tires <sup>1</sup>	19" AMG twin 5-spoke with high-performance tires <sup>1</sup>
Suspension		4-wheel independent, strut/wishbone front and multilink rear	AMG Sport Suspension, 4-wheel independent strut/wishbone front and multilink rear	AMG Sport Suspension, 4-wheel independent strut/wishbone front and multilink rear
Drivetrain		Front-wheel drive / 4MATIC® variable-torque all-wheel drive	AMG Performance 4MATIC variable-torque all-wheel drive	AMG Performance 4MATIC+ fully variable all-wheel drive with AMG TORQUE CONTROL

DIMENSIONS		CLA 250 / CLA 250 4MATIC	AMG CLA 35	AMG CLA 45
Wheelbase		107.4"	107.4"	107.4"
Overall length		184.6"	184.8"	184.8"
Overall height		56.7"	55.3"	55.4"
Overall width	w/mirrors	78.7"	78.7"	78.7"
Curb weight		3,362 lbs / 3,483 lbs	3,505 lbs	3,660 lbs
Headroom	front–rear	38.5" / 35.7"	38.5" / 35.7"	38.5" / 35.7"
Legroom	front–rear	41.8" / 33.9"	41.8" / 33.9"	41.8" / 33.9"
Shoulder room	front–rear	55.1" / 54.0"	55.1" / 54.0"	55.1" / 54.0"
Cargo capacity <sup>16</sup>		11.6 cu ft	11.6 cu ft	11.6 cu ft

## KEY STANDARD FEATURES

CLA 250	CLA 250 4MATIC	AMG CLA 35	AMG CLA 45	PERFORMANCE AND EFFICIENCY
●	●	●	●	ECO Start/Stop system
●	●	—	—	DYNAMIC SELECT with ECO, Comfort, Sport and Individual modes
—	—	●	●	AMG DYNAMIC SELECT with Comfort, Slippery, Sport, Sport+ and Individual modes
—	—	—	●	RACE START function
●	●	●	●	Electric parking brake with automatic release in Drive or Reverse
—	●	—	—	4MATIC variable-torque all-wheel drive
—	—	●	●	AMG Performance 4MATIC variable-torque all-wheel drive
—	—	—	●	AMG Performance 4MATIC+ fully variable all-wheel drive
●	●	●	●	Torque Vectoring Brake ESP® Dynamic Cornering Assist on AMG models
—	—	—	●	AMG TORQUE CONTROL with torque-vectoring rear differential
—	—	●	●	AMG Sport Exhaust System
—	—	●	●	AMG High-performance Braking System

## SAFETY AND SECURITY

●	●	●	●	Active Brake Assist <sup>2</sup>
●	●	●	●	ATTENTION ASSIST® <sup>15</sup>
●	●	—	—	Electronic Stability Program (ESP®)
—	—	●	●	3-stage Electronic Stability Program (ESP)
●	●	●	●	Adaptive braking technology: Predictive Brake Priming, Automatic Brake Drying, Hill-Start Assist, brake HOLD feature
●	●	●	●	Emergency-sensing Brake Assist (BAS®)
●	●	●	●	Crosswind Assist
●	●	●	●	Advanced Tire Pressure Monitoring System
●	●	●	●	Rearview camera <sup>3</sup>
●	●	●	●	Blind Spot Assist with Exit Warning Assist <sup>4</sup>
●	●	●	●	Mercedes-Benz Emergency Call <sup>2</sup>
●	●	●	●	8 air bags
●	●	●	●	LED headlamps, Daytime Running Lamps, and taillamps
●	●	●	●	Automatic light-sensing headlamps
●	●	●	●	SmartKey remote locking
●	●	●	●	Pushbutton KEYLESS-START
○	○	○	○	KEYLESS-GO® with HANDS-FREE ACCESS trunk opener
●	●	●	●	Antitheft alarm system with remote panic feature

CLA 250	CLA 250 4MATIC	AMG CLA 35	AMG CLA 45	COMFORT AND CONVENIENCE
●	●	●	●	Power front seats with 3-position memory and power lumbar support
●	●	●	●	Adjustable cushion length for front seats
○	○	○	○	Sport front seats
○	○	○	○	Heated front seats
●	●	●	●	3-passenger rear seat with 40/20/40-split folding/reclining seatbacks <sup>14</sup>
○	○	○	○	Integrated front and outboard rear head restraints
●	●	●	●	Folding rear center armrest w/dual cupholders
●	●	●	●	Manually adjustable tilt/telescoping steering column
●	●	●	●	Multifunction steering wheel with Touch Control Buttons
○	○	○	○	Steering wheel with leather trim
○	○	○	○	Sport steering wheel with flat-bottom design and Nappa leather trim
●	●	●	●	Power tilt/sliding tinted glass Panorama roof
●	●	●	●	Dual-zone automatic climate control with dust/pollen and odor filters
●	●	●	●	Front cupholders
●	●	●	●	64-color LED ambient lighting with illuminated dash vents
●	●	●	●	Rain-sensing windshield wipers
●	●	●	●	Heated power side mirrors
○	○	○	○	Power-folding side mirrors
○	○	○	○	Auto-dimming driver-side and inside rearview mirrors; compass

## ENTERTAINMENT AND NAVIGATION

●	●	—	—	Reconfigurable 7" digital instrument cluster
○	○	○	○	Reconfigurable 10.25" digital instrument cluster
○	○	—	—	7" high-resolution color touchscreen multimedia display
○	○	○	○	10.25" high-resolution color touchscreen multimedia display
●	●	●	●	Console-mounted touchpad controller with multitouch gestures
●	●	●	●	Color multifunction display (integrated with instrument cluster)
●	●	●	●	Mercedes-Benz User Experience (MBUX)
●	●	●	●	"Hey, Mercedes" voice assistant with Natural Language Understanding
●	●	●	●	Smartphone Integration with Apple CarPlay™ and Android Auto <sup>10</sup>
●	●	●	●	Bluetooth® audio streaming
●	●	●	●	Hands-free Bluetooth interface
●	●	●	●	Four USB-C ports <sup>11</sup>
●	●	●	●	HD Radio® receiver
●	●	●	●	3 years of Mercedes me connect services <sup>2</sup>

CLA 250	CLA 250 4MATIC	AMG CLA 35	AMG CLA 45	OPTION PACKAGES
○	○	○	●	<b>Premium Package</b> <ul style="list-style-type: none"> <li>10.25" digital instrument cluster display <i>Std all AMG models</i></li> <li>10.25" touchscreen multimedia display <i>Std all AMG models</i></li> <li>Auto-dimming driver-side and inside rearview mirrors</li> <li>Power-folding side mirrors</li> <li>KEYLESS-GO with HANDS-FREE ACCESS trunk opener <i>CLA 35 only</i></li> </ul>
○	○	○	○	<b>Multimedia Package</b> <i>Requires Premium Pkg</i> <ul style="list-style-type: none"> <li>MB Navigation<sup>9</sup></li> <li>MBUX Augmented Video for Navigation</li> <li>3 years of no-charge online navigation map updates<sup>2</sup></li> <li>3 years of Live Traffic Information<sup>2</sup></li> <li>Speed Limit Assist</li> </ul>
○	○	○	○	<b>Exterior Lighting Package</b> <ul style="list-style-type: none"> <li>Active LED headlamps</li> <li>Adaptive Highbeam Assist</li> </ul>
○	○	○	○	<b>Driver Assistance Package</b> <i>Requires Multimedia Pkg</i> <ul style="list-style-type: none"> <li>Active Distance Assist DISTRONIC® Active Steering Assist<sup>17</sup></li> <li>Active Brake Assist w/Cross-Traffic Function<sup>18</sup></li> <li>Active Blind Spot Assist<sup>4</sup> Active Lane Keeping Assist<sup>15</sup></li> <li>Active Lane Change Assist<sup>19</sup></li> <li>Route-based Speed Adaptation<sup>20</sup> Active Speed Limit Assist</li> <li>Evasive Steering Assist<sup>21</sup> Active Emergency Stop Assist</li> <li>PRE-SAFE®, PRE-SAFE PLUS rear impact preparation, and PRE-SAFE Sound hearing protection technology<sup>8</sup></li> </ul>
○	○	○	○	<b>Parking Assistance Package</b> <ul style="list-style-type: none"> <li>PARKTRONIC with Active Parking Assist<sup>6</sup></li> <li>Surround View System<sup>5</sup></li> </ul>
○	○	—	—	<b>AMG Line</b> <i>Available with select interior colors (see next page)</i> <ul style="list-style-type: none"> <li>AMG body styling; chrome-tipped diamond-block grille</li> <li>18" AMG twin 5-spoke wheels<sup>1</sup>, silver</li> <li>Lowered comfort suspension</li> <li>Sport steering wheel with aluminum shift paddles<sup>13</sup></li> <li>Sport front seats; integrated front and outboard rear head restraints</li> <li>Brushed metal pedals; AMG floor mats</li> </ul>
○	○	—	—	<b>Night Package</b> <i>Requires AMG Line</i> <ul style="list-style-type: none"> <li>Gloss Black exterior accents</li> <li>18" AMG twin 5-spoke wheels<sup>1</sup> w/black accents</li> </ul>
—	—	○	○	<b>AMG Performance Seat Packages</b> <ul style="list-style-type: none"> <li><i>Seat Package:</i> Heated, multicontour AMG Performance front seats in Neva Grey/Black MB-TEX or Black MB-TEX/DINAMICA w/Red stitching</li> <li><i>Seat Package Advanced:</i> Multicontour AMG Performance front seats in Black or Bahia Brown leather <i>CLA 35 req. heated and/or ventilated seats</i></li> </ul>
—	—	—	○	<b>AMG Dynamic PLUS Package</b> <i>Requires Multimedia Pkg</i> <ul style="list-style-type: none"> <li>AMG Performance steering wheel in Nappa/DINAMICA</li> <li>AMG DYNAMIC SELECT RACE and DRIFT modes; AMG Track Pace</li> <li>AMG DRIVE UNIT steering-wheel performance controls</li> <li>AMG RIDE CONTROL Sport Suspension with 3-stage damping</li> <li>AMG Performance Braking System with red calipers</li> </ul>

CLA 250	CLA 250 4MATIC	AMG CLA 35	AMG CLA 45	INDIVIDUAL OPTIONS
○	○	○	●	KEYLESS-GO w/HANDS-FREE ACCESS trunk opener <i>Also in Premium Pkg</i>
○	○	○	○	Garage door opener <i>Requires Premium Pkg</i>
○	○	○	○	Side-impact air bags for outboard rear seats
—	—	○	○	AMG Night Package
—	—	○	○	AMG Aerodynamics Package <i>Requires AMG Night Pkg</i>
—	—	—	○	AMG Exterior Chrome Package <i>NA w/AMG Night Pkg</i>
—	—	○	○	AMG RIDE CONTROL Sport Suspension with 3-stage damping <i>Also in AMG DYNAMIC PLUS Pkg</i>
—	—	○	○	AMG Track Pace <i>Also in AMG Dynamic PLUS Pkg; requires Multimedia Pkg</i>
—	—	—	○	Increased top speed <sup>22</sup> <i>Also in AMG DYNAMIC PLUS Pkg</i>
○	○	○	●	Heated front seats <i>Also in AMG Performance Seat Pkg</i>
○	○	○	○	Heated and ventilated front seats <i>NA with MB-TEX/DINAMICA upholstery</i>
○	○	—	—	Multicontour front seats <i>NA with AMG Line; requires Black or Macchiato Beige MB-TEX upholstery; also in AMG Performance Seat Pkg</i>
○	○	—	—	Heated steering wheel <i>Replaces sport steering wheel in AMG Line</i>
—	—	○	○	AMG illuminated front door sills
○	○	○	○	Burmester® Surround Sound System
○	○	○	○	SiriusXM® 6-month All Access trial <sup>23</sup>
○	○	○	○	Inductive wireless charging and NFC pairing <sup>24</sup>
○	○	○	○	MBUX Interior Assistant (gesture control) <i>Requires Premium Pkg</i>
○	○	○	○	Head-Up Display <sup>12</sup> <i>AMG models include AMG-specific content</i>
○	○	○	○	Dashcam <i>Requires Multimedia Pkg</i>
—	—	○	○	AMG Performance steering wheel in Nappa leather
—	—	○	○	AMG Performance steering wheel in Nappa/DINAMICA <i>Also in AMG Dynamic PLUS Pkg</i>
—	—	○	○	AMG Performance steering wheel in DINAMICA <i>Includes AMG DRIVE UNIT</i>
—	—	○	○	AMG DRIVE UNIT steering-wheel performance controls <i>Requires any AMG Performance steering wheel; also in AMG Dynamic PLUS Pkg</i>
▲	▲	▲	▲	MB-TEX upholstery
▲	▲	▲	▲	MB-TEX/DINAMICA upholstery w/Red stitching <i>CLA 250 requires AMG Line; AMG models include red seat belts</i>
○	○	○	○	Leather upholstery <i>Requires heated and/or ventilated front seats; AMG models include topstitched MB-TEX upper dash trim</i>
—	—	▲	▲	Replace red seat belts with black <i>Available with MB-TEX/DINAMICA only</i>
●	●	●	●	Aluminum trim with linear grain
▲	▲	▲	▲	Brushed aluminum trim with longitudinal grain
—	—	▲	▲	Aluminum AMG design trim
○	○	○	○	Natural Grain Black Linden wood trim
○	○	○	○	Natural Grain Brown Walnut wood trim <i>NA with some upholstery colors</i>
○	○	○	○	Metallic or <i>designo</i> paintwork

Please see endnotes at back of brochure.

# UPHOLSTERY

● Standard ○ Optional ▲ No-charge option

## MB-TEX



▲ CLA 250  
Black or Macchiato Beige

## MB-TEX



▲ CLA 250  
Neva Grey/Black; requires AMG Line

▲ AMG CLA 35, CLA 45  
Neva Grey/Black

## MB-TEX/DINAMICA



▲ CLA 250  
Black w/Red topstitching; requires AMG Line

▲ AMG CLA 35, CLA 45  
Black w/Red topstitching

## LEATHER



○ CLA 250  
Requires heated and/or ventilated front seats

○ AMG CLA 35  
Requires heated and/or ventilated front seats; includes topstitched MB-TEX dash

○ AMG CLA 45  
Includes topstitched MB-TEX dash

## AMG PERFORMANCE FRONT SEATS



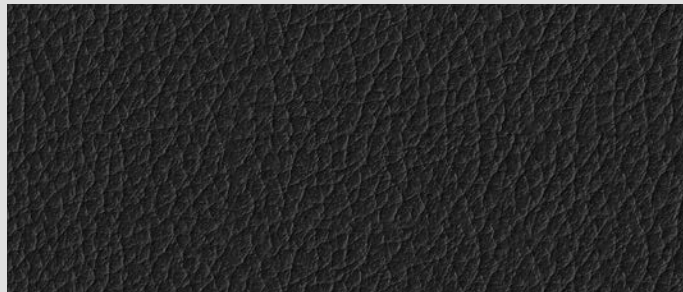
○ AMG CLA 35, CLA 45  
AMG Performance Seat Pkg, with Black MB-TEX/DINAMICA w/Red topstitching or Neva Grey/Black MB-TEX

○ AMG CLA 35, CLA 45  
AMG Performance Seat Pkg Advanced, with Black or Bahia Brown leather; requires heated and/or ventilated seats

# INTERIOR COLORS & TRIM

● Standard ○ Optional ▲ No-charge option

## BLACK



MB-Tex *CLA 250 (NA with AMG Line)*  
 Leather *CLA 250 (requires AMG Line)*  
*AMG models*

## MACCHIATO BEIGE



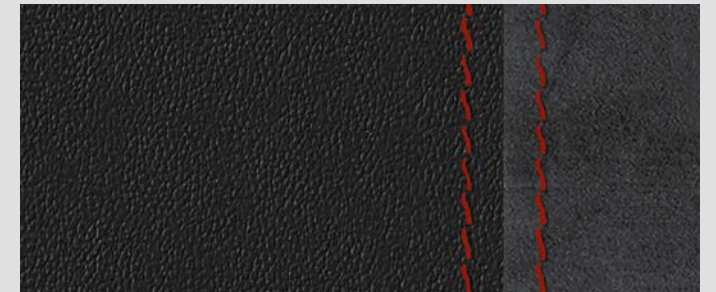
MB-Tex *CLA 250 (NA with AMG Line)*

## NEVA GREY/BLACK



MB-Tex *CLA 250 (requires AMG Line)*  
*AMG models*

## BLACK w/RED TOPSTITCHING



MB-Tex/DINAMICA *CLA 250 (requires AMG Line)*  
*AMG models (includes red seat belts;*  
*black seat belts available for no charge)*

## BAHIA BROWN



Leather *CLA 250 (requires AMG Line; NA with Patagonia Red metallic paint)*  
*AMG models*

## CLASSIC RED/BLACK



Leather *CLA 250 (requires AMG Line; NA with Denim Blue metallic paint)*  
*AMG models*

## TITANIUM GREY/BLACK



Leather *CLA 250 (requires AMG Line)*  
*AMG models*

## ALUMINUM WITH LINEAR GRAIN



● All models

## ALUMINUM WITH LONGITUDINAL GRAIN



▲ All models

## NATURAL GRAIN BLACK LINDEN WOOD



○ All models

## NATURAL GRAIN BROWN WALNUT WOOD



○ CLA 250 *NA w/Black w/Red topstitching, Classic Red/Black or Titanium Grey/Black*  
 ○ AMG models *NA w/Classic Red/Black or Titanium Grey/Black*

## ALUMINUM AMG DESIGN



▲ AMG models

# PAINTWORK

POLAR WHITE



NIGHT BLACK



SUN YELLOW



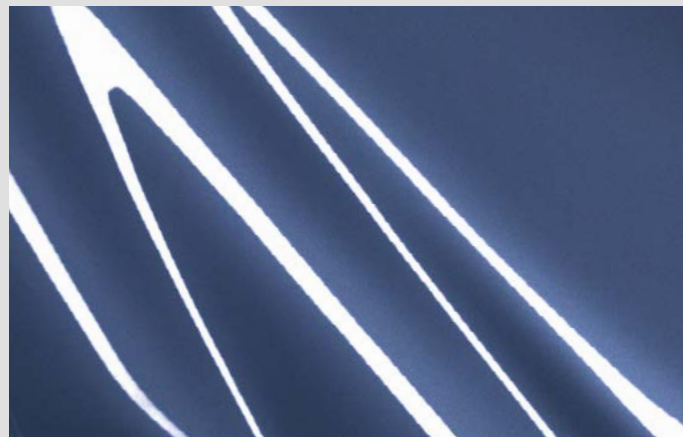
DIGITAL WHITE METALLIC



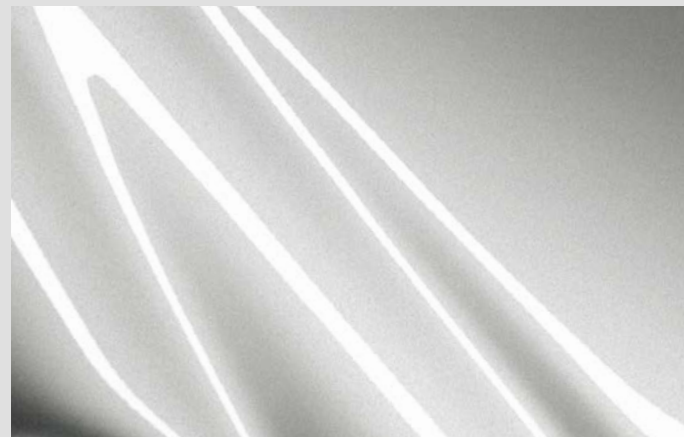
COSMOS BLACK METALLIC



DENIM BLUE METALLIC



IRIDIUM SILVER METALLIC



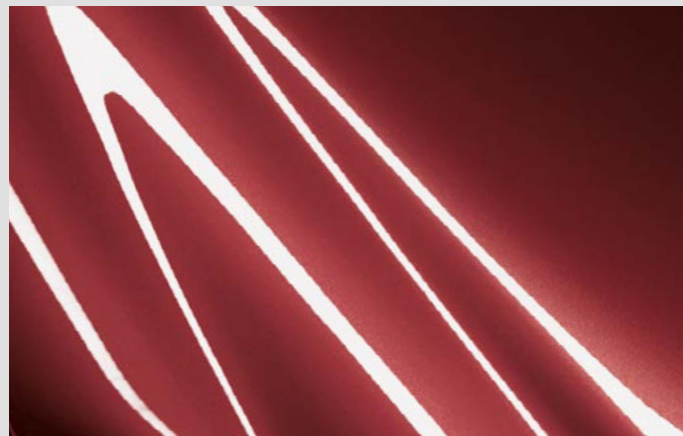
MOUNTAIN GREY METALLIC



MOJAVE SILVER METALLIC



PATAGONIA RED METALLIC



*designo*® MOUNTAIN GREY MAGNO



NA on CLA 250 with Bahia Brown interior

Matte finish

# WHEELS

● Standard ○ Optional ▲ No-charge option

18" MULTISPOKE



● CLA 250  
NA with AMG Line

18" 5-SPOKE



w/MATTE BLACK ACCENTS  
○ CLA 250  
NA with AMG Line

18" MULTISPOKE



w/BLACK ACCENTS  
○ CLA 250  
NA with AMG Line

19" TWIN 5-SPOKE



○ CLA 250  
NA with AMG Line

18" AMG® TWIN 5-SPOKE



SILVER  
○ CLA 250  
AMG Line

w/BLACK ACCENTS  
○ CLA 250  
Night Pkg

● AMG CLA 35

19" AMG MULTISPOKE



SILVER  
○ CLA 250  
Requires AMG Line

BLACK  
○ CLA 250  
Requires Night Pkg

19" AMG MULTISPOKE



w/BLACK ACCENTS  
○ AMG CLA 35

MATTE BLACK  
○ AMG CLA 35

19" AMG TWIN 5-SPOKE



w/BLACK ACCENTS  
○ AMG CLA 35

19" AMG TWIN 5-SPOKE



● AMG CLA 45  
NA w/AMG Night Pkg

18" AMG 10-SPOKE



▲ AMG CLA 45  
NA w/AMG Night Pkg

19" AMG TWIN 5-SPOKE



MATTE BLACK  
○ AMG CLA 45  
Requires AMG Night Pkg

19" AMG FORGED CROSS-SPOKE



SILVER  
○ AMG CLA 45  
NA w/AMG Night Pkg

MATTE BLACK  
○ AMG CLA 45  
Requires AMG Night Pkg



# OWNERSHIP & EXPERIENCE



## DAILY COMMUTE OR ROADTRIP, THOUGHTFUL TECHNOLOGY HELPS MAKE ANY JOURNEY A JOY.

*Mercedes me connect* puts a network of features in your car, on your smartphone, and in the digital world around you.<sup>2</sup> And all of them collaborate to help keep you on track, on time, and feeling you're on top of your real world.

- You can remote-start your car, locate where it's parked, configure vehicle settings from your phone, and more.
- You can look up destinations on your phone and send them to the available MB Navigation system in your car.
- You can offer WiFi to your passengers, and enjoy audio from all over the planet with TuneIn Radio.

Models with Car-to-X Communication can share info on traffic, road hazards and other conditions with each other, via a central reporting base. So you might find out about a tie-up on your route before you get caught up in it.

The map database for your car's available MB Navigation system can be updated in your driveway, over the air, up to twice a year—with no need to bring it to the dealership.

## WHEREVER YOU DRIVE, THERE'S A TEAM OF SUPPORTIVE PEOPLE LOOKING OUT FOR YOU.

Mercedes-Benz was the first automaker to introduce its own Roadside Assistance Program in the US. For more than 35 years, customers have called on—and counted on—factory-trained experts in times of need.<sup>25</sup>

- A button in your car can connect you. If an air bag or seat-belt tensioner is activated, your car can place the call on your behalf, and even transmit your location.
- They can send help—usually a trained dealer service technician—to your location, even for a jump-start.
- If you see a warning light, so can the experts, and they can often help diagnose trouble over the phone.

Your Mercedes-Benz dealer is helping make service and maintenance even more convenient, with options such as Express Service, Mobile Service, pickup and delivery, online scheduling, and contactless payment. Your dealer can tell you more about the specific benefits they offer.

## YOUR MERCEDES-BENZ EXPERIENCE SHOULD ALWAYS FEEL SPECIAL.

Driving a Mercedes-Benz feels like joining a club, as well as a family. Wherever you go, you're part of a history that started with the first car, and always keeps racing ahead.

- For decades, groundbreaking innovations have protected, entertained and indulged Mercedes-Benz drivers first. While many have gone on to become the standard for all cars, you get to drive the future, today.
- From the AMG Lounge to #MBPhotoPass on Instagram, Mercedes-Benz owners have many ways to connect and interact.

Your car and your dealer are in on it, too.

- Mercedes me lets your car communicate its service needs to your preferred dealer.
- Your dealer can reach out to you to book an appointment or offer drive-in service.

## COMMITTED TO COMMUNITY

Mercedes-Benz USA is committed to educating and empowering the next generation of diverse leaders.

To help equip them with the tools for success, MBUSA partners with two national organizations that invest in the futures of young people in communities across the country. As a Mercedes-Benz driver, you become a part of this effort to give hundreds of thousands of youth a better life today, and all of us a brighter tomorrow.

Learn more about how Mercedes-Benz USA gives back at [MBUSA.com/community](https://www.mbusa.com/community)



A nationwide network of youth sports programs, Laureus Sport for Good USA is focused on improving the health, education, employment and social cohesion of youth in underserved communities. Since 2012, Laureus USA has helped nearly half a million young people in 150 cities.

To learn more, visit [laureususa.com](https://www.laureususa.com)

## JOHNNY MAC SOLDIERS FUND

Johnny Mac Soldiers Fund helps honor military service and sacrifice by providing scholarships to veterans and military family members—particularly the children of our nation's fallen and disabled. Since 2014, Johnny Mac has awarded more than \$16 million in scholarships to some 2,000 students.

To learn more, visit [johnnymac.org](https://www.johnnymac.org)

# ENDNOTES

\* Item is optional or not available on some models. See *Build Your Own* in this brochure or visit MBUSA.com for more information.

- 1 Lower-aspect-ratio tires and accompanying wheels provide substantially increased treadwear, increased tire noise and reduced ride comfort. Serious wheel and tire damage may occur if the vehicle is operated on rough or damaged road surfaces or upon encountering road debris or obstacles. These tires are not designed for use on snow and ice. Winter tires mounted on appropriately sized and approved wheels are recommended for driving in those conditions.
- 2 All *Mercedes me* services operate only where cellular and GPS signals are available, which are provided by third parties and not within the control of Mercedes-Benz USA, LLC. *Mercedes me connect assist* services, and 3 years of *Mercedes me connect* services are included at no additional charge with new-vehicle sales and leases at an authorized Mercedes-Benz dealer. Models with MB Navigation also include 3 years of over-the-air map updates (up to twice per year), 3 years of live traffic information provided by HERE Technologies, and a 1-month trial (up to 1GB) of in-vehicle WiFi and streaming audio. Subscriber Agreement is required for service to be active. Some services are only available on select vehicles. Your PIN is required to use certain services. Connection may be limited by cellular signal and other factors. Features may be introduced and updated at varying dates, and may also require a vehicle software update. Some services may be limited or restricted in some areas. Driver is responsible for complying with traffic and other laws. The *Mercedes me connect* Mobile App is compatible with Apple iPhone® models and Android-based phones, and may require a software update. See your dealer or MBUSA.com/mercedesme for details.
- 3 Active Brake Assist may not be sufficient to avoid an accident. It does not react to certain stationary or suddenly moving objects or pedestrians, may not react in certain situations where objects cannot be clearly identified, nor does it recognize or predict the curvature and/or lane layout of the road or every movement of vehicles and pedestrians ahead. It is the driver's responsibility at all times to be attentive to traffic and road conditions, and to provide the steering, braking and other driving inputs necessary to retain control of the vehicle. Drivers are cautioned not to wait for the system's alerts before braking, as that may not afford sufficient time and distance to brake safely. See Operator's Manual for system operating speeds and additional information and warnings.
- 4 Blind Spot Assist is a warning system only. Blind Spot Assist or Active Blind Spot Assist may not be sufficient to avoid all accidents involving vehicles in your blind spot and does not estimate the speed of approaching vehicles. It must not be used as a substitute for driver awareness and checking of surrounding traffic conditions. Exit Warning Assist feature operates up to three minutes after vehicle is switched off, or until indicator in mirror flashes three times. See Operator's Manual for system's operating speeds and additional information and warnings.
- 5 Rearview camera and Surround View System do not audibly notify driver of nearby objects and are not a substitute for actively checking around the vehicle for any obstacles or people. Images displayed may be limited by camera field of view, weather, lighting conditions and the presence of dirt, ice or snow on the cameras.
- 6 Parking assistance systems are not substitutes for driver attention to the immediate surroundings, as well as any people, animals or vehicles in or approaching the vehicle's maneuvering range. System cannot determine if a space is legally available or of a suitable surface for parking. See Operator's Manual for additional information, tips and warnings.
- 7 Even the most advanced safety systems may not be sufficient to avoid an accident. Please refer to more detailed information on specific systems elsewhere in this brochure, at MBUSA.com, and in the vehicle's Operator's Manual. Some systems may be optional.
- 8 PRE-SAFE® closes the side windows when the system's sensors detect side movements that suggest a possible rollover or side impact. A small gap is left near the fully closed position. Audio/multimedia system must be turned on for PRE-SAFE Sound to operate. PRE-SAFE PLUS cannot prevent a collision, and does not alert the driver of an impending collision or system activation. It does not intervene if vehicle is backing up, and does not apply the brakes if the driver is accelerating or if Active Parking Assist is operating.
- 9 While the navigation system provides directional assistance, the driver must remain focused on safe driving behavior, including paying attention to traffic and street signs. The driver should utilize the system's audio cues while driving and should only consult the map or visual displays once the vehicle has been stopped in a safe place. Maps do not cover all areas or all routes within an area.
- 10 Apple CarPlay™ is a product of Apple Inc. Android Auto is a product of Google Inc. Device and app providers' terms and privacy statements apply. Requires connected compatible device and data plan. Apps, content and features are selected solely by their providers. Connection to apps and streaming services may be limited by the device's network connection. Data usage is routed through device and subject to fees, charges and restrictions in user's wireless plan. Vehicle's factory audio/information interface may not be used simultaneously with Apple CarPlay or Android Auto. When Apple CarPlay or Android Auto is in use, the steering-wheel voice control button accesses Siri® or Google voice recognition software for voice commands.

- 11 An adapter cable is required to connect a device with an earlier-generation USB port.
- 12 Display may not be visible with certain eyewear, including polarized glasses.
- 13 Sport steering wheel is excluded from AMG Line package if heated steering wheel is ordered.
- 14 Stated rates of acceleration are estimated based upon manufacturer's track results and may vary depending on model, environmental and road surface conditions, driving style, elevation and vehicle load.
- 15 Driving while drowsy or distracted is dangerous and must be avoided. ATTENTION ASSIST® is a warning system only. ATTENTION ASSIST and Active Lane Keeping Assist may be insufficient to alert a fatigued or distracted driver of lane drift and cannot be relied on to avoid an accident or serious injury. See Operator's Manual for system's operating speeds and additional information and warnings.
- 16 Unsecured cargo can become hazardous in a collision. Always secure cargo using the floor-mounted tie-downs.
- 17 Active Distance Assist DISTRONIC® cruise control is not a substitute for active driving involvement. It does not adapt cruising speed in response to stationary objects, nor does it predict the curvature and lane layout of the road ahead or the movement of vehicles ahead. Active Steering Assist requires driver to hold steering wheel and be ready to steer vehicle at any time. It may not recognize lane markings in some lighting, weather and road conditions. It is the driver's responsibility at all times to be attentive to traffic and road conditions, and to provide the steering, braking and other driving inputs necessary to retain control of the vehicle. Drivers are cautioned not to wait for the system's alerts before braking, as that may not afford sufficient time and distance to brake safely.
- 18 Drivers are cautioned not to wait for the system's alerts before braking, as that may not afford sufficient time and distance to brake safely. Braking effectiveness also depends on proper brake maintenance, and tire and road conditions. See Operator's Manual for system operating speeds and additional information and warnings.
- 19 Active Lane Change Assist is not a substitute for active driving involvement. It estimates but does not predict the curvature and lane layout of the road ahead or the movement of vehicles ahead. It is the driver's responsibility at all times to be attentive to traffic and road conditions, and to provide the driving inputs necessary to retain control of the vehicle. System may not detect some objects, obstacles or vehicles in the area into which the vehicle would move. See Operator's Manual for system operating speeds and additional information and warnings.
- 20 Driver is responsible for safely slowing and/or stopping vehicle at intersections, and for giving right-of-way to other drivers. System is not a substitute for driver awareness to posted speed limits and other conditions. Driver is responsible for safely operating vehicle in accordance with local traffic laws and driving conditions.
- 21 No system, regardless of how advanced, can overcome the laws of physics or correct careless driving. Please always wear your seat belt. Driver's deliberate steering inputs are required to initiate the system's action, and can override its intervention at any time. See Operator's Manual for system operating speeds and additional information and warnings.
- 22 Obey local speed and traffic laws.
- 23 The purchase of a new, SiriusXM®-equipped vehicle includes a 6-month introductory subscription to the SiriusXM All Access package. Eligible pre-owned vehicles equipped with SiriusXM will receive a 3-month trial subscription to SiriusXM All Access package. Trial length and service availability may vary by model, model year or trim. If you decide to continue your subscription after your trial, the plan you choose will automatically renew and you will be charged according to your chosen payment method at then-current rates. Fees and taxes apply. To cancel you must call SiriusXM at 1-866-635-2349. See SiriusXM Customer Agreement for complete terms at siriusxm.com. All fees and programming subject to change.
- 24 Wireless charging and NFC pairing available only for devices with compatible technology and size. See Operator's Manual for more information. Devices sold separately.
- 25 Roadside Assistance repairs may involve charges for parts, service and towing. Vehicle must be accessible from main roads. Depending on the circumstance, these services may be provided by an outside provider, courtesy of Mercedes-Benz Roadside Assistance. Restricted roadways, acts of nature and vehicle accessibility may limit our ability to provide services to you. For full details, eligibility requirements, and limitations/exclusions of Sign and Drive services, as well as the Roadside Assistance Program, please see your dealer.

# VISIT, FOLLOW & WATCH



[facebook.com/mercedesbenzusa](https://facebook.com/mercedesbenzusa)



[linkedin.com/company/mercedes-benz-usa](https://linkedin.com/company/mercedes-benz-usa)



[instagram.com/mercedesbenzusa](https://instagram.com/mercedesbenzusa)



[twitter.com/MercedesBenzUSA](https://twitter.com/MercedesBenzUSA)



[youtube.com/mbusa](https://youtube.com/mbusa)