



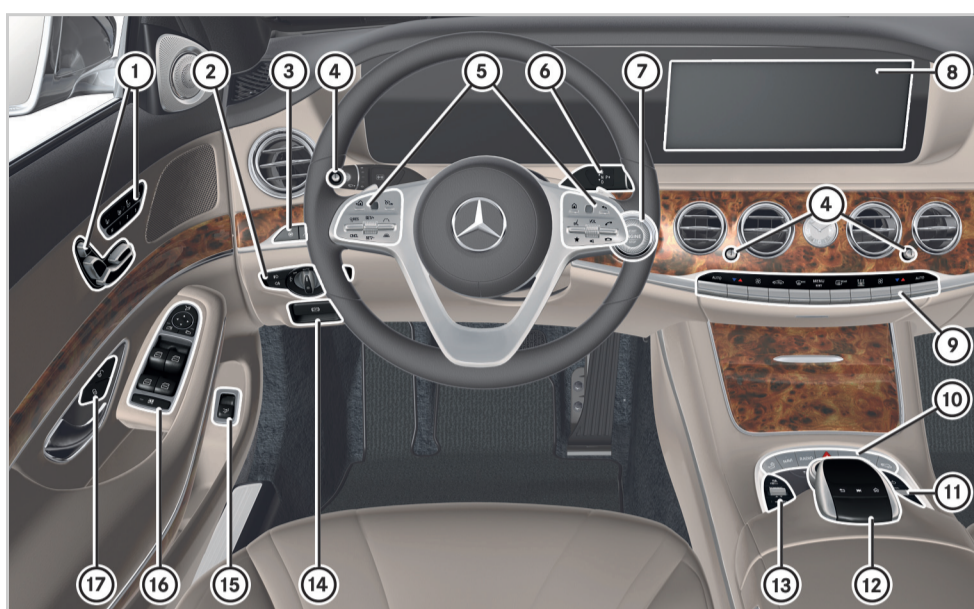
S-Class

Brief overview

Mercedes-Benz



Cockpit – overview



- ① **Seat functions**
Adjusts the seat electrically
 - Seat heating
 - Seat ventilation
 - Adjusts the front-passenger seat
 - Memory function and presets
1 2 3
- ② Light switch
Adjusts the instrument lighting
- ③ **Driver assistance systems**
 - Active Steering Assist
 - Active Lane Keeping Assist
 - Night View Assist
 - Head-up display
 - Rear window roller sunblind
- ④ Adjusts the air vents:
open or closed
- ⑤ Multifunction steering wheel control panels
- ⑥ DIRECT SELECT lever for transmission position

⚠ WARNING Make sure that you read the entire Operator's Manual. Otherwise, you may not recognize dangers.

Cockpit – overview

- ⑦ Start/Stop button
- ⑧ Multimedia system display
- ⑨ Buttons for automatic climate control
- ⑩ **Multimedia system controller with**
 - Seats menu
 - NAVI Navigation menu
 - RADIO Radio menu
 - MEDIA Media menu
 - TEL Telephone menu
 - Vehicle menu
 - Back button
 - Shows main functions
- ⑪ Switches multimedia system on or off
 - Adjusts the volume
Press: switches the sound on or off
 - Lowers or raises the head restraints in the rear compartment
 - Deactivates PARKTRONIC

- ⑫ Multimedia system touchpad
- ⑬ **Driving functions**
 - ECO start/stop function
 - DYNAMIC SELECT
 - Vehicle level
 - Active Parking Assist
 - Electric parking brake
 - Opens or closes the trunk lid
- ⑭ Door control panel with controls for power windows, exterior mirror settings and the override feature for power windows and roller sunblinds for the side windows in the rear
- ⑮ **Door handle**
 - Locks the vehicle centrally
 - Unlocks the vehicle centrally



Overhead control panel

- ① Buttons for interior lighting and reading light
- ② Button for Mercedes me connect*
- ③ SOS button* (Mercedes-Benz emergency call system)
- ④ Panoramic roof
Front roller sunblind
- ⑤ MAGIC SKY CONTROL or
Rear roller sunblind

* Not available in all countries

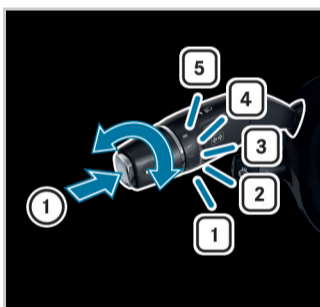
Note that your vehicle may not be fitted with all features described.

Lever on the steering wheel



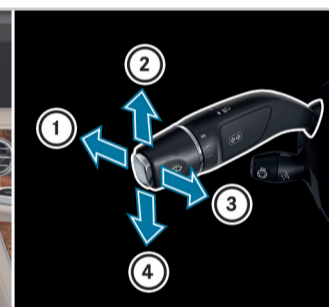
Overview

- ① Combination switch for turn signals, high-beam headlamps and windshield wipers
- ② Lever for electrical steering column adjustment and steering wheel heating



Combination switch – windshield wiper functions

- ① Single wipe
- Wipes with washer fluid
- ① Windshield wipers off
- ② Intermittent wiping, normal
- ③ Intermittent wiping, frequent
- ④ Continuous wiping, slow
- ⑤ Continuous wiping, fast

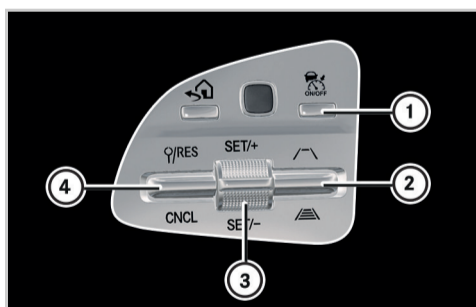


Combination switch – lighting functions

- ① High-beam headlamps or Adaptive Highbeam Assist Plus
- ② Turn signal, right
- ③ Headlamp flasher
- ④ Turn signal, left

⚠ WARNING Make sure that you read the entire Operator's Manual. Otherwise, you may not recognize dangers.

Active Distance Assistant DISTRONIC



Activating/deactivating

- ① Switches Active Distance Assist DISTRONIC on or off
- ③ Activates Active Distance Assist DISTRONIC with the current speed
- ④ Activates with the stored speed/pulls away with Active Distance Assist DISTRONIC
- Deactivates Active Distance Assist DISTRONIC



Changing the speed/distance

- ② Increases the specified minimum distance
- Reduces the specified minimum distance
- ③ Increases the speed
- Reduces the speed

Active Distance Assist DISTRONIC maintains a constant speed which has been stored. The lowest speed that can be set is 12 mph (20 km/h).

You can change the set speed:

- ▶ **1 mph step (1 km/h):** Briefly press rocker switch ③ up or down.
- ▶ **5 mph step (10 km/h):** Press rocker switch ③ up or down beyond the pressure point.

Using rocker switch ②, you can change the specified minimum distance to the vehicle in front. The specified minimum distance depends on the currently driven speed.

If rocker switch ④ is pressed upwards twice, Distance Assist DISTRONIC is activated with the speed restriction displayed in the instrument cluster.

Note that your vehicle may not be fitted with all features described.

Climate control



Operating possibilities for climate control

You can set automatic climate control using:

- The climate control menu of the multimedia system
- The climate control menu of the multimedia system

Air-conditioning function bar ② shows the most important settings and the status of automatic climate control.

Automatic climate control panel

- Sets climate control to automatic mode
- Sets the temperature
- Sets the airflow
At level 0: climate control off
- Air-recirculation mode
The air in the vehicle interior is recirculated.
In air-recirculation mode, the windows can fog up more quickly.
- Defrosts the windshield
- Calls up the climate control menu
If you press and hold the **MENU** button for approximately 4 seconds, automatic climate control is reset to the basic settings.
- Defrosts the rear window
- Cooling with air dehumidification
Residual heat with the engine off

Climate control menu of the multimedia system

▶ **To call up the climate control menu:** press the **MENU** rocker switch on the control panel up or down.

- **A/C** – Activates/deactivates the cooling and air dehumidification functions of the automatic climate control
- **Climate Mode** – Changes the air flow
- **Air Distribution** – Sets the air distribution for the driver and front passenger
- **Footwell Temperature** – Adjusts the temperature for the footwell separately
- **Rear** – Operates the automatic climate control in the rear
- **SYNC** – Changes settings for all climate zones in the vehicle simultaneously
- **Ionization** – Ionizes the air in the vehicle interior using ionization
- **Air Freshener** – Sets the intensity of the perfume atomizer





Operating the menu of the on-board computer

- ① Back button for the on-board computer
- ② Touch Control for the on-board computer

Operating the multimedia system

- ③ Main menu of the multimedia system
- ④ Touch Control for the multimedia system
- ⑤ Back button for the multimedia system
- ⑥ Accepts a telephone call
 Rejects a telephone call
 Ends a call

- ⑦ Adjusts the volume
Press: switches the sound on or off
- ⑧ Starts dialog with the Voice Control System or cancels the current Voice Control System voice command
- Displays favorites

WARNING Make sure that you read the entire Operator's Manual. Otherwise, you may not recognize dangers.

Voice Control System

Starting a dialog

The Voice Control System allows you to comfortably operate the majority of the multimedia system's functions.

▶ **To say a voice command:** press the button and speak a voice command after the signal tone.

Voice Control System help functions

- **General information:**
Say the "Help Voice Control System" voice command.
- **Help for the current function:**
Say the "Help" voice command.
- **Help for a specific system:**
Say the voice command for the desired system, e.g. "Help telephone".

Examples

Voice commands for Navigation

- "Navigate to Woodward Avenue, Detroit"
Starts route guidance to the named address.
- "Navigate to John Doe"
Starts route guidance to a contact in the address book.
- "Nearest gas station"
Further categories are also available: restaurant, car park and rest area.

Voice commands for telephone

- "Call Jane Doe"
Calls the number of a contact in the address book.
- "Latest calls"
Shows the latest calls.

Voice commands for audio mode

- "Station Z100"
Calls up stations which are in range or stored stations.
- "Play Moonlight Sonata"
Plays the named media file. All tracks available in the system can be used.

Note that your vehicle may not be fitted with all features described.

Overview of the multimedia system



You can operate the multimedia system with the controller, touchpad or Touch Control.

- ▶ **Controller:** turn or slide in the direction of the desired entry.
- ▶ Slide to the left or right in order to open a menu.
- ▶ Confirm your choice by pressing the controller.

- ▶ **Touchpad:** swipe in the direction of the desired entry.
- ▶ Swipe to the left or right in order to open a menu.
- ▶ Confirm your selection by pressing.

- Press briefly: returns to the previous display
Press and hold: calls up main functions
- Calls up main functions
- Rapid access to audio sources

Favorites

Favorites allow you to quickly call up applications which you use regularly.

- ▶ **To call up the menu:** press the button. The main functions are displayed.
- ▶ Navigate downwards. The favorites bar is shown.
- ▶ **To create your own favorite:** select the desired function in the multimedia system.
- ▶ Press and hold the button until the favorites are displayed.
- ▶ Add your own favorite at the desired position.

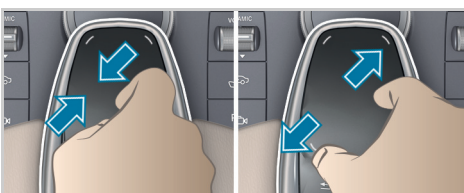
Personalization

You can store your own personal settings for the multimedia system in a user profile.

- ▶ **To call up the menu:** press the button.
- ▶ Select System Personalization.

WARNING Make sure that you read the entire Operator's Manual. Otherwise, you may not recognize dangers.

Operating the multimedia system

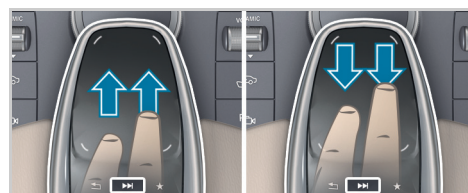


Zooming the map

- ▶ **Touchpad:** move two fingers together or apart.



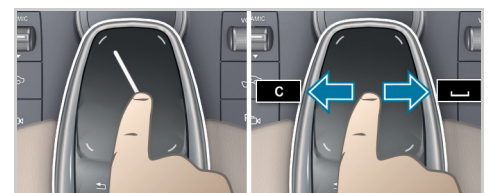
- ▶ **Controller:** turn left or right.



Rapid access to audio sources

Depending on the audio source to which you are currently listening, you can move to the next radio station or music track.

- ▶ **To open the access bar:** swipe up with two fingers.
- or
- ▶ Press the button on the touchpad.
- ▶ **To select the previous or next station/music track:** use one finger to swipe up or down.
- ▶ **To close the access bar:** swipe down with two fingers or press on the touchpad.



Handwriting recognition

You can enter individual characters.

- ▶ **To delete** : swipe to the left.
- ▶ **To insert a space** : swipe to the right.

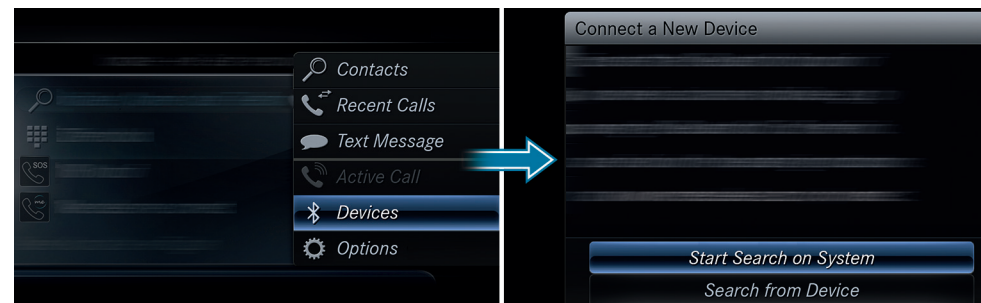
Quickly storing radio stations

If you are listening to the radio and the Radio menu is shown in the multimedia system:

- ▶ Press and hold the controller or touchpad or the right-hand Touch Control on the multifunction steering wheel. A tone confirms the save.

Note that your vehicle may not be fitted with all features described.

Establishing a Bluetooth® connection



Requirement

- Bluetooth® is switched on on the mobile phone and visible for other devices (see the manufacturer's operating instructions).
- Bluetooth® is switched on on the multimedia system.

Searching for a mobile phone

- ▶ Press the button on the center console.
- ▶ Select **Devices** **Connect a New Device**.
- or
- ▶ Select **Start Search on System**. The available devices are shown in the display. If your mobile phone is not found, select **Search from Device**.

Connecting a mobile phone

- ▶ Select the desired mobile phone. A code is displayed in the multimedia system and on the mobile phone.
- ▶ **If the codes match:** Confirm with **Yes** on the multimedia system.
- ▶ Confirm the code on the mobile phone.
- ▶ You can simultaneously connect two telephones with your system.

Further information

Detailed information on Bluetooth® connections with your mobile phone can be found at:

<https://www.mercedes-benz.com/connect>



WARNING Make sure that you read the entire Operator's Manual. Otherwise, you may not recognize dangers.

Further information on your vehicle



Connecting external media sources

- ① SD card slot
- ② USB ports

The USB connection for Apple CarPlay™ and Android Auto™ is marked with the symbol.



HANDS-FREE ACCESS

If you carry the KEYLESS-GO key on your person, you will be detected by a sensor. Do not touch the bumper and maintain a distance of around 12 in (30 cm).

- ▶ **To open or close:** kick into the sensor detection area below the bumper.

Further information

Obtain further information on your vehicle from:

<https://www.mbusa.com>



How-to videos



Operator's Manuals

Note that your vehicle may not be fitted with all features described.