

# 2021 GLS





# 2021 GLS

05

KEY FEATURES

06

MODEL OVERVIEW

11

PACKAGES

12

SUV

16

AMG SUV

20

BUILD YOUR OWN

25

OWNERSHIP





# PINNACLE OF DEPTH



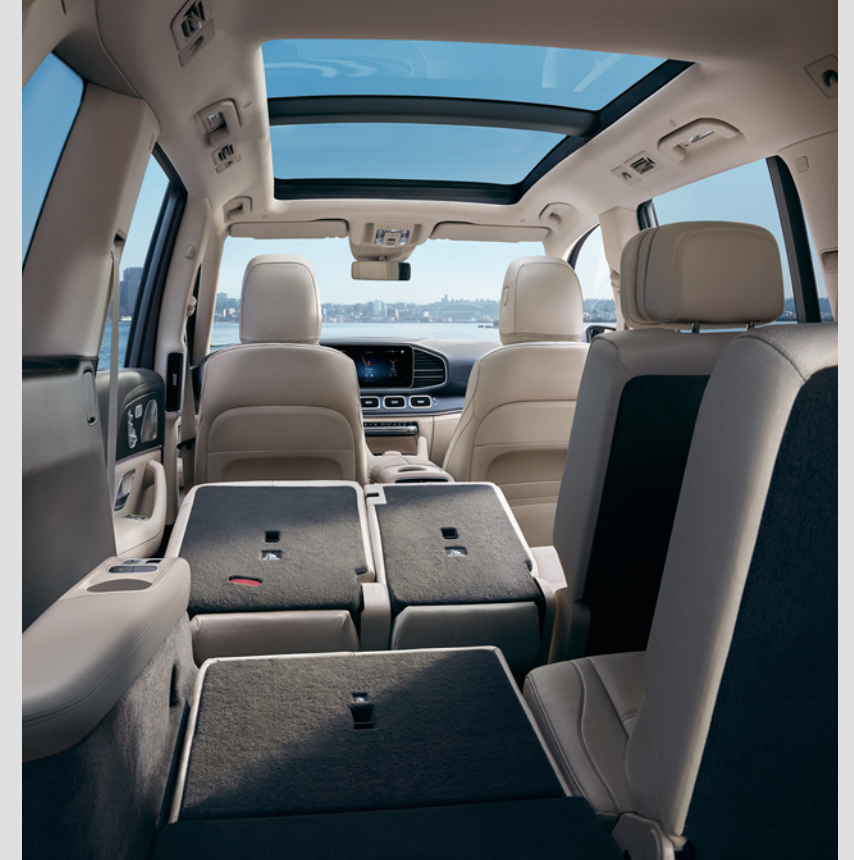
Standard and available equipment may vary by model. Please see back of brochure.





# THE 2021 GLS

There are three-row SUVs that are larger, but not nearly as accommodating. Costlier SUVs that are far less thoughtful. And SUVs with bigger engines that can't keep pace. That's because the GLS is born from Mercedes-Benz ingenuity, not a pickup truck. Appointed so luxury takes a back seat to no one, even in its rearmost row. And thrust ahead by turbo and electric boost. How do you achieve peak SUV? Think deeper.





# KEY FEATURES



The GLS takes its family values from the iconically capable G-Class SUV and the indulgent, innovative S-Class sedan. That's why it places such high value on looking after – and looking out for – your family.

## LUXURY 08

Burmester® surround sound or 3D surround sound\*  
 Power, heated, ventilated and massaging\* front seats w/memory; power-folding 50/50 3rd row  
 Power-adjustable 40/20/40-split 2nd row (or twin captain's chairs); Executive Rear Seat Package PLUS\*  
 4-zone or 5-zone\* climate control; soft-close doors\*  
 64-color LED ambient lighting, illuminated door sills; up to 8 choices\* in interior trim, including 5 woods



## CAPABILITY 09

Engines: Inline-6 turbo, V8 biturbo or AMG V8 biturbo, all w/EQ Boost Integrated Starter-Generator (ISG)  
 20"-23"\* alloy wheels!; DYNAMIC SELECT drive modes  
 4MATIC® all-wheel drive w/fully variable torque split  
 AIRMATIC® adaptive, height-adjustable suspension; E-ACTIVE BODY CONTROL (GLS 580\*); or AMG ACTIVE RIDE CONTROL w/roll stabilization\*  
 84.7 cu ft max cargo space; 7,700 lbs max towing<sup>2</sup>



## SAFETY 10

Intelligent Drive\* driver assistance suite, including Active Distance Assist DISTRONIC®, Active Brake Assist w/Cross-Traffic Function, Active Lane Change and Speed Limit Assists, PRE-SAFE® PLUS, Active Stop-and-Go Assist, Route-based Speed Adaptation  
 Surround View System, Blind Spot Assist w/Exit Warning, and PARKTRONIC w/Active Parking Assist  
 Antitheft alarm w/Parking Damage Detector



## TECHNOLOGY 10

12.3" digital instrument cluster, 12.3" multimedia touchscreen, steering-wheel Touch Control Buttons  
 Mercedes-Benz User Experience (MBUX) w/"Hey, Mercedes" voice assistant; MBUX gesture control\*  
 Apple CarPlay™ and Android Auto; wireless phone charging; SiriusXM® 6-month All Access trial  
 Mercedes me connect featuring smartphone app with Remote Start, 4G LTE WiFi,\* and more<sup>3</sup>



\*Optional or not available on some models. Please see endnotes at back of brochure.





### STRONGEST CHARACTER IN A LEADING ROLE

It's no surprise that the largest SUV in the Mercedes-Benz family is also the most spacious and capacious. What sets it apart from the largest SUVs from other families is nearly impossible to sum up: The flexibility of seating for six or seven, with power seating in the first two rows, and a power-folding third. The versatility of air suspension and all-wheel drive that can apportion power to the wheels with the most usable traction. The usefulness of its luxuries, like heated and ventilated front seats, 64-color ambient lighting, surround sound that also helps carry conversation from row to row, and even a one-touch mode for automatic carwashes.

And its responsiveness, whether it's turbo torque with an electric boost, unexpectedly agile handling, or the lifelike voice assistant that turns your talk into your car's action. If this sounds like an impressive menu of options, here are two more surprises: Some of these aren't available on competitors' SUVs at any cost. And none of it is extra-cost on any 2021 GLS. It's all standard, along with the leadership in safety and style you expect in a Mercedes-Benz—inventor of the car, pioneer of the all-wheel-drive vehicle, and holder of well over 100,000 patents. Even in the largest SUV, the measure that matters most is still its strength of character.



### MODELS

GLS 450 4MATIC SUV  
362-hp inline-6 turbo w/EQ Boost,  
4MATIC® fully variable all-wheel drive,  
self-leveling AIRMATIC® suspension

GLS 580 4MATIC SUV  
483-hp V8 biturbo w/EQ Boost,  
4MATIC fully variable all-wheel drive,  
self-leveling AIRMATIC suspension

AMG GLS 63 SUV  
Handcrafted AMG 603-hp V8 biturbo  
w/EQ Boost, AMG Performance  
4MATIC+ fully variable all-wheel drive,  
AMG ACTIVE RIDE CONTROL w/roll  
stabilization



21









**ROWS TO THE OCCASION**

Most large SUVs treat the cabin like it's an airliner—dividing passengers into three classes of seating. In a GLS, all three rows feel like they're in front of that little curtain. There's room to stretch your legs, and no need to stretch for a USB-C port, wherever you sit. Amenities include four or five climate zones. The 2nd-row seats are power-adjustable, configured for

three adults with dual power EASY-ENTRY 3rd-row access, or as twin seats with a walk-through plus a curbside power EASY-ENTRY. Executive seating\* can add ventilation and massage to the V8 7-seaters. Options like acoustic glass, a Panorama roof, cabin aromatherapy, and 2nd- and 3rd-row heated seats offer your senses a sense of occasion in every row.

**LUXURY HIGHLIGHTS**

Heated, ventilated and massaging\* front seats; heated, ventilated and massaging 2nd-row seats\*; heated 3rd-row seats\*  
 64-color LED ambient lighting, illuminated front door sills  
 4-zone or 5-zone\* climate control with dust/pollen and activated-charcoal odor filters; Air Balance cabin-air ionizer and fragrance\*

Heated and/or wood/leather steering wheel\*; heated front and 2nd-row armrests\*  
 Heated/cooled cupholders,\*  
 Burmester® Surround Sound or High-End 3D Surround Sound\*  
 Power glass sunroof, or Panorama roof\*; power 2nd-row sunshades\*; soft-close doors\*

\*Optional or not available on some models. Please see endnotes at back of brochure.





**TEAM SPIRITED**

One-trick ponies have never been a Mercedes-Benz thing—especially its flagship SUV. Towing a trailer of ponies, sure, but a GLS is equally confident taking on curvy roads or rough terrain, going out on the town or trekking cross-country. Advanced 48-volt electrical architecture—four times the usual volts—powers its EQ Boost electric torque assist, efficiently drives its

powerful climate control, and makes its fast-acting active suspensions\* possible. Its height-adjustable, independent AIRMATIC® suspension gives it serious off-road<sup>5</sup> chops, and a distinctly non-choppy ride in its chair-height third row. What’s the trick to making a solid SUV so spirited? It takes genuine innovation and rigorous engineering. It only feels like magic.

**CAPABILITY HIGHLIGHTS**

Inline-6 turbo, V8 biturbo, or AMG V8 biturbo, all w/electric EQ Boost

9G-TRONIC or AMG SPEEDSHIFT® TCT 9-speed automatic transmission

Self-leveling, height-adjustable suspensions: adaptive AIRMATIC®, camera-based E-ACTIVE BODY CONTROL (GLS 580\*), or AMG ACTIVE RIDE CONTROL w/roll stabilization (GLS 63)

4MATIC® all-wheel drive or AMG Performance 4MATIC+ w/fully variable front/rear torque

Up to 7,700 lbs of towing capacity,\* standard Trailer Stability Assist<sup>2</sup>

Off-Road Package<sup>5</sup> (GLS 580\*)

Up to 84.7 cu ft of cargo space<sup>4</sup>

KEYLESS-GO® and hands-free power liftgate



\*Optional or not available on some models. Please see endnotes at back of brochure.



# 21

Groundbreaking innovation defines a deep tradition of passenger protection and driver convenience. Virtual eyes look out for your well-being, while a virtual cabin assistant listens and responds to your natural voice.



### FORTITUDE WITH FORESIGHT

Radar- and camera-based systems offer virtual vigilance beyond human capability. They can watch ahead and to the sides to help prevent collisions, or act to pre-trigger your ears' natural defenses if a crash seems imminent. They can offer a birdseye view of your surroundings, help you park hands-free, and alert you if it's not ok to open a door before you exit. A package of driver assists can adjust your cruise speed when the limit changes or you approach a tollbooth, help keep you from turning across oncoming traffic, let you change lanes with the tap of a turn signal, and even make traffic jams less stressful. All wrapped in a high-strength, highly advanced body.

### SAFETY HIGHLIGHTS

Radar-based Active Brake Assist frontal collision mitigation<sup>6</sup>; PRE-SAFE<sup>®</sup> w/hearing protection technology<sup>7</sup>

Blind Spot Assist w/Exit Warning Assist<sup>8</sup>; PARKTRONIC w/Active Parking Assist<sup>9</sup>; and multicamera Surround View System<sup>10</sup>

Driver Assistance Package PLUS,<sup>11</sup> including Active Distance Assist DISTRONIC<sup>®</sup> cruise control; Active Steering Assist; Route-based Speed Adaptation; Evasive Steering Assist; Active Brake Assist w/Cross-Traffic Function; PRE-SAFE PLUS rear-impact prep; and Active Blind Spot, Emergency Stop, Lane Change, Lane Keeping, Speed Limit, and Stop-and-Go Assists

### HIGH TECH WITH A HUMAN TOUCH

Artificial intelligence lets you interact with the GLS more like a real person, for real convenience. By saying "Hey, Mercedes" you can operate cabin features with everyday language like "I'm warm" to turn down the heat, or "we're getting hungry" for a navigation search. Augmented video can then show each turn, overlaid with guiding graphics, on the 12.3" central display. It's also a multimedia touchscreen, set alongside a 12.3" reconfigurable instrument display. Multitouch interfaces on the steering wheel and console let you operate features without having to talk. And gesture control\* can respond without even touching. It's not just easy to use from the get-go, it can also get better with time by learning your preferences as well.

### TECHNOLOGY HIGHLIGHTS

Mercedes-Benz User Experience (MBUX) with natural voice assistant, touchscreen, console touchpad, and steering-wheel Touch Controls

Dual 12.3" displays: reconfigurable digital instrument cluster, multimedia touchscreen

MBUX Interior Assistant (gesture control)\*

MB Navigation<sup>12</sup> w/augmented video\* using live imagery of surroundings

Apple CarPlay<sup>™</sup> and Android Auto<sup>13</sup>; SiriusXM 6-month All Access trial<sup>14</sup>; Head-Up Display\*<sup>15</sup>

Nine USB-C ports<sup>16</sup>; wireless charging

LED Intelligent Light System w/Ultra Wide Highbeams and Adaptive Highbeam Assist



\*Optional or not available on some models. Please see endnotes at back of brochure.



# OPTION PACKAGES

Even with an abundance of standard features, a menu of enticing options and packages lets you create a GLS that's a perfect fit for the way you drive, and the way your family lives.

## DRIVER ASSISTANCE PACKAGE PLUS

(Standard on GLS 63)

- Active Distance Assist DISTRONIC® cruise control
- Active Steering Assist
- Evasive Steering Assist
- Active Brake Assist w/Cross-Traffic Function
- PRE-SAFE® PLUS rear impact preparation
- Route-based Speed Adaptation
- Active Blind Spot, Emergency Stop, Lane Change, Lane Keeping, Speed Limit and Stop-and-Go Assists



## EXECUTIVE REAR SEAT PACKAGES

Executive Rear Seat Package (available on GLS 63 7-seater):

- 2nd-row wireless charging
- 2nd-row MBUX tablet (removable, docks in armrest)
- Outboard 2nd-row comfort head restraints

Executive Rear Seat Package PLUS

(available on GLS 580 and GLS 63 7-seaters) adds:

- Heated, ventilated and multicontour outboard 2nd-row seats with massage
- Heated and cooled 2nd-row cupholder



## E-ACTIVE BODY CONTROL PACKAGE

(Available on GLS 580)

- Underguard
- E-ACTIVE BODY CONTROL with road-scanning camera and curve tilting function



GLS SUV

*A SEAT AT THE  
FOREFRONT*

GLS 450 4MATIC / GLS 580 4MATIC

*WHEREVER  
YOU TAKE IT*







## GLS 580 4MATIC

/483-HP V8 BITURBO  
w/ELECTRIC EQ BOOST  
/4MATIC® ALL-WHEEL DRIVE

/SELENITE GREY  
/23" AMG® TWIN 5-SPOKE WHEELS¹  
/ILLUMINATED RUNNING BOARDS



# GLS 580 4MATIC SPECIFICATIONS

**/ ENGINE** 4.0L V8 biturbo w/

electric EQ Boost **/ POWER** 483 hp

(gas engine) @ 5,500 rpm **/ 0-60**

**MPH** → 5.2 sec<sup>17</sup> **/ DRIVE** 4MATIC<sup>®</sup>

fully variable all-wheel **/ WHEELS**

21" AMG<sup>®</sup> twin 5-spoke<sup>1</sup>



SUV  
SUV  
**SUV**  
SUV  
SUV



The GLS is designed not just to be larger, but greater. So it goes to great lengths to be genuinely rewarding wherever you take your seat, and wherever you take your GLS. Each of its three seating rows offers appealing benefits: chairlike comfort in the third row, power seats in a variety of layouts in the middle row, and heated and ventilated seats up front, all standard. The powerful climate control has four or five\* zones, and filters for dust, pollen and even odors. Add an ionizer\* for even fresher air, and it can subtly infuse a hint of fragrance as well. Front and middle seats can offer a “hot

stone” massage,\* and even the third row can be heated.\* If you’re the lucky occupant of the driver seat, the benefits might surprise you even more. Thanks to its adaptive air suspension, turbo- and electric-boosted acceleration, fully variable 4MATIC® all-wheel drive, and the driving passion of Mercedes-Benz engineers, a GLS isn’t merely capable and confident off-road. It’s uncannily agile on-road, negotiating twisty roads and tight cities with the gracefulness to make you rejoice while your passengers relax. If there’s a place and time for everything, a GLS helps make both special.

**INLINE-6 TURBO OR V8 BITURBO WITH EQ BOOST ELECTRIC ASSIST. SEATING FOR 6 OR 7 PASSENGERS. UP TO 84.7 CU FT OF CARGO SPACE.<sup>4</sup> LED HEADLAMPS AND TAILLAMPS. 64-COLOR LED AMBIENT LIGHTING. BLIND SPOT ASSIST, AND HANDS-FREE ACTIVE PARKING ASSIST. 20" OR 21" WHEELS<sup>1</sup> (OPTIONS TO 23"). DUAL 12.3" DIGITAL DISPLAYS, WITH CENTRAL MULTIMEDIA TOUCHSCREEN. MBUX WITH MB NAVIGATION.<sup>12</sup>**

\*Optional or not available on some models. Please see endnotes at back of brochure.

SUV  
SUV



AMG GLS SUV

**AMG**

DRIVING PERFORMANCE

*FINALLY, A  
SPORTS CAR*

AMG GLS 63

*FOR 3RD-ROW  
SEAT DRIVERS*





**AMG**

DRIVING PERFORMANCE



**AMG GLS 63**

/ HANDCRAFTED 603-HP AMG  
V8 BITURBO w/EQ BOOST  
/ AMG PERFORMANCE 4MATIC+

/ *designo* DIAMOND WHITE  
/ 23" AMG® FORGED-ALLOY WHEELS<sup>1</sup>  
/ AMG NIGHT PACKAGE



# AMG GLS 63 SPECIFICATIONS

**/ENGINE** Handcrafted AMG 4.0L

V8 biturbo w/electric EQ Boost

**/POWER** 603 hp @ 5,750 rpm

**/0-60 MPH** → 4.1 sec<sup>17</sup> **/DRIVE**

AMG Performance 4MATIC+

**/WHEELS**<sup>1</sup> 21" AMG<sup>®</sup> 10-spoke





“Faster, daddy” is not a sound argument for driving a 7-seat SUV powered by a handcrafted biturbo V8 that can output 603 hp without counting what its electric boost can fill in. However, the AMG GLS 63 does get better fuel economy<sup>18</sup> than many two-seat supercars, and they can’t carry 85 cu ft of racing helmets<sup>4</sup> or six of your friends in lush, law-abiding luxury. AMG Performance 4MATIC+ all-wheel drive and an electronically controlled limited-slip rear differential team up for precise footwork, whether responsibly merging from 0 to 60 in 4.1 seconds<sup>17</sup> or negotiating a challenging curve.

For a more serene ride, AMG ACTIVE RIDE CONTROL can actively counteract body roll and pitch—helping to keep an even keel whether driving fully laden or enjoying a solo romp. The AMG DRIVE UNIT lets you dial in the suspension, drive mode and more, directly from the steering wheel. You can even tone down the exhaust note as you tiptoe into your cul-de-sac. Richly crafted luxury, an abundance of flexible space, and a suite of industry-advancing driver assistance and safety systems—all standard—make a GLS 63 a totally rational choice. The sports car hidden inside is a bonus.

HANDCRAFTED AMG V8 BITURBO  
w/ELECTRIC EQ BOOST AND  
DYNAMIC ENGINE MOUNTS.  
AMG SPEEDSHIFT® TCT 9-SPEED.  
AMG PERFORMANCE 4MATIC+ AWD,  
ELECTRONIC LIMITED-SLIP REAR DIFF.  
AMG DYNAMIC SELECT DRIVE MODES,  
AMG DRIVE UNIT.  
AMG PERFORMANCE EXHAUST.  
AMG ACTIVE RIDE CONTROL  
SUSPENSION w/ROLL STABILIZATION.  
21" (OPTIONS TO 23") AMG® WHEELS!  
EXCLUSIVE NAPPA LEATHER SEATING.

AMG  
AMG  
AMG  
AMG  
AMG



AMG  
AMG



# BUILD YOUR OWN

● Standard ○ Optional ▲ No-charge option — Not available

SPECIFICATIONS		GLS450 4MATIC SUV	GLS580 4MATIC SUV	AMG GLS 63 SUV
Engine	Type	3.0L inline-6 turbo w/Direct Injection and EQ Boost	4.0L V8 biturbo w/Direct Injection and EQ Boost	Handcrafted AMG 4.0L V8 biturbo w/Direct Injection and EQ Boost
	Power (gas only)	362 hp @ 5,500–6,100 rpm	483 hp @ 5,500 rpm	603 hp @ 5,750–6,500 rpm
	Torque (gas only)	369 lb-ft @ 1,600–4,500 rpm	516 lb-ft @ 2,000–4,000 rpm	627 lb-ft @ 2,500–4,500 rpm
Automatic transmission		9G-TRONIC 9-speed w/shift paddles	9G-TRONIC 9-speed w/shift paddles	AMG SPEEDSHIFT® TCT 9-speed w/shift paddles
Acceleration, 0–60 mph <sup>17</sup>		5.9 sec	5.2 sec	4.1 sec
Wheels <sup>1</sup>		20" 8-spoke	21" AMG® twin 5-spoke	21" AMG 10-spoke
Suspension		AIRMATIC w/Adaptive Damping System (ADS), 4-wheel level control, and driver-selectable or speed/mode-based ride height		AMG ACTIVE RIDE CONTROL w/roll stabilization, 4-wheel level control, and driver-selectable or speed/mode-based ride height
Drivetrain		4MATIC® fully variable all-wheel drive	4MATIC fully variable all-wheel drive	Fully variable AMG Performance 4MATIC+ all-wheel drive

## KEY STANDARD FEATURES

### GLS450 GLS580 AMG GLS 63 PERFORMANCE AND EFFICIENCY

- ● ● EQ Boost Integrated Starter-Generator (ISG)
- ● ● ECO Start/Stop system
- ● ● DYNAMIC SELECT *AMG DYNAMIC SELECT on GLS 63*
- ● — 4MATIC all-wheel drive w/fully variable front/rear torque distribution
- — ● AMG Performance 4MATIC+ all-wheel drive w/fully variable torque
- — ● Electronically limited-slip rear differential
- — ● AMG Performance Exhaust System
- — ● AMG DRIVE UNIT performance controls on steering wheel
- — ● AMG Track Pace

### SAFETY AND SECURITY

- ● ● Active Brake Assist<sup>4</sup> radar-based forward collision mitigation
- ● ● ATTENTION ASSIST<sup>19</sup>
- ● ● Car-to-X Communication<sup>20</sup>
- ● ● PRE-SAFE® w/PRE-SAFE Sound hearing protection technology<sup>7</sup>
- ○ ● PRE-SAFE PLUS rear collision detection/preparation<sup>7</sup>
- ● ● Electronic Stability Program (ESP®)
- ● ● Adaptive braking technology: Predictive Brake Priming, Automatic Brake Drying, Hill-Start Assist, brake HOLD feature
- ● ● Emergency-sensing Brake Assist (BAS®)
- ● ● Advanced Tire Pressure Monitoring System
- ● ● Mercedes-Benz Emergency Call service<sup>3</sup>
- ● ● 7 air bags
- ● — Blind Spot Assist w/Exit Warning Assist<sup>8</sup>
- ○ ● Active Blind Spot Assist w/Exit Warning Assist<sup>8</sup>
- ○ ● Active Lane Keeping Assist<sup>19</sup>
- ● ● PARKTRONIC w/Active Parking Assist<sup>9</sup>
- ● ● Surround View System<sup>10</sup>
- ● ● Crosswind Assist, Trailer Stability Assist<sup>2</sup>
- ○ ● Active Distance Assist DISTRONIC® Active Steering Assist<sup>21</sup>
- ○ ● Active Brake Assist w/Cross-Traffic Function<sup>22</sup>
- ○ ● Active Lane Change Assist,<sup>23</sup> Active Stop-and-Go Assist
- ○ ● Route-based Speed Adaptation,<sup>24</sup> Active Speed Limit Assist
- ○ ● Evasive Steering Assist,<sup>25</sup> Active Emergency Stop Assist
- ● ● LED Daytime Running Lamps and taillamps
- ● ● LED Intelligent Light System w/Ultra Wide Highbeams
- ● ● Adaptive Highbeam Assist
- ● ● KEYLESS-GO® w/SmartKey remote locking and KEYLESS-START
- ○ ● Soft-close doors
- ● ● Power liftgate w/HANDS-FREE ACCESS
- ● ● Advanced antitheft alarm system w/Parking Damage Detector
- ● ● Integrated garage-door opener

### GLS450 GLS580 AMG GLS 63 COMFORT AND CONVENIENCE

- ● ● Power front seats w/3-position memory
- ● ● Heated and ventilated front seats
- ○ ● Multicontour front seats w/massage feature
- ● ● Power-adjustable 40/20/40-split folding 2nd-row seats w/power EASY-ENTRY®
- ○ ● Heated 2nd-row seats
- ● ● Power-folding 50/50-split 3rd-row seats
- ● ● Power tilt/telescoping steering column, included in driver-seat memory
- ● ● Multifunction steering wheel in Nappa leather w/Touch Control Buttons
- — ● AMG Performance steering wheel in Nappa/DINAMICA
- ● — Power tilt/sliding tinted glass sunroof
- ○ ● Panorama roof
- ○ ● Illuminated running boards
- — — 4-zone automatic climate control w/dust/pollen and odor filters
- ○ ● 5-zone automatic climate control w/dust/pollen and odor filters
- ● ● 64-color LED ambient lighting
- ● ● Illuminated front door sills
- ● ● Retractable/removable luggage cover *w/stowage under cargo floor*
- ● ● 12V power outlet in cargo area
- ● ● Household-type 115-volt AC power outlet
- ● ● Heated power side mirrors w/power fold-in
- ● ● Auto-dimming driver-side and inside rearview mirrors
- ● ● Rain-sensing windshield wipers
- ● ● Rear-window wiper/washer w/auto-on in Reverse
- — ● Heated windshield washer system

### ENTERTAINMENT AND NAVIGATION

- ● ● Reconfigurable 12.3" digital instrument cluster display
- ● ● 12.3" high-resolution color touchscreen multimedia display
- ● ● Console-mounted central touchpad controller w/multitouch gestures
- ● ● Color multifunction display (integrated w/instrument cluster)
- ● ● Mercedes-Benz User Experience (MBUX)
- ● ● "Hey, Mercedes" voice assistant w/Natural Language Understanding
- ● ● Apple CarPlay™ and Android Auto<sup>13</sup>
- ● ● MB Navigation<sup>12</sup> w/no-charge over-the-air map updates for 3 years<sup>3</sup>
- ● ● 3 years of Live Traffic Information via *Mercedes me connect*<sup>3</sup>
- ● ● Burmester® Surround Sound System
- ● ● SiriusXM 6-month All Access trial<sup>14</sup>
- ● ● Nine USB-C ports<sup>16</sup>
- ● ● Hands-free Bluetooth® interface w/audio streaming
- ● ● HD Radio™ receiver
- ● ● Inductive wireless charging w/NFC pairing<sup>26</sup>
- ● ● 3 years of *Mercedes me connect* services<sup>3</sup>

DIMENSIONS		GLS450 4MATIC SUV	GLS580 4MATIC SUV	AMG GLS 63 SUV
Wheelbase		123.4"	123.4"	123.4"
Overall length		205.0"	205.2"	206.4"
Overall height		71.8"	71.8"	70.2"
Overall width		w/mirrors 84.9"	84.9"	84.9"
Curb weight		5,467 lbs	5,754 lbs	5,798 lbs
Headroom		1st row—2nd row 39.4"—40.2"	39.4"—40.2"	39.4"—40.2"
Legroom		1st row—2nd row 40.3"—41.9"	40.3"—41.9"	40.3"—41.9"
Shoulder room		1st row—2nd row 59.3"—Info NA	59.3"—Info NA	59.3"—Info NA
Cargo capacity, <sup>4</sup> floor to ceiling		Behind 3rd-row seat 17.4 cu ft	17.4 cu ft	17.4 cu ft
		2nd and 3rd rows folded 84.7 cu ft	84.7 cu ft	84.7 cu ft

### GLS450 GLS580 AMG GLS 63 OPTION PACKAGES

- ▲ ▲ ▲ **6-seat cabin configuration**
  - Twin power 2nd-row captain's chairs w/armrests *Includes aisle to 3rd row*
- ○ ○ **Warmth & Comfort Package**
  - Rapid heating feature for front seats
  - Heated front and 2nd-row armrests
- ○ ○ **Air Balance Package**
  - Air Balance cabin-air purification system
  - Air Balance cabin fragrance system
- — ○ **ENERGIZING Package PLUS** *Requires Warmth & Comfort Pkg*
  - ENERGIZING Comfort
  - Contents of Air Balance Package *Also available separately*
- — ○ **Executive Rear Seat Package** *Requires 7-seat cabin configuration*
  - 2nd-row comfort head restraints
  - 2nd-row wireless charging
  - Wireless, detachable 2nd-row MBUX tablet for control of cabin settings
- ○ ○ **Executive Rear Seat Package PLUS** *Requires 7-seat cabin configuration*
  - Contents of Executive Rear Seat Package
  - Heated, ventilated and multicontour 2nd-row seats w/massage feature
  - Heated and cooled 2nd-row cupholder
- ○ ● **Driver Assistance Package PLUS**
  - Active Distance Assist DISTRONIC®, Active Steering Assist<sup>21</sup>
  - Active Brake Assist w/Cross-Traffic Function<sup>22</sup>
  - PRE-SAFE PLUS rear collision detection/preparation<sup>7</sup>
  - Active Blind Spot Assist<sup>8</sup>
  - Active Lane Keeping Assist<sup>19</sup>
  - Active Lane Change Assist,<sup>23</sup> Active Stop-and-Go Assist
  - Route-based Speed Adaptation,<sup>24</sup> Active Speed Limit Assist
  - Evasive Steering Assist,<sup>25</sup> Active Emergency Stop Assist
- ○ — **Night Package**
  - Gloss Black exterior accents
  - 21" AMG twin 5-spoke wheels<sup>1</sup> w/black accents
- ○ — **E-ACTIVE BODY CONTROL Package**
  - E-ACTIVE BODY CONTROL
  - Underguard *Also in Off-Road Pkg*
- ○ — **Off-Road Package** *Requires Underguard or E-ACTIVE BODY CONTROL Pkg*
  - Enhanced Off-road driving program<sup>5</sup>
  - 2-speed transfer case with low range
  - Downhill Speed Regulation (DSR)
  - Underguard *Also in E-ACTIVE BODY CONTROL Pkg*

### GLS450 GLS580 AMG GLS 63 INDIVIDUAL OPTIONS

- ○ ● Active Lane Keeping Assist<sup>19</sup> *Also in Driver Assistance Pkg PLUS*
- ○ ○ Trailer hitch (Class IV)<sup>2</sup>
- ○ ○ MAGIC VISION CONTROL heated wiper/washer system
- ○ ● 2nd-row side-impact air bags
- — ○ AMG Night Package *Requires black or black-accented wheels*
- — ▲ Red-painted brake calipers
- — ○ AMG High-performance Ceramic Composite Front Braking System
- — ○ Carbon fiber engine compartment cover
- ○ ● Panorama roof
- ○ ● Soft-close doors
- ○ ● Illuminated running boards
- ○ ○ Acoustic Comfort Package
- ○ ○ Heated steering wheel *Deletes AMG DRIVE UNIT on GLS 63*
- ○ — Wood/leather steering wheel *Requires Natural Grain Brown Walnut, Natural Grain Grey Oak, or designo® Brown Linden "Flowing Lines" wood trim*
- ○ — Topstitched MB-TeX lower dash and door trim *Nappa upper trim std on GLS 63*
- ○ ○ Exclusive Trim Package *NA w/aluminum or Metal Weave trim*
- — ▲ AMG Performance steering wheel in Nappa leather
- — ○ AMG Performance steering wheel in DINAMICA *NA w/heated steering wheel*
- — ○ AMG Performance steering wheel in Carbon Fiber/DINAMICA<sup>27</sup>
- ○ ○ Burmester High-End 3D Surround Sound system<sup>28</sup> *NA w/MBUX Interior Assistant*
- ○ ○ MBUX Augmented Video for Navigation
- ○ ○ MBUX Interior Assistant (driver and front-passenger gesture control)
- ○ ○ Head-Up Display<sup>15</sup>
- ○ ● Multicontour front seats w/massage *Requires Warmth & Comfort Pkg plus leather or Nappa leather upholstery*
- ○ ● Heated 2nd-row seats *Also in Executive Rear Seat Pkg PLUS on GLS 580*
- ○ ○ Heated 3rd-row seats *Requires heated 2nd row; GLS450 also requires 5-zone climate control*
- ○ ● 5-zone climate control
- ○ ○ Power 2nd-row side-window sunshades
- ○ ○ Heated and cooled front cupholders
- ○ ● Black DINAMICA headliner *NA w/Macchiato Beige upholstery*
- — ▲ Red seat belts *Requires Black Exclusive Nappa leather (w/o diamond stitching)*
- ● ● Grey Linden wood trim
- ▲ ▲ ▲ Aluminum trim with Longitudinal Grain
- ○ ○ Natural Grain Grey Oak wood trim
- ○ ○ Natural Grain Brown Walnut wood trim
- ○ ○ *designo* Natural Grain Black Flamed Ash wood trim
- ○ ○ *designo* Brown Linden "Flowing Lines" wood trim
- ○ ○ Metal Weave trim
- — ○ AMG Carbon Fiber trim
- ▲ ▲ Metallic paintwork
- ○ ○ *designo* paintwork

Please see endnotes at back of brochure.



# UPHOLSTERY

● Standard ○ Optional

MB-TEX



● GLS 450

LEATHER



○ GLS 450  
● GLS 580

EXCLUSIVE NAPPA LEATHER



○ GLS 450  
○ GLS 580

EXCLUSIVE NAPPA LEATHER



● AMG GLS 63 *Includes Nappa leather dash and door trim*

EXCLUSIVE NAPPA LEATHER



○ AMG GLS 63 *Includes diamond stitching, plus Nappa leather dash and door trim*

BACK TO INDEX

21

BUILD YOUR OWN

GO TO MBUSA.COM

21

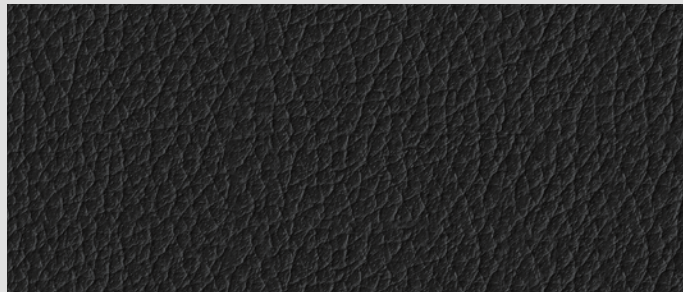
BUILD YOUR OWN



# INTERIOR COLORS & TRIM

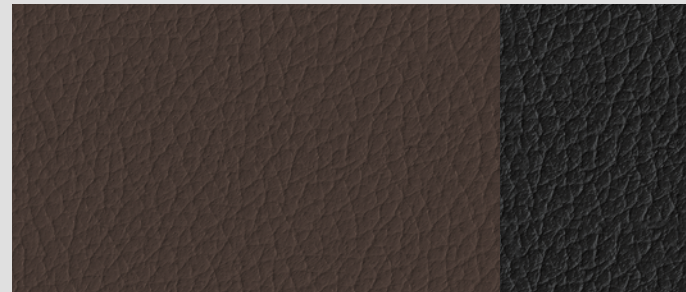
● Standard ○ Optional ▲ No-charge option

## BLACK



MB-Tex, leather, Exclusive Nappa leather *GLS450*  
 Leather, Exclusive Nappa leather *GLS580*  
 Exclusive Nappa leather *AMG GLS63*

## ESPRESSO BROWN/BLACK



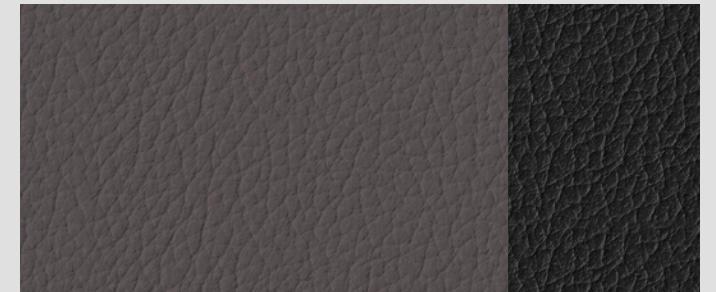
MB-Tex, leather *GLS450*  
 Leather *GLS580*

## MACCHIATO BEIGE/BLACK



MB-Tex, leather *GLS450*  
 Leather *GLS580*

## TARTUFO/BLACK



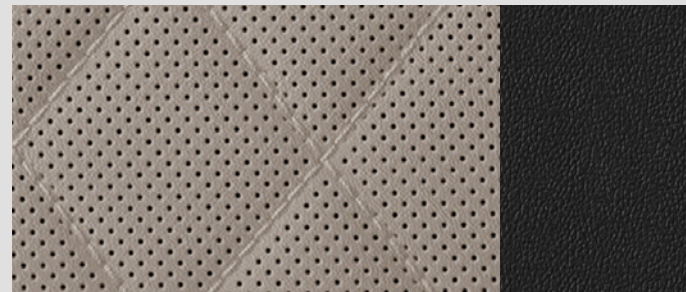
Leather *GLS450*  
 Leather *GLS580*  
 Exclusive Nappa leather *AMG GLS63*

## MAGMA GREY/BLACK w/DIAMOND STITCHING



Exclusive Nappa leather *AMG GLS63*

## MACCHIATO BEIGE/BLACK w/DIAMOND STITCHING



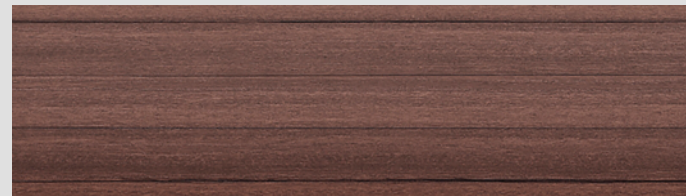
Exclusive Nappa leather *AMG GLS63*

## GREY LINDEN WOOD



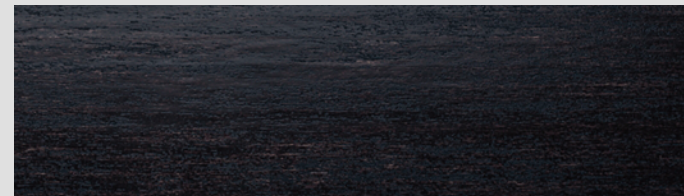
● All models

## NATURAL GRAIN BROWN WALNUT WOOD



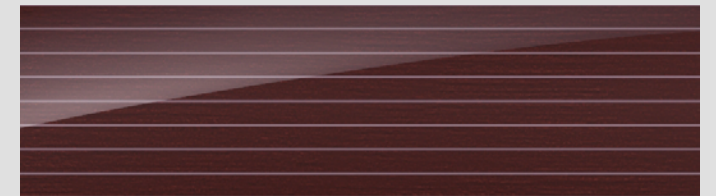
○ All models

## NATURAL GRAIN GREY OAK WOOD



○ All models

## *designo*® BROWN LINDEN "FLOWING LINES" WOOD



○ All models

## *designo* NATURAL GRAIN BLACK FLAMED ASH WOOD



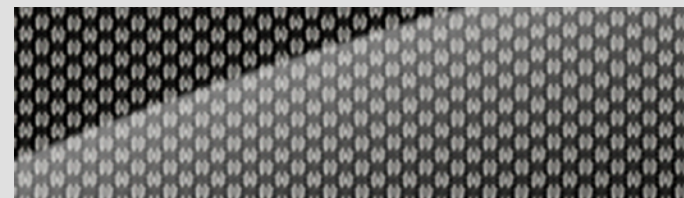
○ All models

## ALUMINUM WITH LONGITUDINAL GRAIN



▲ All models

## METAL WEAVE



○ All models

## AMG CARBON FIBER

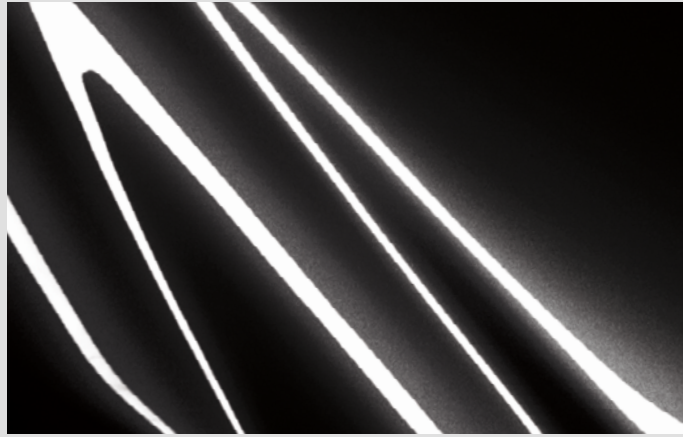


○ AMG models



# PAINTWORK

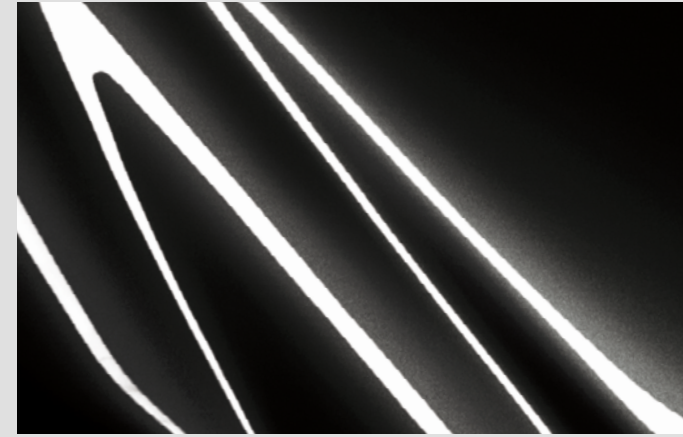
BLACK



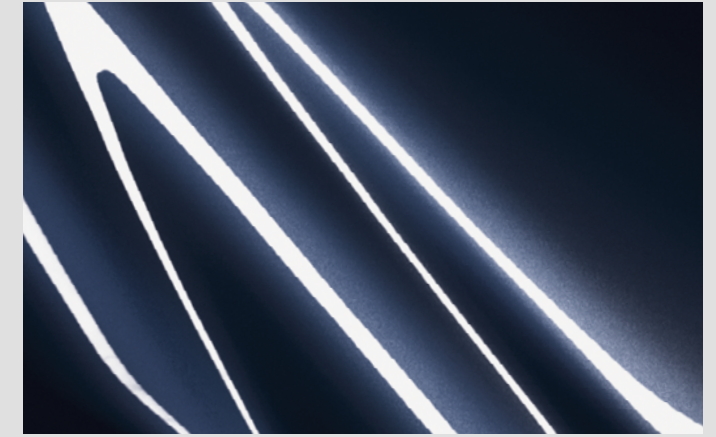
POLAR WHITE



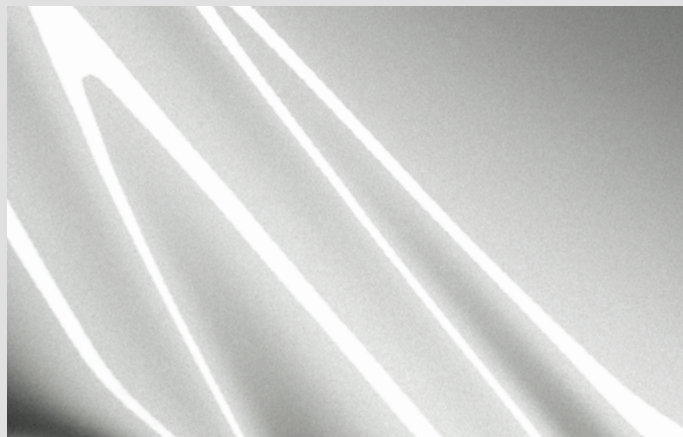
OBSIDIAN BLACK METALLIC



LUNAR BLUE METALLIC



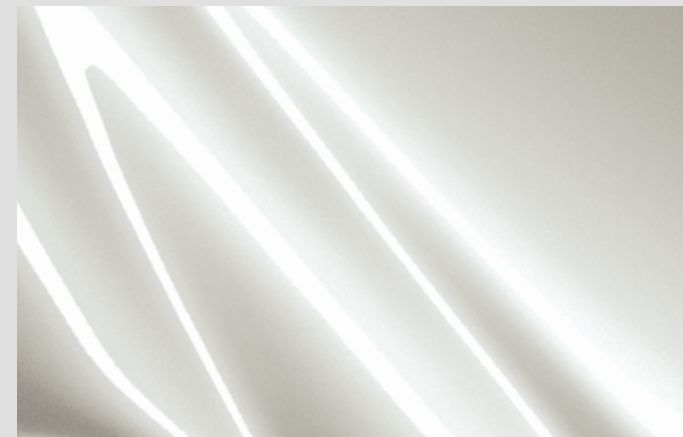
IRIDIUM SILVER METALLIC



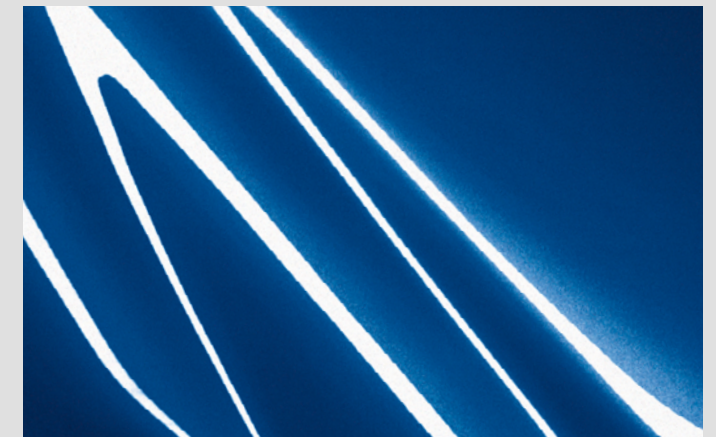
EMERALD GREEN METALLIC



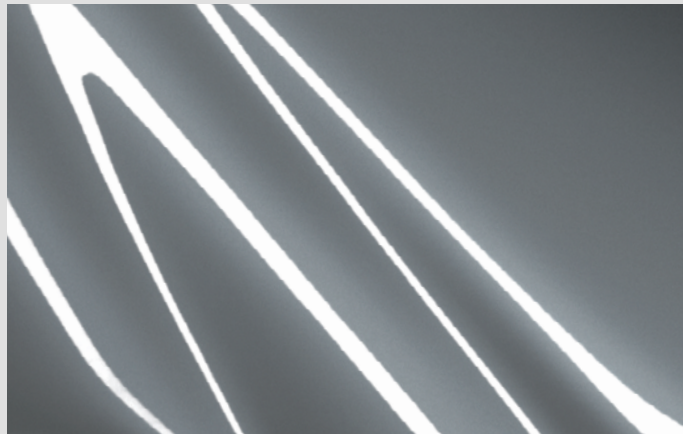
MOJAVE SILVER METALLIC



BRILLIANT BLUE METALLIC



SELENITE GREY METALLIC



*designo*® CARDINAL RED METALLIC



*designo* DIAMOND WHITE METALLIC





# WHEELS

● Standard ○ Optional

20" 8-SPOKE



● GLS 450

20" TWIN 5-SPOKE



○ GLS 450

21" 5-SPOKE



○ GLS 450

21" TRIPLE 5-SPOKE



○ GLS 450

21" AMG TWIN 5-SPOKE



SILVER  
● GLS 580

w/BLACK ACCENTS  
○ GLS 580  
*Night Pkg*

22" AMG MULTISPOKE



SILVER  
○ GLS 580

w/BLACK ACCENTS  
○ GLS 580  
*Requires Night Pkg*

23" AMG TWIN 5-SPOKE



w/BLACK ACCENTS  
○ GLS 580

21" AMG 10-SPOKE



● AMG GLS 63

22" AMG MULTISPOKE



SILVER  
○ AMG GLS 63

MATTE BLACK  
○ AMG GLS 63

23" AMG FORGED MULTISPOKE



SILVER  
○ AMG GLS 63

MATTE BLACK  
○ AMG GLS 63

23" AMG FORGED MONOBLOCK-STYLE



SILVER  
○ AMG GLS 63

MATTE BLACK  
○ AMG GLS 63



# OWNERSHIP & EXPERIENCE



## DAILY COMMUTE OR ROADTRIP, THOUGHTFUL TECHNOLOGY HELPS MAKE ANY JOURNEY A JOY.

*Mercedes me connect* puts a network of features in your car, on your smartphone, and in the digital world around you.<sup>3</sup> And all of them collaborate to help keep you on track, on time, and feeling you're on top of your real world.

- You can remote-start your car, locate where it's parked, configure vehicle settings from your phone, and more.
- You can look up destinations on your phone and send them to the MB Navigation system in your car.
- You can offer WiFi to your passengers, and enjoy audio from all over the planet with TuneIn Radio.

Models with Car-to-X Communication can share info on traffic, road hazards and other conditions with each other, via a central reporting base. So you might find out about a tie-up on your route before you get caught up in it.

The map database for your car's MB Navigation system can be updated in your driveway, over the air, up to twice a year—with no need to bring it to the dealership.

## WHEREVER YOU DRIVE, THERE'S A TEAM OF SUPPORTIVE PEOPLE LOOKING OUT FOR YOU.

Mercedes-Benz was the first automaker to introduce its own Roadside Assistance Program in the US. For more than 35 years, customers have called on—and counted on—factory-trained experts in times of need.<sup>29</sup>

- A button in your car can connect you. If an air bag or seat-belt tensioner is activated, your car can place the call on your behalf, and even transmit your location.
- They can send help—usually a trained dealer service technician—to your location, even for a jump-start.
- If you see a warning light, so can the experts, and they can often help diagnose trouble over the phone.

Your Mercedes-Benz dealer is helping make service and maintenance even more convenient, with options such as Express Service, Mobile Service, pickup and delivery, online scheduling, and contactless payment. Your dealer can tell you more about the specific benefits they offer.

## YOUR MERCEDES-BENZ EXPERIENCE SHOULD ALWAYS FEEL SPECIAL.

Driving a Mercedes-Benz feels like joining a club, as well as a family. Wherever you go, you're part of a history that started with the first car, and always keeps racing ahead.

- For decades, groundbreaking innovations have protected, entertained and indulged Mercedes-Benz drivers first. While many have gone on to become the standard for all cars, you get to drive the future, today.
- From the AMG Lounge to #MBPhotoPass on Instagram, Mercedes-Benz owners have many ways to connect and interact.

Your car and your dealer are in on it, too.

- *Mercedes me* lets your car communicate its service needs to your preferred dealer.
- Your dealer can reach out to you to book an appointment or offer drive-in service.

## COMMITTED TO COMMUNITY

Mercedes-Benz USA is committed to educating and empowering the next generation of diverse leaders.

To help equip them with the tools for success, MBUSA partners with two national organizations that invest in the futures of young people in communities across the country. As a Mercedes-Benz driver, you become a part of this effort to give hundreds of thousands of youth a better life today, and all of us a brighter tomorrow.

Learn more about how Mercedes-Benz USA gives back at [MBUSA.com/community](https://www.mbusa.com/community)



A nationwide network of youth sports programs, Laureus Sport for Good USA is focused on improving the health, education, employment and social cohesion of youth in underserved communities. Since 2012, Laureus USA has helped nearly half a million young people in 150 cities.

To learn more, visit [laureususa.com](https://www.laureususa.com)

## JOHNNY MAC SOLDIERS FUND

Johnny Mac Soldiers Fund helps honor military service and sacrifice by providing scholarships to veterans and military family members—particularly the children of our nation's fallen and disabled. Since 2014, Johnny Mac has awarded more than \$16 million in scholarships to some 2,000 students.

To learn more, visit [johnnymac.org](https://www.johnnymac.org)



# ENDNOTES

- \* Item is optional or not available on some models. See *Build Your Own* in this brochure or visit MBUSA.com for more information.
- 1 Lower-aspect-ratio tires and accompanying wheels provide substantially increased treadwear, increased tire noise and reduced ride comfort. Serious wheel and tire damage may occur if the vehicle is operated on rough or damaged road surfaces or upon encountering road debris or obstacles. These tires are not designed for use on snow and ice. Winter tires mounted on appropriately sized and approved wheels are recommended for driving in those conditions.
  - 2 Read Operator's Manual before towing. In some states, aftermarket trailer brakes are required. See dealer for details.
  - 3 All *Mercedes me* services operate only where cellular and GPS signals are available, which are provided by third parties and not within the control of Mercedes-Benz USA, LLC. *Mercedes me connect assist* services, and 3 years of *Mercedes me connect* services are included at no additional charge with new-vehicle sales and leases at an authorized Mercedes-Benz dealer. Models with MB Navigation also include 3 years of over-the-air map updates (up to twice per year), 3 years of live traffic information provided by HERE Technologies, and a 1-month trial (up to 1GB) of in-vehicle WiFi and streaming audio. Subscriber Agreement is required for service to be active. Some services are only available on select vehicles. Your PIN is required to use certain services. Connection may be limited by cellular signal and other factors. Features may be introduced and updated at varying dates, and may also require a vehicle software update. Some services may be limited or restricted in some areas. Driver is responsible for complying with traffic and other laws. The *Mercedes me connect* Mobile App is compatible with Apple iPhone® models and Android-based phones, and may require a software update. See your dealer or MBUSA.com/mercedesme for details.
  - 4 Unsecured cargo can become hazardous in a collision. Always secure cargo using the floor-mounted tie-downs.
  - 5 Off-road driving should only be attempted by drivers with the necessary skill, experience and understanding of the vehicle's limits. Read Operator's Manual before driving off-road.
  - 6 Active Brake Assist may not be sufficient to avoid an accident. It does not react to certain stationary or suddenly moving objects or pedestrians, may not react in certain situations where objects cannot be clearly identified, nor does it recognize or predict the curvature and/or lane layout of the road or every movement of vehicles and pedestrians ahead. It is the driver's responsibility at all times to be attentive to traffic and road conditions, and to provide the steering, braking and other driving inputs necessary to retain control of the vehicle. Drivers are cautioned not to wait for the system's alerts before braking, as that may not afford sufficient time and distance to brake safely. See Operator's Manual for system operating speeds and additional information and warnings.
  - 7 PRE-SAFE® closes the side windows when the system's sensors detect side movements that suggest a possible rollover or side impact. Audio/multimedia system must be turned on for PRE-SAFE Sound to operate. PRE-SAFE PLUS cannot prevent a collision, and does not alert the driver of an impending collision or system activation. It does not intervene if vehicle is backing up, and does not apply the brakes if the driver is accelerating or if Active Parking Assist is operating. When PRE-SAFE closes the side windows, a small gap is left near the fully closed position.
  - 8 Blind Spot Assist is a warning system only. Blind Spot Assist or Active Blind Spot Assist may not be sufficient to avoid all accidents involving vehicles in your blind spot and does not estimate the speed of approaching vehicles. It must not be used as a substitute for driver awareness and checking of surrounding traffic conditions. See Operator's Manual for system's operating speeds and additional information and warnings.
  - 9 Parking assistance systems are not substitutes for driver attention to the immediate surroundings, as well as any people, animals or vehicles in or approaching the vehicle's maneuvering range. System cannot determine if a space is legally available or of a suitable surface for parking. See Operator's Manual for additional information, tips and warnings.
  - 10 Surround View System does not audibly notify driver of nearby objects and is not a substitute for actively checking around the vehicle for any obstacles or people. Images displayed may be limited by camera field of view, weather, lighting conditions and the presence of dirt, ice or snow on the cameras.
  - 11 Even the most advanced safety systems may not be sufficient to avoid an accident. Please refer to more detailed information on specific systems elsewhere in this brochure, at MBUSA.com, and in the vehicle's Operator's Manual. Some systems may be optional.
  - 12 While the navigation system provides directional assistance, the driver must remain focused on safe driving behavior, including paying attention to traffic and street signs. The driver should utilize the system's audio cues while driving and should only consult the map or visual displays once the vehicle has been stopped in a safe place. Maps do not cover all areas or all routes within an area.
  - 13 Apple CarPlay™ is a product of Apple Inc. Android Auto is a product of Google Inc. Device and app providers' terms and privacy statements apply. Requires connected compatible device and data plan. Apps, content and features are selected solely by their providers. Connection to apps and streaming services may be limited by the device's network connection. Data usage is routed through device and subject to fees, charges and restrictions in user's wireless plan. Vehicle's factory audio/information interface may not be used simultaneously with Apple CarPlay or Android Auto. When Apple CarPlay or Android Auto is in use, the steering-wheel voice control button accesses Siri® or Google voice recognition software for voice commands.

- 14 The purchase of a new, SiriusXM®-equipped vehicle includes a 6-month introductory subscription to the SiriusXM All Access package. Eligible pre-owned vehicles equipped with SiriusXM will receive a 3-month trial subscription to SiriusXM All Access package. Trial length and service availability may vary by model, model year or trim. If you decide to continue your subscription after your trial, the plan you choose will automatically renew and you will be charged according to your chosen payment method at then-current rates. Fees and taxes apply. To cancel you must call SiriusXM at 1-866-635-2349. See SiriusXM Customer Agreement for complete terms at siriusxm.com. All fees and programming subject to change.
- 15 Display may not be visible with certain eyewear, including polarized glasses.
- 16 An adapter cable is required to connect a device with an earlier-generation USB port.
- 17 Stated rates of acceleration are estimated based upon manufacturer's track results and may vary depending on model, environmental and road surface conditions, driving style, elevation and vehicle load.
- 18 2021 EPA estimated fuel economy (city/highway) is 20/24 mpg for GLS 450, 14/18 mpg for AMG GLS 63. Compare the estimated mpg to the estimated mpg of other vehicles. You may get different mileage depending on how fast you drive, weather conditions and trip length. Estimates for GLS 580 were unavailable at time of publication. Please see your dealer or visit fueleconomy.gov.
- 19 Driving while drowsy or distracted is dangerous and must be avoided. ATTENTION ASSIST® is a warning system only. ATTENTION ASSIST and Active Lane Keeping Assist may be insufficient to alert a fatigued or distracted driver of lane drift and cannot be relied on to avoid an accident or serious injury. See Operator's Manual for system's operating speeds and additional information and warnings.
- 20 Car-to-X services are activated as part of *Mercedes me connect*. Connected services operate only where cellular and GPS satellite signals are available, which are provided by third parties and not within the control of Mercedes-Benz USA, LLC. See your dealer or MBUSA.com/mercedesme for details.
- 21 Active Distance Assist DISTRONIC® cruise control is not a substitute for active driving involvement. It does not adapt cruising speed in response to stationary objects, nor does it predict the curvature and lane layout of the road ahead or the movement of vehicles ahead. Active Steering Assist requires driver to hold steering wheel and be ready to steer vehicle at any time. It may not recognize lane markings in some lighting, weather and road conditions. It is the driver's responsibility at all times to be attentive to traffic and road conditions, and to provide the steering, braking and other driving inputs necessary to retain control of the vehicle. Drivers are cautioned not to wait for the system's alerts before braking, as that may not afford sufficient time and distance to brake safely.
- 22 Drivers are cautioned not to wait for the system's alerts before braking, as that may not afford sufficient time and distance to brake safely. Braking effectiveness also depends on proper brake maintenance, and tire and road conditions. See Operator's Manual for system operating speeds and additional information and warnings.
- 23 Active Lane Change Assist is not a substitute for active driving involvement. It estimates but does not predict the curvature and lane layout of the road ahead or the movement of vehicles ahead. It is the driver's responsibility at all times to be attentive to traffic and road conditions, and to provide the driving inputs necessary to retain control of the vehicle. System may not detect some objects, obstacles or vehicles in the area into which the vehicle would move. See Operator's Manual for system operating speeds and additional information and warnings.
- 24 Driver is responsible for safely slowing and/or stopping vehicle at intersections, and for giving right-of-way to other drivers. System is not a substitute for driver awareness to posted speed limits and other conditions. Driver is responsible for safely operating vehicle in accordance with local traffic laws and driving conditions.
- 25 No system, regardless of how advanced, can overcome the laws of physics or correct careless driving. Please always wear your seat belt. Driver's deliberate steering inputs are required to initiate the system's action, and can override its intervention at any time. See Operator's Manual for system operating speeds and additional information and warnings.
- 26 Wireless charging and NFC pairing available only for devices with compatible technology and size. See Operator's Manual for more information. Devices sold separately.
- 27 Requires Natural Grain Grey Oak wood or AMG Carbon Fiber trim.
- 28 Option deletes spare wheel. Vehicle is provided with TIREFIT sealant and a portable air pump.
- 29 Roadside Assistance repairs may involve charges for parts, service and towing. Vehicle must be accessible from main roads. Depending on the circumstance, these services may be provided by an outside provider, courtesy of Mercedes-Benz Roadside Assistance. Restricted roadways, acts of nature and vehicle accessibility may limit our ability to provide services to you. For full details, eligibility requirements, and limitations/exclusions of Sign and Drive services, as well as the Roadside Assistance Program, please see your dealer.

# VISIT, FOLLOW & WATCH



[facebook.com/mercedesbenzusa](https://facebook.com/mercedesbenzusa)



[linkedin.com/company/mercedes-benz-usa](https://linkedin.com/company/mercedes-benz-usa)



[instagram.com/mercedesbenzusa](https://instagram.com/mercedesbenzusa)



[twitter.com/MercedesBenzUSA](https://twitter.com/MercedesBenzUSA)



[youtube.com/mbusa](https://youtube.com/mbusa)

©2020 Mercedes-Benz USA, LLC  
One Mercedes-Benz Drive, Sandy Springs, GA 30328

1-800-FOR-MERCEDES  
MBUSA.com

Marketing Communications. All illustrations and specifications contained in this brochure are based on the latest product information available at the time of publication. Mercedes-Benz USA reserves the right to make changes at any time, without notice, to colors, materials, equipment, specifications and models. Any variations in colors shown are due to reproduction variations of the printing process. Illustrations may include test situations. Some vehicles may be shown with non-U.S. equipment. Some vehicles are shown with optional equipment. Apple CarPlay, iPad, iPhone and Siri are trademarks, registered trademarks or service marks of Apple Inc. Bluetooth is a registered trademark of Bluetooth SIG, Inc. Burmester is a registered trademark of Burmester Audiosysteme GmbH, Berlin, Germany. Android and Android Auto are trademarks of Google Inc. HERE is a trademark of HERE North America, LLC. HD Radio is a proprietary trademark of iBiquity Digital Corporation. SiriusXM and all related marks and logos are trademarks of Sirius XM Radio Inc. Tuneln is a registered service mark of Tuneln, Inc. Twitter is a registered trademark of Twitter, Inc.