

# More Mercedes-Benz

## Genuine Accessories & Collection



News from Palo Alto

App development in Silicon Valley

All round perfection

Caring for your light-alloy wheels

Originals for the original

What is it that makes that crucial difference?



Mercedes-Benz



# More Mercedes-Benz

Design, technology, comfort, safety – there are plenty of reasons to choose a Mercedes-Benz. Whatever your key criteria were when it came to choosing your car, you will find the same qualities in our genuine accessories and in the Mercedes-Benz Collection. Both live up to the high standards which the star brand promises: the best or nothing.



## ELECTRONICS

*Entertainment* 04 // 05  
*Navigation & Communication* 06 // 07



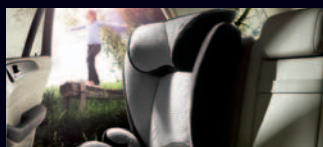
## APPEARANCE

*Styling* 08 // 11  
*Light-Alloy Wheels* 10 // 13



## PROTECTION & CARE

*Boot Accessories* 14 // 15  
*Interior & Body Protection* 16 // 17



## SAFETY

*Child Safety & Assistance* 18 // 19



## CARGO & TRAVEL

*Carrier Systems* 20 // 23



## COLLECTION

*Lifestyle Accessories* 24 // 27



### Rear-Seat Entertainment System for the E-Class

For more information on  
Mercedes-Benz Electronics products  
please see pages 04 to 07

Products pictured on title page:

Basic Carrier Bars and small Roof  
Cargo Container 330 with luggage set  
More on pages 20 to 23

Rear spoiler and roof spoiler  
with side sill panels and  
Sport Tail Lamp Kit for the E-Class  
More on pages 08 to 10

5-Spoke two-tone wheel for the E-Class  
More on pages 11 to 13

Luggage items and teddy bear from  
the Mercedes-Benz Collection  
More on pages 24 to 27



Mercedes-Benz genuine Accessories are precision-tailored to each vehicle. Some individual products may not be suitable for every model or every equipment configuration. Please also bear in mind that different regulations apply in different states. Your Mercedes-Benz partner will be happy to advise you and help you find the right products for your specific model.



#### Protect what's important to you.

Help ensure you have all the stopping power you need with a Brake and Tire Inspection performed by the experts who know your Mercedes-Benz best.

#### Genuine Mercedes-Benz Brake Components:

- Provide outstanding deceleration performance, and have been designed to the unique specifications of your vehicle model.
- Are compatible with original production components; optimally configured for electronic systems such as ABS and ESP.





## More Entertainment

Electronic products play a big part in helping you to relax and enjoy your journey in comfort. Our range includes cutting-edge navigation technology and a variety of multimedia options. All of these are fully integrated into your vehicle's display and control concept. And that helps enhance your safety.

After all, it's important that nothing distracts you from the surrounding traffic. Travelling with passengers in the rear? Not a problem.

We offer a variety of innovative products for your rear-seat passengers too.

### iPad® Docking Station

Mobile entertainment with your Mercedes-Benz and your iPad®: Watch movies, play music, view pictures, play games, surf the internet, all from the convenience of your iPad® without having to hold it in your hands. The Mercedes-Benz iPad® Docking Station securely holds your iPad® in place behind the passengers' headrests. Enjoy a high-speed connection in conjunction with the Mercedes-Benz In-Vehicle Hotspot. Not only will your iPad® be held securely in place, the Docking station also provides charging capability to ensure you stay connected on the road. For optimum viewing, the iPad® Docking Station can be rotated up to 90 degrees and be tilted.

Available for iPad®, iPad 2® and iPad 3®.

iPad 1®, e.g. for the E-Class and M-Class

A218 820 0076

A166 820 0076

iPad 2® & iPad 3®

A218 820 0276

A166 820 0276

Also available as clip-on version.





#### Accessory Rear-Seat Entertainment System

This high-performing entertainment system allows the rear passengers to watch DVDs, look at their favorite pictures and even play video games. Two superb 7" LCD color screens are mounted to the back of the seat to eliminate driver distraction, function independently with integrated DVD players and are able to play two different movies or music choices simultaneously. Wireless noise-reduction headphones allow for tangle-free operation, easy storage and less noise distraction for the driver. The USB and SD card interfaces allow further storage media to be connected with the Rear-Seat Entertainment System. Also available in beige. No factory-fitted pre-installation required.

e.g. for the E-/CLS-/GLK-Class  
B6 782 7055

e.g. for the M-Class  
A166 870 0796



#### Portable Rear-Seat Entertainment System

This high-performance entertainment system allows the rear passengers to watch DVDs, look at their favorite pictures and even play video games. Two superb 7" LCD color screens are mounted to the back of the seat to eliminate driver distraction, function independently with integrated DVD players and are able to play two different movies or music choices simultaneously. Wireless noise-reduction headphones allow for tangle-free operation, easy storage and less noise distraction for the driver. The USB and SD card interfaces allow further storage media to be connected with the Rear-Seat Entertainment System. Additionally, the monitors can be removed at any time in order to create additional space for the rear bench. Once removed the monitors can be used outside of the vehicle with an optional power cable.

Portable Rear-Seat Entertainment System,  
e.g. for the M-Class and GL-Class MY2013  
A166 870 0096



Transparent illuminated symbols make the user interface unique and revolutionary for Mercedes-Benz owners.

App development in Silicon Valley

## News from Palo Alto

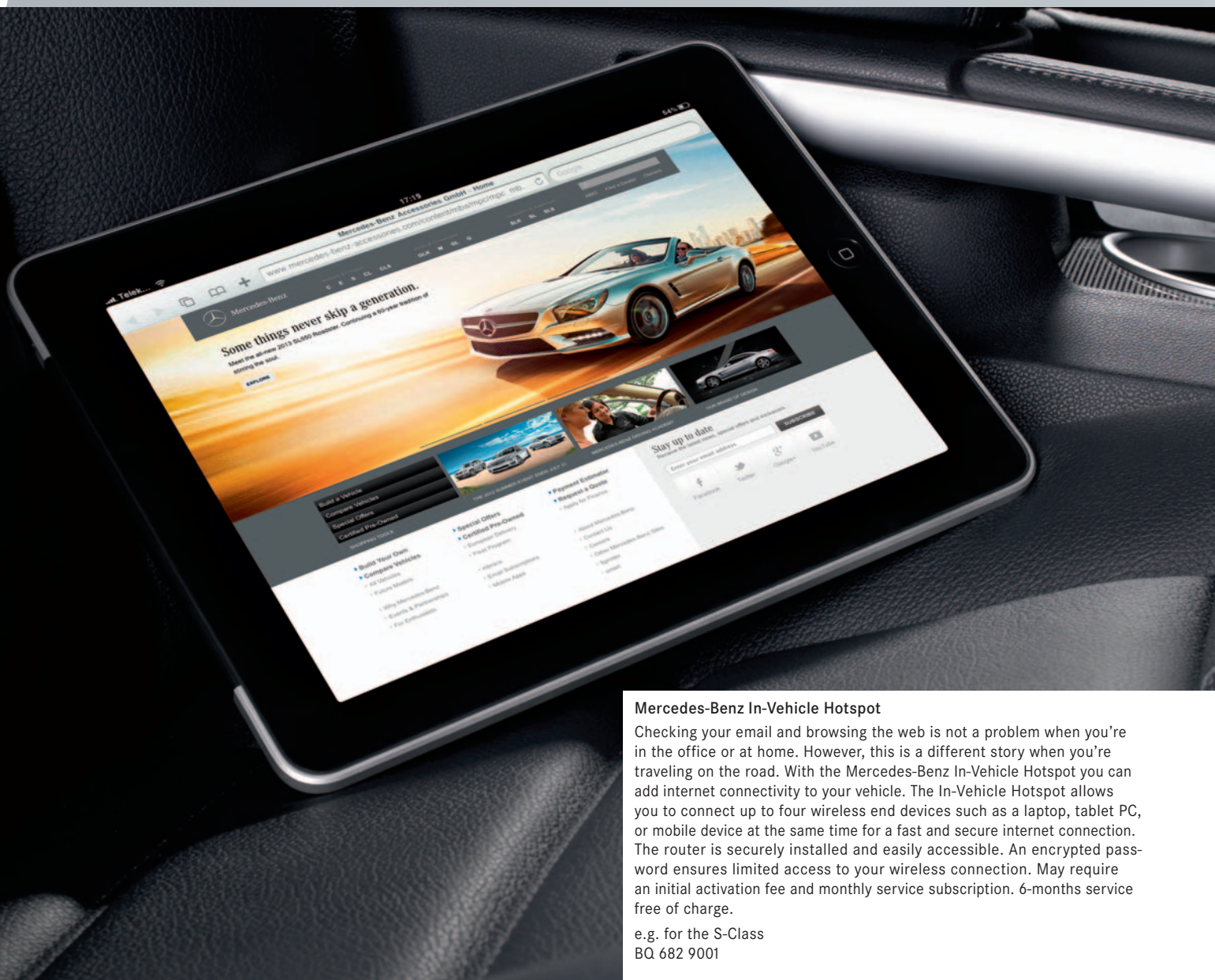
➔ In recent years digital technology has fundamentally changed our lives.

At the Mercedes-Benz Research and Development center in California the "App Development Group" is working on ways to make the exciting possibilities of mobile communication accessible to car drivers.

One example of seamless integration of the Apple® iPhone® is the soon to come "Drive Kit Plus". Together with the new, in-house developed "Digital DriveStyle App", drivers can access all the key content of their iPhone® like Facebook®, Twitter® and internet person-

alized radio through the in-vehicle display and enjoy safe and convenient operation of the device via the Controller on the center armrest. Additionally, access to the voice-based intelligent companion Siri™ will be enabled. Given verbal instructions, for example, it will access the personal calendar to make or decline requests for appointments or meetings. SMS text messages can be dictated or read out, and emails sent. Siri™ can also be used to access the complete range of music stored on an iPhone® or to request the latest weather forecast.





#### Mercedes-Benz In-Vehicle Hotspot

Checking your email and browsing the web is not a problem when you're in the office or at home. However, this is a different story when you're traveling on the road. With the Mercedes-Benz In-Vehicle Hotspot you can add internet connectivity to your vehicle. The In-Vehicle Hotspot allows you to connect up to four wireless end devices such as a laptop, tablet PC, or mobile device at the same time for a fast and secure internet connection. The router is securely installed and easily accessible. An encrypted password ensures limited access to your wireless connection. May require an initial activation fee and monthly service subscription. 6-months service free of charge.

e.g. for the S-Class  
BQ 682 9001



#### Accessory Navigation System

The Accessory Navigation System from Mercedes-Benz allows the Standard Audio 20 Radio and 5.8-inch display in the SLK- and C-Class to be upgraded from the standard stereo system to an innovative, multifunctional navigation system. In addition to the advantages of 3D GPS map navigation and included lifetime traffic, the Accessory Navigation System offers a variety of many other navigation functions such as recommendations for choosing the optimal lane. Additionally, highway signs and exit ramps are being displayed on the navigation screen, as well as actual road signs and lane information. The destination can easily be selected by moving the cursor to a location on the map or simply by using the zip code or address entry. All of these functions can be accessed and operated using the conveniently located vehicle's central controller.

e.g. for the C-Class Coupe/Sedan MY2012  
A204 870 8796

e.g. for the SLK-Class MY2012  
A204 870 8796

Certain products apply to various model series. Please see your dealer for details.





#### Becker® MAP PILOT

For the latest models with the standard radio and 5.8" color-LCD screen, the new Becker® MAP PILOT adds an advanced, fully integrated navigation upgrade to the in-dash display and controls. Operation is seamless and simple, using the vehicle's standard central controller and steering-wheel controls. You can input destinations and stopovers using intuitive menus, or even your voice. Vivid maps and detailed information, including optimal lane recommendations, are displayed on the central screen, while the driving instructions can also be shown on the standard menu display in the instrument cluster. This allows you to use either screen for other functions while keeping your navigation information easily in view. To help assure

the quickest journey, the latest traffic and route information – with lifetime service provided by the Traffic Message Channel (TMC) – lets you base your route on current conditions and enjoy automatic updating along the way. The MAP PILOT's compact module is discreetly housed in the glovebox in a custom-fit cradle. Easy to update via the Web ([www.beckermappilot.com](http://www.beckermappilot.com)), the module removes from the cradle with a single motion and plugs into your laptop via a USB cable. Becker's 45-day "fresh map guarantee" helps ensure that your navigation data is up to date before you hit the road. Requires factory option pre-wiring.

e.g. for the C-Class and SLK-Class (MY 2013)

A166 900 9608



#### Navigation DVD for COMAND APS

The Mercedes-Benz COMAND Navigation System is a fully integrated system with Global Positioning System (GPS) technology to help you plan trips, navigate detours and avoid getting lost. Notice however, how quickly the surroundings change: roads are added or diverted, restaurants open and close, hotels and hospitals are built, ATMs move. That is why Mercedes-Benz offers reliable, and updated navigation data to help get you where you need to go effortlessly. The Navigation System also offers 2.3 million Points of Interest in 70 categories including ATMs, restaurants, hotels, airports, museums and more.

e.g. for the S-Class, USA, NTG3.5

BQ 646 0305



#### Nav+4 (Universal Media Interface)

The Nav+4 from Mercedes-Benz allows the standard radio in your C-Class and GLK to be upgraded to an innovative and multifunctional navigation and entertainment center. In addition to the advantages of 3D GPS map navigation, and included lifetime traffic, the Nav+4 allows the user to play back their favorite songs from a range of portable devices via the audio interface in the glove compartment.

e.g. for the C-Class Sedan (MY2008 – 2011) and GLK-Class (MY 2010 – MY 2012)

A204 870 7496





## More Performance

How do you combine advanced technology and individual design to optimum effect? Take a look at our Mercedes-Benz exterior and interior enhancements. From sporty to elegant, we offer a wide selection of attractive designs for each vehicle model.

The styling products are designed to underline the character of your vehicle. Perfectly in tune with the design of your Mercedes-Benz, they help express your individual style.



### Rear Spoiler

Add this rear spoiler for a more athletic look for your Mercedes-Benz, and watch as it subtly accentuates the trunk lines of your vehicle.

e.g. for the E-Class  
A212 793 0288





#### Licence Plate Frames

Choose from several quality stainless steel designs in an assortment of durable finishes to enhance the appearance of your license plates without blocking registration tags.

Design styles include: Mercedes-Benz frame, Slimline frame, AMG Logo frame, and Star Marque solid plate (each sold separately).



#### Trunk Handle

Made of stainless steel in polished or satin finish, this handle attaches to the license plate and trunk lid to help prevent fingerprints and reduce the possibility of scratching the finish on your Mercedes-Benz. It perfectly complements our wide assortment of genuine License Plate Frames. Also available with elegantly laser-etched Mercedes-Benz name.



#### Sport Tail Lamp Kit

These tail lights, with their grey lens, edged in transparent black, lend your Mercedes-Benz an individual look. Simple for your Mercedes-Benz dealer to replace the standard light.

e.g. for the E-Class  
A212 906 1558



#### Roof Spoiler

This roof spoiler extends the roofline of your Mercedes-Benz enhancing its sporty appearance by giving the rear window a more compact, coupe-style look.

e.g. for the E-Class  
A212 793 0388



#### Side Sill Panels

The distinctive design of the side sill panels nicely compliments the finish of your E-Class. Consists of fins behind the front wheels, and fins in front and behind the rear wheels.

e.g. for the E-Class  
A212 690 0079



#### Stainless Steel Pedal Covers

Pedal covers in stainless steel with non-slip studs.

Applies to Automatic Transmission.  
A000 290 0501

Certain products apply to various model series.  
Please see your dealer for details.





#### Illuminated Door Sill Panels

Light-up your Mercedes-Benz in eye-catching style each time you open the front door with luminous white- or blue-colored "Mercedes-Benz" stainless steel door sills. Even the rear passenger doors receive upgraded but non-illuminated entrance panels.

e.g. for the E-Class  
A212 680 1435 9051



#### Door Handle Inserts

Help protect the finish from scratches and show an added touch of style with these easy-to-install chrome door handle inserts. Comes in a set of 4.

e.g. for the C-Class  
A204 760 1270



#### Chrome Hood Fins

This set of six Chrome Fins visually enhances the appearance of your vehicle after easily being attached to the hood.

e.g. for the M-Class  
A166 880 0082

Certain products apply to various model series.  
Please see your dealer for details.

## More allure

There is only room here to show a small selection of our range of Mercedes-Benz light-alloy wheels. The full range for your model series can be found at [www.mbusa.com/mercedes/vehicles/build](http://www.mbusa.com/mercedes/vehicles/build). Please ask your Mercedes-Benz partner about other wheels for your specific vehicle model.







#### Side Running Boards

Add a touch of form and function to your SUV with a set of running boards. The step surface has brushed aluminum panels with anti-slip rubber studs.

e.g for the M-Class  
A166 520 0031

Lighting Kit, e.g. for the M-Class  
A166 906 1801

Depending on model staggered wheel set up might be necessary. Accessory wheels are only for specified tire sizes and may require the use of wheel bolts other than those originally supplied with your vehicle. Failure to use proper equipment could result in an accident or vehicle damage. See your authorized Mercedes-Benz dealer for details and installation.

Not compatible with snow chains. Serious wheel and tire damage may occur if the vehicle is operated on rough or damaged road surfaces or upon encountering road debris or obstacles.

Mercedes-Benz light-alloy wheels are supplied without tires, hub caps, valve caps or wheel bolts. We recommend the use of Mercedes-Benz rim locks to help prevent theft.

E



#### 18" 5-Spoke Wheel

Finish: black, high-sheen  
Wheel: 8 J x 18 ET 45 / Tire: 235/40 R18  
A207 401 1602 7X23

E



#### 19" 5-Twin Spoke Wheel

Finish: grey, polished  
Wheel: 8.5 J x 19 ET 48 / Tire: 245/35 R19  
A212 401 4802 7X21

E



#### 18" 5-Spoke Wheel

Finish: black and polished  
Wheel: 8.5 J x 18 ET 48 / Tire: 245/40 R18  
A212 401 3402 7X23

C



#### 18" 5-Twin Spoke Wheel

Finish: grey  
Wheel: 7.5 J x 18 ET 47 / Tire: 225/40 R18  
A204 401 9102 7756

C



#### 17" 7-Spoke Wheel

Finish: chrome shadow  
Wheel: 7.5 J x 17 ET 47 / Tire: 225/45 R17  
A204 401 6902 7X29

C



#### 18" 5-Twin Spoke Wheel

Finish: sterling silver  
Wheel: 7.5 J x 18 ET 47 / Tire: 225/40 R18  
A204 401 2902 9709





#### 19" 10-Spoke Wheel

Finish: black and polished

Wheel: 8.5J x 19 ET 34.5 / Tire: 255/35 R19

A218 401 0802 7X23



#### 19" 5-Spoke Wheel

Finish: titanium silver

Wheel: 8.5J x 19 ET 34.5 / Tire: 255/35 R19 XL

A218 401 0402 9765



#### 18" Multispoke Wheel

Finish: titanium silver

Wheel: 8.5J x 18 ET 34.5 / Tire: 255/40 R18 XL

A218 401 0202 9765



#### 20" Multispoke Wheel

Finish: black and polished

Wheel: 8.5J x 20 ET 43 / Tire: 255/35 R20

B6 647 4529



#### 20" 5-Spoke Wheel

Finish: titanium silver, high-sheen

Wheel: 8.5J x 20 ET 43 / Tire: 255/35 R20

B6 647 4554



#### 19" 5-Twin Spoke Wheel

Finish: titanium silver, high-sheen

Wheel: 8.5J x 19 ET 43 / Tire: 255/40 R19 XL

B6 647 4556



#### [A-E] Wheel Hub Inserts

Add an attractive finishing touch to your wheels with these inserts. Various styles available (each sold separately):

[A] Black with chrome Three-Pointed Star

[B] Classic Star & Laurel design in black

[C] Classic Star & Laurel design in blue

[D] Sterling silver with chrome Three-Pointed Star

[E] Titanium silver with chrome Three-Pointed Star



M



#### 20" 5-Twin Spoke Wheel

Finish: palladium silver, high sheen  
Wheel: 9 J x 20 ET 57 / Tire: 265/45 R20  
A166 401 1802 7X19

M



#### 19" 5-Twin Spoke Wheel

Finish: titanium silver  
Wheel: 8.5 J x 19 ET 62 / Tire: 255/50 R19  
A166 401 1702 9765

GLK



#### 20" 5-Twin Spoke Wheel

Finish: black and polished  
Wheel: 8.5 J x 20 ET 45 / Tire: 235/45 R20  
A204 401 6202 7X23

GLK



#### 19" 5-Spoke Wheel

Finish: himalaya grey and polished  
Wheel: 7.5 J x 19 ET 47 / Tire: 235/55 R19  
A204 401 0204 7X21

SLK



#### 17" 10-Spoke Wheel

Finish: palladium silver, high sheen  
Wheel: 7.5 J x 17 ET 42 / Tire: 225/45 R17  
A172 401 1402 7X19

SLK



#### 18" 5-Twin Spoke Wheel

Finish: palladium silver, high sheen  
Wheel: 7.5 J x 18 ET 42 / Tire: 225/40 R18  
A172 401 1602 7X19

#### Tire Valve Stem Caps

A perfect finish touch, these chrome-plated valve stem caps dress-up any wheel. Comes in a set of four. Available in black, silver, or AMG (each sold separately).



#### Wheel Locks

Wheel locks can provide a subtle yet effective security touch to your Mercedes-Benz, helping to protect your light-alloy wheels and tires from theft. One set secures four wheels. Includes coded key. B6 647 0155



Today's two-tone wheels with high-sheen details present a special challenge when it comes to corrosion protection. The photograph shows the paint finish being inspected in the light booth.

Caring for your Mercedes-Benz light-alloy wheels

## All-round perfection

➔ High-quality light-alloy wheels not only underline the effortlessly superior character of your Mercedes-Benz – they also have more of a visual impact on your vehicle's appearance than virtually any other product. As such, they deserve special protection.

We have done what we can to ensure that our wheels retain their value: at least 4 layers of paint, applied under strictly monitored conditions and intensively tested, offer optimum prospects for a long wheel life.

But there are things that you can do too:

- ▶ Regularly check tire pressure.
- ▶ Do not grease or oil wheel bolts.
- ▶ Maintain the correct wheel tightening torques, as specified by Mercedes-Benz.
- ▶ Avoid using rough-surfaced or hard sponges to clean the wheels.
- ▶ Regularly apply special waxes.

Tip: the Mercedes-Benz care system is tailored to your wheels' paintwork. Unlike aggressive cleaning agents our products do not attack the outer layers of paint.



## More value

Life is rich and varied – and we all have different needs. It was with these different needs in mind that we developed our range of genuine accessories. The diverse range offers the perfect solution for a whole series of situations – carefully conceived and specially tailored to your vehicle. Our genuine accessories also help you to preserve the value of your Mercedes-Benz – all of the products shown here help ensure that fewer traces are left on your vehicle, retaining its resale value. When it comes to accessories for your Mercedes, it is worth purchasing the genuine product.



### Cargo Area Tray

Protect the floor of your trunk with this durable, easy-to-clean tray with 2" sides. Formed to fit the contours of your trunk.

Shown with optional Cargo Box.

e.g. for the E-Class  
A212 814 0141

### Cargo Box

Use a cargo box to support and keep in place tall objects, such as grocery bags.

A000 814 0041





#### Cargo Area Container

The high sidewalls offer all-round protection. The overall shape is optimally tailored to the load area, ensuring that transporting liquids is not a problem. The cargo container is light in weight, making it even easier to insert and remove.

e.g. for the M-Class  
A166 814 0141



#### Cargo Divider Bars

Partition your load compartment to suit your requirements and prevent the contents from sliding around. The brackets can be freely positioned along the outer edges of the load floor and the telescopic bars provide a secure hold.

e.g. for the M-Class  
A166 860 0034



#### Load Sill Protector

Designed to prevent the bumper from being scratched and to protect clothing when loading the trunk or a Mercedes-Benz Roof Box. The black Load Sill Protector can be connected to the Cargo Area Tray or reversible mat with hooks and Velcro strips. Can be folded easily for storage.

A212 680 0246

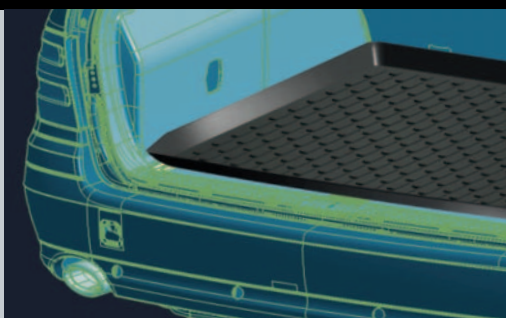


#### Comfort Box

The Comfort Box provides a practical and isolated storage area for your personal items while in trunk. While not in use, the Comfort Box easily folds up to give you maximum space of the trunk.

e.g. for the E-Class and the CLS-Class  
A212 680 0010 9051

Certain products apply to various model series.  
Please see your dealer for details.



Millimeter precision isn't good enough: genuine accessories are designed with Computer Aided Design (CAD) data from Vehicle Development, for the most precise fit possible.

What is it that makes that crucial difference?

## Originals for the original

➔ Every Mercedes-Benz is subjected to rigorous testing before it can earn its star logo. Our tests usually significantly exceed statutory requirements and they apply to Mercedes-Benz genuine accessories too.

Our products' precision fit, quality craftsmanship and safety standards meet the highest of demands. Our accessories developers work closely with their colleagues in the vehicle division. They often work next-door to one another, making collaboration easier and ensuring that our design engineers have

at their disposal the expertise and testing technology that only a major car manufacturer can offer: crash test facilities, cutting-edge diagnostic procedures and a wealth of specialist knowledge.

The result is a range of technically mature products—perfectly tailored to your car, perfectly adapted to the on-board electronic systems and, in many cases, simply fun. After all, developers have one thing in common: they love perfect cars!



#### **Carpeted Floor Mats**

Wherever your journey takes you—these Carpeted Floor Mats reliably protect your car's interior from dirt, damp and wear. The mats are manufactured from high-quality pure polyamide velour and meet the highest of standards: dirt-repellent, antistatic, flame-resistant and, thanks to the non-slip backing, both safe and adaptable.

e.g. for the E-Class  
A212 680 1848



#### **All-Season Floor Tray**

Designed specifically to match the precise contours of the floor of your M- and GL-Class, these quality flexible plastic trays feature high sides to contain dirt and liquids for the best possible carpet protection.

BQ 674 0012



#### **All-Weather Floor Mats**

All-Season Floor Mats protect the interior. Rainy weather, slush, a walk in the woods?

Hardwearing rubber mats help keep the footwells clean and dry. The precision fit provides optimum coverage for the sensitive floor covering.

e.g. for the M-Class  
A166 860 1048 9051



#### **Cargo Nets**

Versatile and convenient, these strong and durable nylon nets help you to more safely secure objects in your trunk compartment. The nets are easily installed and removed on the floor, rear, and side of your C-Class trunk. Each net is sold separately.

e.g. for the C-Class  
A204 868 0074



#### **Flexible Cargo Stabilizer**

This durable nylon and Velcro-clad piece of foam offers firm lateral hold and helps protect objects from sliding around under normal driving conditions. Measures 36" x 2" x 2".

B6 664 8220

shown with  
**Collapsible Shopping Crate**  
A000 814 0041



#### **Wire Mesh Dividers**

Robust metal grilles, designed to shield the passenger compartment from items in the load area. Simple to fit to designated points on board. Partition and divider available separately. Divider can only be used in conjunction with partition.

e.g. for the M-Class  
A166 860 0042

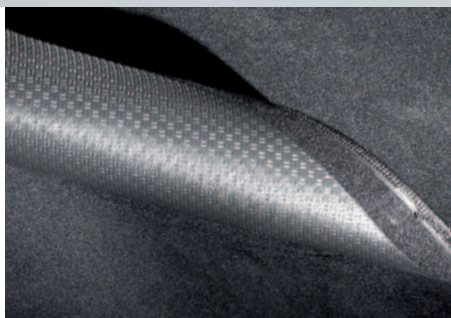




#### Anti-Slip Mat

Prevents slipping of items placed in the trunk. Tailored to perfectly fit dimensions of the cargo area of your vehicle. Made from oil and acid-resistant black polyester. Easy to clean.

e.g. for the C-Class  
A204 684 0005



#### Reversible Cargo Mat

This non-slip mat pulls double duty to protect the interior carpet of your Mercedes-Benz with a smooth, firm side and a soft fabric side. Fabric side available in black, grey or beige. Easily converts to one of four configurations. Constructed of highly durable 100% polyester.

e.g. for the M-Class  
A166 680 0146



#### Coat Hanger

Robust coat hanger made from chromed metal. Easy to attach to front head rests. The ideal way to transport items of clothing without creasing them. For safety, please remove when not in use.

A000 814 0132



#### Mud Flaps

Designed to match the contours of your Vehicle, these durable formed black plastic mud flaps will help protect your vehicle from road debris, rock and salty road spray. Available in pairs for the front and the rear.

front set, e.g. for the M-Class  
A166 890 0078 (Vehicles with running board)  
A166 890 0478 (Vehicles without running board)  
rear set, e.g. for the M-Class  
A166 890 0278 (Black)



#### Quickpark

The Quickpark parking aid from Mercedes-Benz is automatically activated when reverse gear is engaged. Ultrasonic signals are bounced back off obstacles in their path. An audible warning signal indicates the distance between the vehicle and any obstacle. Quickpark distance sensors can be painted to match vehicle color.

e.g. for the E-Class (W211)  
B6 782 3968



#### Battery Trickle Charger

For those extended periods when your Mercedes-Benz has not been used, this charging device will ensure that your battery is fully energized when you need it.

A000 982 0221



#### UVS-100™ Sunshade

Think of it as SPF 100 for your dashboard. Helps prevent sun damage to the interior while keeping the inside cooler. Practical and durable. Made of reflective fabric laminated to a foam core.

e.g. for the SL-Class  
BQ 667 0040



#### Car Cover

This UV-resistant 3-layer cover helps protect the finish of your Mercedes-Benz from the elements. Made from breathable Noah® fabric, it combines an excellent fit with durable construction. (Lock and cable available separately.)

e.g. for the M-Class  
BQ 660 0089

Certain products apply to various model series.  
Please see your dealer for details.



## More safety

Optimizing safety has always been at the heart of research and development at Mercedes-Benz. Over the years a variety of innovations from our laboratories have benefited all car drivers: the crumple zone, ABS, the airbag and many other developments have become standard features on today's roads.

Our responsibility, of course, does not stop when it comes to protecting what is most dear to us — our children's well-being. Thanks to our variety of child safety seats, your children can feel just as safe on the road as you do.





#### "KidFix" Child Seat

Booster seat for optimum side-impact protection, with height-adjustable backrest. The "KidFix" seat is secured using the 3-point seat belt and ISOFIX attachment points. This seat is also BabySmart\* compatible. For children between the ages of around 3½ and 12.

A000 970 1500 9G43



#### "DUO Plus" Toddler Seat

Designed to ensure excellent protection for children approximately 1 to 4 years of age. Features include single-handed adjustment to change from the upright position to the reclined and sleeping positions, height-adjustable shoulder belt, back area ventilation channels, and an additional tether for securing the top section. Fabric cover is removable for washing. This seat is LATCH\* and BabySmart\* compatible. B6 686 8219



#### "BabySafe Plus" Infant Seat

Deep, molded rear-facing seat design provides extra protection and padding designed to help protect very young children up to 29 lbs. or 31 inch long. Features integrated head support, adjustable sun/wind canopy, comfortable 3-position carry handle, and variable recline angle adjustments. Light grey fabric cover is removable for washing. Can be used in the vehicle with or without the base. Approved for use in commercial aircrafts. Weighs less than 8 lbs. This seat is BabySmart\* compatible and LATCH\* compatible with provided LATCH belt\*. B6 686 8214



#### Teddy Bear

Brown plush bear, with polyester fleece scarf. Washable with cold cycle. Vintage Mercedes-Benz logo printed on scarf. Size approx. 14".

B6 695 5494

*\* Please consult your owner's manual or dealer for proper installation of your child seat.*

*BabySmart/OCS Safety Information: Most Mercedes-Benz vehicles from MY 1998 through 2003, select models from 2004 through 2006, and current G-Class vehicles are equipped with BabySmart™. Mercedes-Benz vehicles equipped with BabySmart™ have a device that recognizes the presence of BabySmart™-equipped child seat when properly installed in the front passenger seat and deactivates the passenger front air bag (check your vehicle's Operator's Manual or labels located on the sides of your dashboard to verify).*

*All current Mercedes-Benz models are equipped with the Occupant Classification System (OCS) (with exception of the G-Class) which is designed to*

*turn off the front passenger's front airbag when the system senses the weight of a typical child 12 months old or less plus the weight of a standard child restraint. See vehicle's operators manual for important additional information on this system and further information regarding the transportation of children heavier than a typical 12 month old.*

*All Mercedes-Benz child safety seats meet or exceed U.S. Department of Transportation standards. They are also suitable for use in older vehicles that do not have integrated LATCH (Lower Anchors and Tethers for Children) attachment points. Visit the National Highway Traffic Safety Administration's website at <http://www.NHTSA.gov> for additional information about child safety seat laws and proper use.*

No compromises

## Safety first!

➔ In an accident children who are not secured are seven times more at risk of being injured than children who are protected by retention systems. This statistic explains why we are constantly working on improving the protection of your youngest passengers.

Accident research and accident statistics show that, as a result of their anatomy, children need special retention systems and that these have to meet different requirements, depending on the child's age group,

size and weight. As a result, Mercedes-Benz offers a selection of child seats which are tailored to the physical attributes of children in each age category.

We also offer the innovative features you expect from Mercedes-Benz: for example BabySmart™, which uses a responder signal in the child seat to deactivate the front passenger airbag to protect your youngest passengers when they are travelling in the front.



Tough: vehicles and test dummies aren't treated gently in our crash test facilities. The result: valuable findings on how to optimize child protection.



## More adventure

Driving a Mercedes-Benz isn't just about getting from point A to point B. You expect more of your Mercedes.

If you are looking for a car that can play a key role in your various leisure activities, you've come to the right place: whether you're out and about with your family, heading to the mountains with your bike or looking for a secure way to transport your skis, genuine accessories offer the ideal solution for every occasion.

For "more" adventure right from the start.



### Bicycle Rack

This rack securely holds a single bicycle and attaches to the Roof Rack Basic Carrier (sold separately). Up to three bicycle racks may be supported on the Roof Rack Basic Carrier. Bicycle can be mounted on the rack prior to installation on Basic Carrier. Spiral Lock sets available to help secure your bicycle while being away from your Mercedes-Benz (sold separately).

A000 890 0293



### Bicycle Spiral Lock, 3 mm, Single

Peace of mind when you're out and about. The multifunctional coil lock is designed to protect your property and deter thieves. It is available in a 3 mm or 6 mm diameter with a matching holder. Available singly or as a set of 2 or 4 with a common key. The coil lock can be used to secure both rack and bicycle.

B6 685 1712





#### Ski & Snowboard Rack, Standard

This rack holds up to four pairs of skis or two snowboards. Requires Roof Rack Basic Carrier (sold separately).

B6 685 1702



#### Ski & Snowboard Rack, Deluxe

This rack holds up to six pairs of skis or four snowboards and features a pull-out function that makes it easier for loading and unloading without the need to reach across the roof of your Mercedes-Benz. Requires Roof Rack Basic Carrier (sold separately).

B6 685 1703



#### Trailer Hitch

Take advantage of your M-Class' considerable hauling capacity with our Class III trailer hitch, capable of towing up to 5,000 lbs. Designed especially for Mercedes-Benz with a corrosion-resistant surface treatment.

for the M-Class  
A166 310 0195

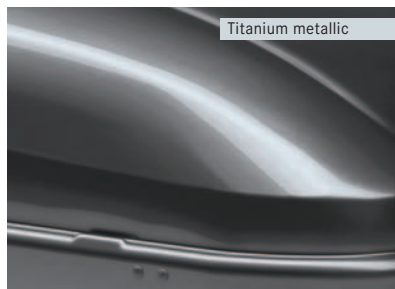




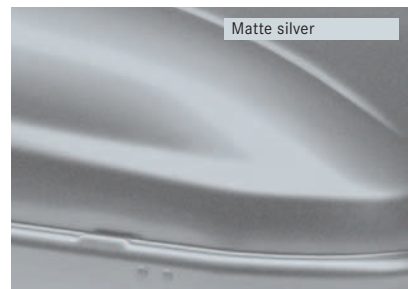
Black metallic



Silver metallic



Titanium metallic



Matte silver



#### Roof Cargo Containers

Create additional space for sports equipment and luggage with one of our aerodynamic, high-quality roof containers designed to nicely complement your Mercedes-Benz. Constructed of lightweight, yet exceptionally durable, impact-tested thermoplastic material. Features pressurized struts for easy lid operation and a security lock. Small model holds 11.5 cubic feet. Large model holds 16 cubic feet. All models have a maximum load capacity of 110 lbs.

Requires Roof Rack Basic Carrier (sold separately).

Large Container, available in

black metallic

A000 840 3962

silver metallic

A000 840 3762

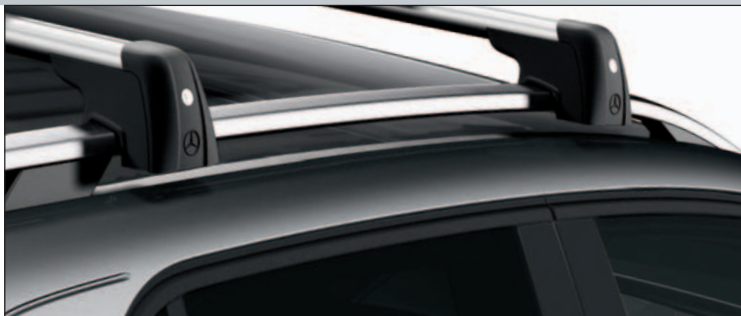
Small Container, available in

titanium metallic

A000 840 4262

matte silver

A000 840 4362



#### Roof Rack Basic Carrier for SUVs

Our basic carrier is an essential component for attaching a wide assortment of items to the top of your Mercedes-Benz. After easy installation, you can securely attach bicycles, ski and snowboard racks, or a cargo container. (Racks and containers sold separately.)

Durable nylon bag also available and sold separately for storing your Roof Rack Basic Carrier.

e.g. for the M-Class  
A166 890 1393



#### Luggage Set for Roof Cargo Containers

The luggage set is precisely tailored to the internal dimensions of the roof box. Practical: bags are numbered to make them easier to arrange. Hardwearing, water-repellent material. Set is universal. Additional shoulder straps make bags easier to carry. Sporty look plus elegant Mercedes-Benz design.

for small container  
A000 890 0411

for large container  
A000 890 0511



#### Roof Rack Basic Carrier for Sedans

The roof rack basic carrier offers discrete elegance and optimum comfort. Tested to exacting Mercedes-Benz standards, the bars are simple to fit and offer a secure hold and optimum aerodynamics. The carriers are lightweight and robust, and the locking plastic end caps help prevent theft.

e.g. for the C-Class  
A204 890 1393



#### Ski Rack Insert

For Mercedes-Benz roof cargo container, small

A secure hold for up to three pairs of skis.

A000 840 4718

#### Ski Rack Insert

For Mercedes-Benz roof cargo container, large

Securely holds up to 5 pairs of skis in the large roof cargo container (sold separately). Precision-tailored to the internal dimensions of the container.

A000 840 4818



The wind tunnel shows how shape and function work together: Aerodynamic shapes derived from nature lower air resistance to a minimum and match the design of your Mercedes-Benz.

Aerodynamic and acoustic optimization in the wind tunnel

## Safety – elegantly packaged

➔ Like a second trunk or load compartment, Mercedes-Benz roof cargo containers add several cubic feet to your vehicle's transport capacity and offer space for a vast amount of luggage—including your skis after a day on the slopes.

Like all genuine accessory products, our cargo containers are subjected to extensive testing—on endurance tracks and vibrating tables, in crash facilities and, not least, in the wind tunnel. The aerodynamic and acoustic properties are optimized by altering the angle settings and testing at different speeds, up to the top speed for

the vehicle model in question. Both sets of properties are of direct benefit to you: fuel consumption is lower than with untested rival products, and irritating wind noise resulting from the combination of vehicle and roof box is eliminated.

And the fact that practical functionality can also look elegant is underlined by the Mercedes-Benz design, precision-tailored to your vehicle.





## More style

A fan of Mercedes-Benz cars? Then you'll love the Mercedes-Benz Collection. The exclusive watches, personal accessories, gift ideas, fashion and sports items were developed and manufactured with the same passion and attention to detail as the range of vehicles from Mercedes-Benz. And that's why they also feature the star logo.

The products that make up the Mercedes-Benz Collection can also be found in our online shop at [www.accessories.mbusa.com](http://www.accessories.mbusa.com)



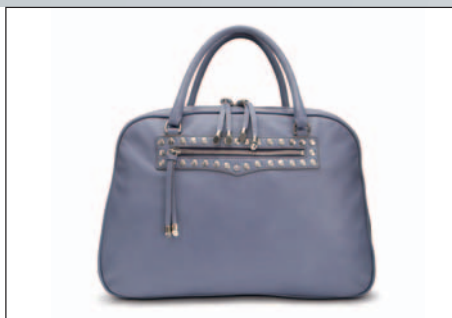
#### Cashmere Blend Scarf

Made of 55 % cashmere and 45 % acrylic.  
Size 25" x 72".

Available in

Charcoal  
A962 999 0347

Mocha  
A962 999 0348



#### Handbag

Lilac-colored Italian leather. Stud trim. Zipped main compartment. Mobile phone pocket and other inside pockets, one zipped. Strap with snap hook for attaching e.g. the small cosmetics bag. Mercedes-Benz star logo stud on side. Embossed leather label inside. Made in Italy. Size approx. 14" x 10" x 6".

B6 695 0987



#### Women's Ceramic Watch – Black/Silver

Ladies Mercedes-Benz watch features a 1.4" polished stainless steel case with fixed top ring with black enamel and 24 crystals. Water resistant to 10 ATM. Black ceramic and stainless steel bracelet. Swiss quartz movement with date calendar. Produced by Tourneau, exclusively for Mercedes-Benz.

A962 999 0535



#### Women's White/Blue Silk Scarf

Maritime designed scarf, combined with motifs such as chains and anchors. 100 % Italian silk. Size approx. 24" x 24".

B6 695 0805



#### Samsonite Suitcase Spinner 66

Samsonite medium suitcase. Black nylon/polyester outer with pleats. Four strong wheels, fixed TSA padlock, a separate garment bag. Dimensions: 18¾" x 26½" x 11½" – 12½". Features silver-colored star rivets, silver Samsonite badge. By Samsonite for Mercedes-Benz.

B6 695 1394



#### Samsonite Duffel Bag

Duffel bag by Samsonite with large main compartment, 2 small side pockets, 2 exterior pockets with inner compartments for keys, cell phone, etc. and padded shoulder strap. Dimensions: 22" x 12" x 12". Silver-colored star rivets.

B6 695 1396



At the heart of the Mercedes-Benz Collection lies the sheer pleasure of stylish ideas and the passion of bringing them to life.

How is that special quality created?

## From inspiration to reality

➔ Creativity needs inspiration. And Mercedes-Benz vehicles provide a virtually inexhaustible source of inspiration for the Collection.

But creativity must go hand-in-hand with quality to ensure that the joy each product brings is one that lasts. Each product in

the Collection is subjected to a variety of tests in which material quality, functionality and safety are tested.

After all, a wine stopper based on the design of the gear knob of the legendary SL 300 must be both stylish and reliable — just like its larger counterpart.





#### Compact Umbrella

Material in glen plaid stretches across a sturdy aluminum frame. High-quality 'windproof' design with FARE® Flexbar ribs provides extra stability. Automatic opening and closing mechanism. Historic star logo is laser etched into a smooth wooden handle and printed on umbrella and matching cover. Measures 21½" in diameter when open.

B6 695 5493



#### AMG Women's Wind Jacket

Stylish wind jacket for women features a white belt with silver buckle, gray hood stored in the collar and four outside pockets. This wind resistant, lightweight jacket also includes a silver mesh lining inside, cuffs with reflective Velcro hem and a drawstring. AMG logo in the neck and on the left chest.

Sizes XS-XL

B6 695 7761-7764



#### Blue Striped Tie

Blue tie patterned with light and medium blue stripes, handmade, fabric: 100% silk.

B6 695 0093



#### Classic Race Chronograph Watch

Watch with stainless steel case. Dark brown dial with sunray polish featuring vintage Mercedes-Benz star logo. Red detail on stop-watch button and red second hand. Ergonomic fine-toothed rotating bezel, screw back, convex mineral crystal. Dark brown leather strap, embossed with chequered design. Citizen/Miyota movement.

B6 604 1435



#### Children's Backpack

Red. 100% polyester. Age 5+. S-shaped shoulder straps. 3M reflectors. Padded back section. 2 mesh side pockets. Pale grey embroidered logo on front. Deuter logo print on shoulder strap. Size approx. 17" x 9" x 7". Weight approx. 0.93 lb. By Deuter for Mercedes-Benz.

B6 695 0048



#### Thermo Tumbler

Fully insulated cup with brushed steel and high-quality plastic. Thumb-slider top.

A950 999 1111



#### Men's Leather Business Wallet

Black Italian calf leather business wallet, 2 note compartments, 1 coin compartment, space for at least 8 credit cards, Mercedes-Benz star rivets, dimensions: 5" x 4" x ¾".

B6 695 5145



#### Money Clip

Matt stainless steel with high-sheen polished sides and black border. 3D star logo on front. "Mercedes-Benz" lettering on back.

B6 695 0141



#### Leather Padfolio

Leather padfolio with zippered closure features a file with gusset for storing documents, as well as several other interior pockets for receipts, business cards, etc. Includes a pocket for your cell phone as well as a place to store your key fob or a USB drive. Dimensions: 9¼" x 13".

B6 695 5144



#### Wine Stoppers

Inspired by shifter knobs on Mercedes-Benz classic cars, each wine stopper is for use with a different wine—red, rose, white and of course, champagne. Set of four. Tastefully packaged.

B6 695 5298



#### Anthracite Rollerball Pen

Anthracite metal rollerball pen with twist-off cap and lasered patterns. 3-D star logo on the cap. Made in Germany.

B6 695 5142



#### Swarovski Key Ring

Silver-colored. Mercedes-Benz star logo, trimmed with CRYSTALLIZED™ - Swarovski Elements. Mercedes-Benz engraved on split ring.

B6 695 2811



#### Classic 300 SL Silver Gullwing Pedal Car

Designed for our younger drivers, this popular one seater gives children the excitement of driving their own roadster. Sturdy plastic body. Pedal powered. For children ages 2 to 5 years old.

B6 604 5717



#### Ladies Sunglasses

Chocolate brown plastic frame with leopard pattern inside. Leather-effect case. Leopard print cleaning cloth. Badge featuring Mercedes-Benz logo on arm.

B6 695 5170



#### Laptop Sleeve

Black polyamide. For laptops up to around 15.6". Can be attached to laptop. Rubberized logo print. Samsonite print. By Samsonite for Mercedes-Benz.

B6 695 1398



#### AMG Men's Cap

Black. Seven-panel baseball cap with carbon-like material on both sides of the bill. White AMG logo, fabric buckle with black, anodized clip and embossed AMG logo. Material: 100% Polyester; Lining: Dewspo.

B6 695 7772



#### Set of aluminium coasters

Aluminum with matt stained anodized finish. Displays four distinct historic racing motifs. Size 100 x 100 mm. Set of four.

B6 695 5293



Mercedes-Benz USA, LLC  
One Mercedes Drive  
Montvale, NJ 07645  
1-800-FOR-MERCEDES  
MBUSA.com

© 2012 Mercedes-Benz USA, LLC  
A Daimler Company

All illustrations and specifications contained in this brochure are based on the latest product information available at the time of publication. Actual product offerings may vary from those shown or may be subject to availability delays or discontinuance. Mercedes-Benz reserves the right to make changes at any time, without notice, in colors, materials, equipment, specifications and models. Any variations in colors shown are due to reproduction variations of the printing process. Illustrations may include test situations. Some vehicles may be shown with non-U.S. equipment. Vehicles are shown with optional equipment. Unsecured cargo can become hazardous in a collision. Always secure cargo using the floor-mounted tie-down hooks. Cargo nets and organizers are not intended to prevent objects of excessive weight and bulk from sliding or rolling in the event of a collision or sudden stop. Always drive with caution when driving with cargo. Certain accessories may require professional installation and/or additional components to complete the installation in your vehicle. Please consult your authorized Mercedes-Benz dealer for specific information about automotive accessories. Speak with a representative at your local authorized Mercedes-Benz dealership for current pricing on Genuine Mercedes-Benz Accessories. Visit [accessories.mbusa.com](http://accessories.mbusa.com) to shop online or call 1-800-FOR-MERCEDES (367-6372) for more information.

Printed in the Federal Republic of Germany  
ACC-12-MOREMB40000