



Mercedes-Benz

The best or nothing.



Fall/Winter

2011 Lifestyle Collection
Items designed exclusively for Mercedes-Benz



luxury

jewelry + timepieces



Custom Mercedes-Benz Star Necklace

For when you're feeling "sparkly"! Beautiful 7/8" sterling silver Star charm with 24-1pt CZs attached to a 18" rope necklace with lobster claw closure.

A962 999 0514

\$210.00

Custom Mercedes-Benz Star Cable Bracelet

Year-round bling! Gorgeous 7/8" sterling silver Star charm with 24-1pt CZs attached to a 7 1-2" heavy cable bracelet with lobster claw closure.

A962 999 0515

\$350.00



MB Sport Watch

Mens 44mm polished stainless steel case. Black ionic-plated fixed bezel. Silver pattern dial. Date calendar window with frame. Luminous hands and red sweep second hand. Rubber strap with 6 brushed links. Swiss quartz movement with date calendar. Water resistant to 165 ft. Produced exclusively by Tourneau for Mercedes-Benz.

A962 999 0379

\$163.00

Leather Strap Chronograph Watch - Black

Mens 42.5mm polished stainless steel case. Black dial with silver Arabic numbers. Tachymeter bezel ring, silver pattern inner dial and silver subdials. Swiss ETA quartz chronograph movement with date calendar at 4 hour position. Black padded leather strap with black top stitching. Water resistant to 330 ft. Produced exclusively by Tourneau for Mercedes-Benz.

A962 999 0376 - Black

\$266.00



*Pictured on opposite page:

A962 999 0377 - Ladies Silver Bracelet Watch \$214.00

A962 999 0378 - Ladies Two-Tone Bracelet Watch \$214.00

workspace & accessories

Cable Closure Key Ring

Bold blue key tag with twist-on tab secured cable. Mercedes-Benz engraved on backside of medallion.

A962 999 0236

\$14.00

Vehicle Badge Key Ring GL-Class

Chrome-covered brass replica of vehicle badging.

B6 695 7508

\$27.00

Classic Compact Mirror

Silver toned metal case adorned by a vintage, bright color advertisement motif on front.

Standard and magnifying mirrors. Mercedes-Benz historic star logo stamped on case back.

Approximately 2 ½ x 3 ½ inches (6 x 9 cm).

B6 695 5294

\$24.00

25 oz. Matte Water Bottle

Water bottle holds 25 oz. and features stainless steel wall with matte rubberized finish for better grip. Push button latch, flip top lid that incorporates a flip handle for easy carrying.

A962 999 0512

\$22.00





Cuff Links - Grill Pattern

Silver cuff links with emulated grill design.

A962 999 0313

\$18.00

Vienne Rhine

Pen has a beautiful matte finish with rubber grips for comfort. Black ink.

A962 999 0477

\$8.00

Vehicle Badge Key Ring ML-Class

Chrome-covered brass replica of vehicle badging.

B6 695 7509

\$27.00



Lighter

Front side is matte silver-colored metal. Reverse has brown, easy-grip rubber coating.

B6 787 6132

\$20.00

Stein

16 oz. mug has a flared base for added stability with an oversized handle for comfort. Dimensions: 5.375"h x 3.3" diameter.

A962 999 0476

\$18.00

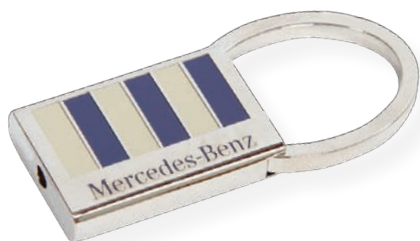
Draw String Pouch

Cleaning cloth and drawstring pouch all in one. Dimensions: 7" x 4" Sunglasses sold separately.

A962 999 0479

\$7.50





Rugby Striped Key Holder

Custom, rugby styled key holder is made of zinc with a steel 16mm split ring.

A962 999 0391

\$19.00

I-Phone Case

Made with technical leather and stretchy nylon material on the sides. Case has a star-embossed front. **While supplies last.**

B6 695 0887

\$61.00

Flower Key Ring

Custom, modern flower design with glass center and silver star key charm.

A962 999 0317 – Blue

A962 999 0316 – Lime

A962 999 0315 – Orange

A962 999 0314 – Raspberry

\$18.50

Vehicle Badge Key Ring E-Class

Chrome-covered brass replica of vehicle badging.

B6 695 7503

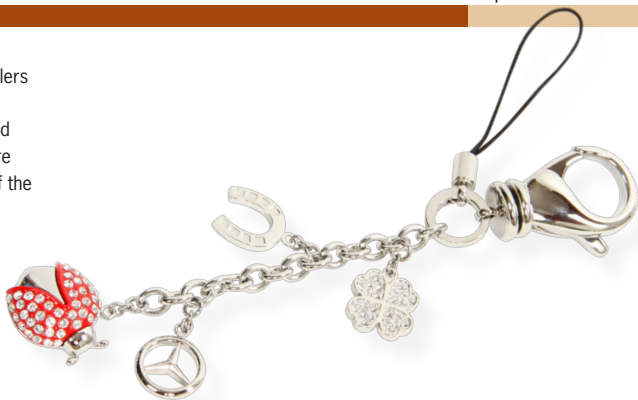
\$27.00

Mobile Phone/Handbag Key Ring

Split key ring/carabiner hand bag charm with trailers featuring a lucky clover pendant with Swarovski stones, a horseshoe, the Mercedes-Benz star, and a larger ladybug with red wings. The red wings are also decorated with Swarovski stones. Length of the keychain including carabiner: about 14 cm.

B6 695 2812

\$65.00

**Carlton Pen**

Brass pen with fashionable carbon fiber barrel and twist action mechanism. Black ink.

A962 999 0447

\$14.00

**Flip Top Case - Wood**

Hard clam shell case in woodgrain.

Dimensions: 6" x 2.75" x 1".

Sunglasses sold separately.

A962 999 0478

\$20.00

**Leather Notebook**

6"x8" hard cover leather journal. Includes cream lined pages with a satin ribbon marker. Logo debossed in lower right corner.

A962 999 0187

\$49.00



AMG – Motorsport – Formula 1®



Women's Team Polo

Black ladies Polo with sponsor logos.

Material: 100% Coolmax polyester piqué.

B6 799 5026 – XS

B6 799 5027 – S

B6 799 5028 – M

B6 799 5029 – L

B6 799 5030 – XL

\$109.50

Men's Team Polo

100% polyester Coolmax pique polo shirt with all sponsor logos. Large Petronas logo on the back.

B6 799 5016 – S

B6 799 5017 – M

B6 799 5018 – L

B6 799 5019 – XL

B6 799 5020 – 2XL

\$122.50

Nico Rosberg Cap

#8 button emblem on bill and Mercedes-Benz logo printed in front. MercedesGP logo embroidery on one side/Henri Lloyd logo on the other side. "Nico Rosberg" embroidery on back with MercedesGP Petronas logo on clasp.

Material: 100% polyester.

B6 799 5989

\$30.00

Men's Motorsport Fashion Cap

White cap with black print. The design is "I love motor racing," with the the helmet standing for "love". Listed in the helmet are typical Motorsport terms (speed, poles, etc.).

Material: 100% polyester outside; Lining:

100% cotton. **While supplies last.**

B6 695 2800

\$12.50

Formula 1® Lanyard

100% black polyester lanyard with snap hook, safety lock in the neck, and the MERCEDES GP Petronas logo.

B6 799 6033

\$15.50

Motorsport Sunglasses

Sporty sunglasses worn by all drivers in the 2011 DTM season. Mercedes-Benz star pin on the bracket. Glasses: UV 400 protection. Includes a white lens cleaning cloth embossed with Mercedes-Benz logo and hard case with Mercedes-Benz star.

Made in Italy.

B6 799 5983

\$198.50

Swiss Army Golf Tool

Handy item on the course, it features a one-hand locking divot repair tool, a ball marker, tee punch with groove cleaner, bottle opener, nail file, tweezers, toothpick, scissors and small blade.

A962 999 0466

\$65.00

Specialized Bike Bottle

Designed technology for cyclists, this 22 oz. bottle delivers more water when you need it via the exclusive MoFlo cap. Bottle is easy to open, yet leak proof when closed. Locks down for transportation and for mixing powdered drinks.

A962 999 0467

\$10.00

Golf Tees (extra long) - pk of 50

Pack of 50 extra long (2.75") golf tees in corporate logo design.

B6 799 7499

\$3.50



sport

Nike Classic Feel Golf Glove

Premium cabretta leather tanning process provides a soft, supple feel along with excellent fit, grip and durability. Perforated fingers provide enhanced breathability and a better range of motion. New angled comfort tab design gives a superior ergonomic fit.

A962 999 0444 - Left Hand

A962 999 0445 - Right Hand

\$25.75

Bicycle Jersey

Show your Mercedes pride while riding around! High quality Euro mesh fabric wicks away moisture for superior comfort during your longest rides. Approx. 19" long with 3/4 hidden zipper and three convenient rear pockets for storing essential gear. Available M- 2X.

A962 999 0458

\$95.00



kids



*To view the entire Gund family visit the Mercedes-Benz Lifestyle website.

Girls Bling T-shirt

Bling for all ages! Cute shirt features incredibly soft and durable 95/5 ringspun cotton spandex with rhinestone Star on full chest.

A962 999 0491

S / M / L / XL / - \$24.00

Snowey

This cute little cat is 10" and dressed in a pink t-shirt with the stacked logo on the back of the shirt.

A962 999 0493

\$32.00



Hoagie

Very huggable bear is wearing a navy blue sweater with stacked logo on chest.

A962 999 0492

\$50.00

Duffy

Adorable from the top of his floppy ears to the tips of his toes, this 18" puppy is styling a black t-shirt with the stacked logo on the chest.

A962 999 0494

\$30.00



Fuzzy

Ring in the holidays with this 13.5" bear sporting a red t-shirt with horizontal logo on the chest & Santa cap!

A962 999 0495

\$35.00

Kids SLK Plastic Push Car

Kid's SLK vehicle made of sturdy plastic. Faithful Mercedes-Benz multi-spoke rims. Seating capacity for one child and maximum weight of approximately 75 lbs. Assembly required. For ages 1 and up.

B6 696 1206

\$109.00



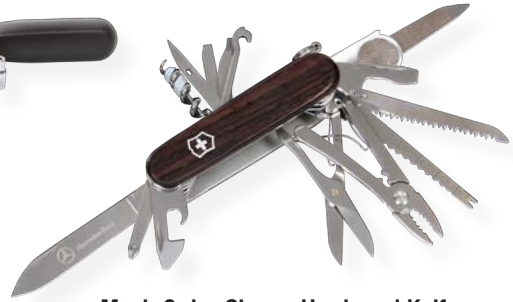
leisure

**Tool Kit**

Red and black case holds 55 tools. Tools include, cutters, precision screwdrivers, tape measure, ratchet screwdriver and spinner sockets. Size approximately 22x11x11cm.

B6 787 6134

\$46.00

**Men's Swiss Champ Hardwood Knife**

Great tool for all your indoor and outdoor jobs. Some of the tools available are a large blade, small blade, can opener with small screwdriver, bottle opener with large screwdriver & wire stripper. scissors, tweezers and many, many more (23 in total). Dimensions: 3.5" L x 0.5" W.

A962 999 0471

\$178.00

Locker Duffle

This roomy duffel is great for weekend travels or going to the gym. Includes custom toiletry dividers in the outside pocket. Dimensions: 19.5" L x 10" H x 9.5" W.

A962 999 0508

\$70.00

**54 qt. Coleman Steel Belted Cooler**

This COLEMAN® 54 qt. steel belted® cooler features a solid steel latch, stainless steel handles with rubber comfort grips, durable base and lid liner and rustproof, leak-resistant channel drain.

Dimensions: 24.25" x 16.75" x 16.75".

A962 999 0482

\$255.50

women's fashion



Ella Sweater Fleece Jacket

This versatile and cozy full-zip jacket has a sweater-knit face with a fleeced interior, providing warmth without the bulk. Mandarin collar and curved cuffs provide a truly unique style. Contoured panels for a tailored fit. Star logo on left bicep.

A962 999 0472

S / M / L / XL – \$85.00

Ladies Newsboy

Cute ladies cap features thin wale corduroy with a stretch fit closure. One size fits most. Word brand embroidered on visor; Star on left panel.

A962 999 0464

\$18.00

Ladies Wrinkle Free Shirt

A great shirt for home, office or a night on the town! Utilizes easy care material for a wrinkle free finish. Features a hidden button-down collar and front waist, bust and back waist darts for a feminine silhouette. Shaped clean finished hem with side gussets for comfort. Star logo embroidered on left cuff.

A962 999 0473

S / M / L / XL – \$66.00



Rhinestone T

Stylish tee made with incredibly soft and durable 95/5 ringspun cotton spandex fabric for fit and comfort. Horizontal logo in rhinestones on full chest.

A962 999 0489 – Red

A962 999 0487 – Royal

A962 999 0488 – Black

S / M / L / XL – \$28.00

SLK Nail Polish

Nail polish in original vehicle paint color (red zircon) in a black cardboard box; 8 ml.

B6 695 7803

\$11.50

***To view all available Mercedes-Benz nail polish colors visit the Mercedes-Benz Lifestyle website.**

Claire

A perfect way to update your wardrobe. This fleece jacket features a long 1/4 zip and big buttons to be worn open or closed as the situation demands. Stylish contrast binding makes this fashion-forward piece a must for everyone! Star logo on right hip.

A962 999 0483

S / M / L / XL - \$125.00

Kimmei

This tunic features a very feminine neck line and longer body length with extra long sleeves. Flattering for all and perfect for layering. Horizontal logo on left hip.

A962 999 0485

S / M / L / XL - \$46.00

Pandosa

A staple for everyone's wardrobe, this stylish tee features a scoop neck and long sleeves. Star logo embroidered on left cuff.

A962 999 0486

S / M / L / XL - \$46.00



Ladies Rhinestone Visor

Useful and fashionable, this 3 panel visor features washed chino twill for comfort and hook and loop closure. Star logo in rhinestones on front panel.

A962 999 0496

\$20.00

Dolman

This fashion-forward shirt is wide at the armhole, narrow at the wrist, minimizing the appearance of the waist line. Star logo embroidered on left shoulder.

A962 999 0484

S / M / L / XL - \$56.00



menswear



Est. 1886 T-shirt

This fashion-forward t-shirt shows how far Mercedes-Benz has come in the last 125 years. Made from 25% cotton/50% polyester/25% rayon with a heathered texture for comfort. Mercedes design on full chest; Star logo on left sleeve.

A962 999 0468

M / L / XL / XXL –\$35.00



Soft Trucker Mesh Cap

Structured chino twill cap is low profile and features soft mesh back and sides, Stacked logo embroidered on front crown.

A962 999 0463

\$18.00

Skull Cap - wide stripe

Cap is 100% acrylic and one size fits most. Approx. 8" long with horizontal logo embroidered on one side.

A962 999 0460

\$11.00

Pineapple Mesh Cap

Structured cap is low profile with moisture-wicking to keep your head comfortable. Star logo embroidered on crown, word brand on back strap.

A962 999 0462

\$20.00

Men's Wrinkle Free Shirt

Great shirt which can be dressed up or down as the occasion requires! Easy care material with wrinkle free finish features a hidden button-down collar, left chest pocket and tailored adjustable cuffs. Star logo embroidered on left cuff.

A962 999 0475

M / L / XL / XXL –\$66.00

Driver's Cap

Features for this cap include a snap button closure, mesh sweatband, poplin lining and a stretch fit. One size fits most. Word brand embroidered on one side; Star on back.

A962 999 0461

\$21.00

Hardwood Polo

Polo combines moisture-wicking properties with an anti-bacterial treatment for comfort year round. Stacked logo laser-etched on right shoulder.

A962 999 0470

M / L / XL / XXL –\$62.00

Color Block Polo

Easy care polo features color-blocking design and three-button placket. Stacked logo embroidered on left chest.

A962 999 0474

M / L / XL / XXL –\$45.00

Princeton Polo

Polo combines moisture-wicking properties with an anti-bacterial treatment for comfort year round. Stacked logo embroidered on left sleeve.

A962 999 0459

M / L / XL / XXL –\$62.00

Summit Soft Shell

This jacket features a 3-layer performance softshell with 100% polyester fleece lining. Zipper front with zipper cover finish and long sleeves with velcro tape at end of sleeves. Right side chest pocket with matching zipper, two front hip pockets and interior left side security pocket with audio port access. Stacked logo on left chest.

A962 999 0469

M / L / XL / XXL –\$100.00



handbags & totes

Camel Medium Tote

Overall bag size is 9.5" (L) x 7.5" (H) x 4" (W), and features 24" handles with 11" drop. Metal feet for protection and four internal slip pockets (2) 4"x1", (1) 4"x5.5" & (1) 4"x3". Star emblem in bottom corner.

A962 999 0450
\$120.00

League Mini Messenger

Overall bag size is 9.5" (L) x 10" (H) x 1.5" (W), with an adjustable strap that goes from 26" with 12" drop up to 51" with 25" drop. Features brushed nickel hardware and three internal slip pockets (1) 5.5"x1", (1) 5.5"x5.5" & (1) 5.5"x3". Star emblem in bottom corner.

A962 999 0451
\$130.00



Mini Wristlet

An adorable wristlet that doubles as an attachable coin purse. Attaches to the interior D ring in most Seatbelts and is made of durable automotive seatbelt. Overall bag size 6" (L) x 3.5" (H). Includes an 11" chrome chain strap with 5.5" drop and smooth zip-top closure. Star emblem in bottom corner.

A962 999 0502
\$50.00



Plaza Medium Satchel

A fresh spin on our classic weave, the Plaza Tote has a brand new handle system that's even more durable – they're now 100% seatbelt! We even added a full zip-top closure for extra security! Inspired by exhilarating big-city-style shopping jaunts, Plaza sets the tone for a chic shopping experience! Overall bag size 11.5" (L) x 9.5" (H) x 6" (W). Smooth zip-top closure with 25" tube seatbelt handles with a 10.5" drop. Fully lined with metal feet for protection. Four internal slip pockets: (2) 3.5" x 1", (1) 9" x 6", (1) 3.5" x 6". One internal zip pocket 6.5" x 4" and a D-ring accessory for key ring. Star emblem in bottom corner. **While supplies last.**

A962 999 0413
\$258.00

model cars

CLS Class C218/Red - 1:43

The detailed model is mounted on a black pedestal with plexiglass case. Scale: 1:43 Manufacturer: Norev. *Collector's Item Only. Not intended for children under 14 years of age.*

B6 696 1295
\$33.00



Obsidian Black E-Class Coupe, Scale 1:18

The detailed model has movable parts such as trunk, hood and doors. Manufacturer: Norev. *Collector's Item Only. Not intended for children under 14 years of age.*

B6 696 2418
\$60.00



CLS Class C218/Titanium - 1:18

The detailed model is mounted on a black pedestal with plexiglass case. Scale: 1:18. Manufacturer: Norev. *Collector's Item Only. Not intended for children under 14 years of age.*

B6 696 1298
\$74.00

SLK Class Blue Roadster Model Car - 1:87

SLK Class Roadster model car. Highly detailed miniature. 1:87 scale. Manufacturer: Herpa Mercedes-Benz. *Collector's Item Only. Not intended for children under 14 years of age.*

B6 696 0506
\$19.50



To view the entire model car selection, please visit the Mercedes-Benz Lifestyle website.

Holiday



Set of 4 Stemless Wine Glasses

Includes 4 - 21 oz. stemless red wine glasses in deluxe box with blue velvet lining. Star logo laser engraved on glasses.

A962 999 0505

\$95.00



Ladies "Bling" Compact Mirror

Standard and magnifying mirror. High-polished chrome finish with crystals. Mirror magnification is 2X. Horizontal logo on top.

.962 999 0504

18.00



Martini Gift Set

Stunning ribbed design on the stainless steel shaker. Includes two beautiful matching glasses in a gift box. Star logo laser engraved on shaker and glasses.

A962 999 0507

\$140.00

Leather Cigar Case

Black leather three-cigar case with a stainless cutter and lighter. Stacked logo laser engraved on cutter and lighter, star debossed on outside of case.

Dimensions: 6.75" x 3.75" x 1.75".

A962 999 0506

\$94.00



Lambswool Throw

100% polyester, reversible self-hemmed throw. Stacked logo centered on corner. 50" x 60".

A962 999 0342

\$95.00

Kid's SL Red Electric Car

The one-seater car has a 6 volt battery with hard plastic wheels. Holds up to 60lbs. Recommended for ages 3-6 years old.

B6 696 1292

\$425.00

Kid's SLK Blue Pedal Car

With this pedal car, even three year old children will become a race driver. With additional brake and hard plastic seat. For children over 3 years. Length / width / height: 46.3 x 23.2 x 14.9 inches.

B6 696 1286

\$315.00



To view all of the electric and pedal car options, please visit the Mercedes-Benz Lifestyle website.

To order, contact local Dealer, visit our website or call 1.800.FOR.MERCEDES (800.367.6372)

ORDERING INFORMATION

To order, contact local Dealer, visit www.accessories.mbusa.com or call 1.800.FOR.MERCEDES (800.367.6372). We accept the following major credit cards: Visa, MasterCard, American Express and Discover.

WARRANTY/RETURNS

All merchandise is warranted for workmanship and quality for 180 days from date of purchase. If your shipment is damaged, please return to the address listed on the back of the original packing slip or call Customer Service at 1.800.FOR.MERCEDES (800.367.6372) for return address info. Send your return prepaid via UPS or FedEx. CODs cannot be accepted.

Refunds will be issued to the credit card used for the purchase. Shipping charges are not refundable. Refer to the back of the original packing slip for more information. If you have any questions, please contact Customer Service at 1.800.FOR.MERCEDES (800.367.6372). Be sure to reference Warranty/Returns as the subject. Please have ready the order number and the item number of what you would like to return.

If your shipment is damaged in transit, please contact our Customer Service Department immediately and save all packaging.

MAILING PREFERENCE SERVICE/PRIVACY POLICY

Thank you for providing information that will allow us to serve you better. Mercedes-Benz USA, LLC takes your privacy very seriously. Please be assured that we follow a policy of not selling or trading personal information about our customers or prospective customers to any company or any person outside of Mercedes-Benz USA, LLC other than our affiliate companies and our authorized Mercedes-Benz dealers. If you are receiving duplicate catalogs, if we do not have your correct name or address, or if you would like to stop receiving a catalog, please call Customer Service at 1.800.FOR.MERCEDES (800.367.6372).

Visit website for shipping information.

MISPRINTS

All illustrations and specifications contained in this catalog are based on the latest product information available at the time of publication. Actual offerings may vary from those shown or may be subject to availability delays or discontinuance.

Mercedes-Benz reserves the right to make changes at any time, without notice, in colors, materials, equipment, specifications and pricing. Any variations in colors shown are due to reproduction variations in the print process.

Mercedes-Benz USA, LLC
One Mercedes Drive
Montvale, NJ 07645

1.800.FOR.MERCEDES (800.367.6372)

MBUSA.com

©Mercedes-Benz USA, LLC

A Daimler Company

Printed in the United States of America

