



CLS

Brief overview

Mercedes-Benz



Cockpit – overview



1 Seat functions

Adjusts the seat electrically

- Seat heating
- Seat ventilation
- Adjusts the front-passenger seat
- Memory function and presets
1 2 3

2 Light switch

3 Driver assistance systems

- Active Steering Assist
- Active Lane Keeping Assist
- Switches off Parking Assist PARKTRONIC
Depending on the equipment, the button may also be at position 12.
- Head-up display

4 Multifunction steering wheel control panels

WARNING Make sure that you read the entire Operator's Manual. Otherwise, you may not recognize dangers.

Cockpit – overview

- 5 DIRECT SELECT selector lever
- 6 Multimedia system display
- 7 Rocker switches for automatic climate control
- 8 **Direct buttons for main functions of the multimedia system**
 - NAVI Navigation menu
 - RADIO Radio menu
 - MEDIA Media menu
 - TEL Telephone menu
 - Vehicle menu
 - Hazard warning lamps
- 9 **Multimedia system controller**
Adjusts the volume
Press: Mute function
 - Switches the multimedia system on/off
 - Rear window roller sunblind
 - Multimedia system main menu
 - Back button

- 10 Multimedia system touchpad
- 11 **Driving functions**
 - DYNAMIC SELECT
 - Vehicle level
 - Active Parking Assist
 - ECO start/stop function
- 12 Electric parking brake
- 13 Opens or closes the trunk lid
- 14 Door control panel with controls for power windows, exterior mirror settings and the override feature in the rear compartment
- 15 **Door handle**
 - Locks the vehicle centrally
 - Unlocks the vehicle centrally



Overhead control panel

- 1 Buttons for interior lighting and reading light
- 2 MB info call* (mbrace®)
E.g. for questions on vehicle operation
- 3 SOS button* (mbrace®)
- 4 Breakdown assistance call* (mbrace®)
- 5 Panorama roof
Front roller sunblind
- 6 MAGIC SKY CONTROL or
Rear roller sunblind

* Not available in all countries

Note that your vehicle may not be equipped with all of the features described.

Lever on the steering wheel



Overview

- 1 Combination switch for turn signals, high-beam headlamps and windshield wipers
- 2 Lever for electrical steering column adjustment and steering wheel heating



Combination switch – windshield wiper functions

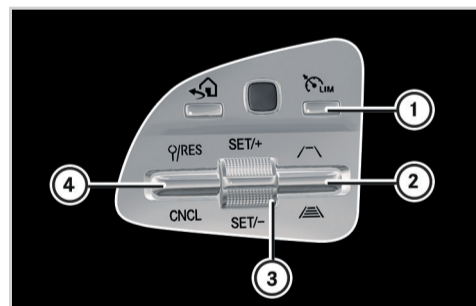
- 1 Single wipe
- Wiping with washer fluid
- 1 0 Windshield wipers off
- 2 ... Intermittent wiping, normal
- 3 Intermittent wiping, frequent
- 4 — Continuous wiping, slow
- 5 = Continuous wiping, fast

Combination switch – lighting functions

- 1 High-beam headlamps or Adaptive Highbeam Assist Plus
- 2 Turn signal, right
- 3 Headlamp flasher
- 4 Turn signal, left

WARNING Make sure that you read the entire Operator's Manual. Otherwise, you may not recognize dangers.

Active Distance Assistant DISTRONIC



Activating/deactivating

- 1 Activates or deactivates Active Distance Assist DISTRONIC
- 3 Activates Active Distance Assist DISTRONIC with the current speed
- 4 Activates with the stored speed/pulls away with Active Distance Assist DISTRONIC
- Deactivates Active Distance Assist DISTRONIC



Changing the speed

- 2 Increases the specified minimum distance
- Reduces the specified minimum distance
- 3 Increases the speed
- Decreases the speed

Active Distance Assist DISTRONIC maintains a constant speed which has been stored. The lowest speed that can be set is 12 mph (20 km/h).

You can change the set speed:

- ▶ **1 mph (1 km/h) step:** briefly press rocker switch 3 up or down.
- ▶ **5 mph (10 km/h) step:** push rocker switch 3 up or down beyond the pressure point.

Using rocker switch 2, you can change the specified minimum distance to the vehicle in front. The specified minimum distance depends on the currently driven speed.

If rocker switch 4 is pressed upwards twice, Active Distance Assist DISTRONIC is activated with the speed restriction displayed in the instrument cluster.

Note that your vehicle may not be equipped with all of the features described.

Climate control



Operating possibilities for climate control

You can set automatic climate control using:

- the rocker switches on control unit 1 of the center console
- the climate control menu of the multimedia system

Air-conditioning function bar 2 shows the most important settings and the status of automatic climate control.

Automatic climate control panel

- Sets the temperature
- Sets the air distribution
- Sets the air flow, switches automatic climate control off completely
- Sets climate control to automatic mode
- Defrosts the windshield
- Calls up the climate control menu
- If you press and hold the **MENU** button for approximately 4 seconds, automatic climate control will be reset to the basic settings.
Residual heat with the engine off
- Defrosts the rear window
- Synchronized operation
- Air-recirculation mode
The air in the interior is recirculated; the windows may mist up more quickly.
- Cooling with air dehumidification

Climate control menu of the multimedia system

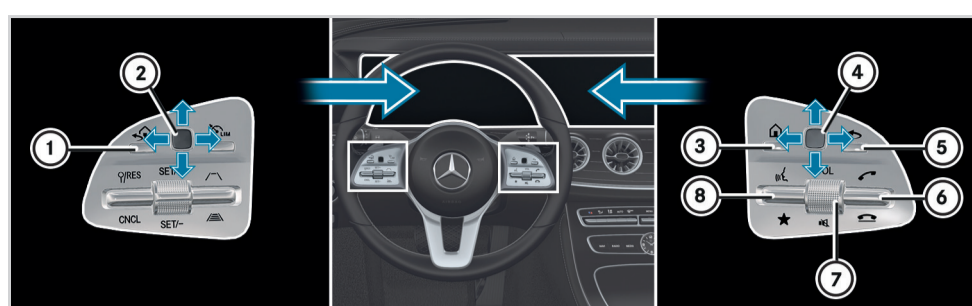
▶ **To call up the climate control menu:** Press the **MENU** rocker switch on the control panel up or down.

- **SYNC** – Changes settings for all climate zones in the vehicle simultaneously
- **A/C** – Deactivates the cooling function of automatic climate control
- **Climate Mode** – Changes the air flow
- **Air Freshener** – Sets the intensity of the perfume atomizer
- **Ionization** – Freshens the air in the vehicle interior using ionization



Order no. P257 0037 13 Part no. 257 584 50 00 Edition A-2019

Buttons on the multifunction steering wheel



- ⑦ **VOL** Adjusts the volume
Press: Switches the mute function on/off
- ⑧ **MUTE** Starts a dialog with the Voice Control System or cancels the current Voice Control System voice command
- ★ Displays favorites

Operating the on-board computer

- ① **Back** Back button for the on-board computer
- ② **Touch Control** for the on-board computer
Press: Confirms the selection

Telephone/media functions

- ③ **Home** Main menu of the multimedia system
- ④ **Touch Control** for the multimedia system
Press: Confirms the selection
- ⑤ **Back** Back button for the multimedia system
- ⑥ **Phone** Accepts a telephone call
Rejects a telephone call
Ends a call

WARNING Make sure that you read the entire Operator's Manual. Otherwise, you may not recognize dangers.

Voice Control System

Starting a dialog

The Voice Control System allows you to comfortably operate the majority of the multimedia system's functions.

To say a voice command: Press the **Voice** button and say a command after the audible signal.

! If a mobile phone is connected to the multimedia system via Bluetooth® and you press and hold the **Voice** button, the mobile phone's voice control feature is activated.

Voice Control System help functions

- **General information:**
Say the "Help Voice Control System" voice command.
- **Help for the current function:**
Say the "Help" voice command.
- **Help for a specific system:**
Say the voice command for the desired system, e.g. "Help telephone".

Examples

Voice commands for navigation

- "Navigate to Woodward Avenue, Detroit"
Starts route guidance to the named address.
- "Navigate to contact John Doe"
Starts route guidance to a contact in the address book.
- "Nearest gas station"
Further categories are also available: restaurant, car park and rest area.

Voice commands for telephone

- "Call Jane Doe"
Calls the number of a contact in the address book.
- "Latest calls"
Shows the latest calls.

Voice commands for audio mode

- "Station Z100"
Calls up stations which are in range or stored stations.
- "Play Moonlight Sonata"
Plays the named media file. All tracks available in the system can be used.

Note that your vehicle may not be equipped with all of the features described.

Overview of the multimedia system



You can operate the menus of the multimedia system using the controller, touchpad or Touch Control.

- ▶ **Controller:** Turn or slide in the direction of the desired entry.
- ▶ Slide to the left or right in order to open a menu.
- ▶ Confirm your selection by pressing the controller.

- ▶ **Touchpad:** Swipe in the direction of the desired entry.
- ▶ Swipe to the left or right in order to open a menu.
- ▶ Press to confirm your selection.

- ▶ **Touch Control:**
 - ▶ Leaves a menu or switches to the basic menu
 - ▶ Calls up or changes favorites
 - ▶ Rapid access to audio sources

Favorites

Favorites allow you to quickly call up applications which you use regularly.

- ▶ **To call up the menu:** Press the **Home** button. The main functions are displayed.
- ▶ Navigate downwards. The favorites bar is shown.

- ▶ **To create your own favorite:** Select the desired function in the multimedia system.

- ▶ Press and hold the **Home** button until the favorites are displayed.
- ▶ Add your own favorites at the desired position.

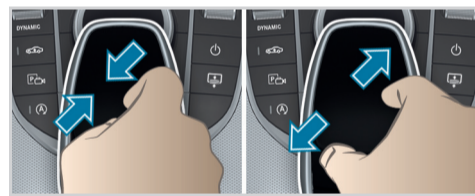
Personalization

You can store your own personal settings for the multimedia system in a user profile.

- ▶ **To call up the menu:** Press the **Home** button.
- ▶ Select **System** ▶ **Personalization**.

WARNING Make sure that you read the entire Operator's Manual. Otherwise, you may not recognize dangers.

Operating the multimedia system



Zooming the map

- ▶ **Touchpad:** Move two fingers apart or together.



- ▶ **Controller:** Turn to the left or right.



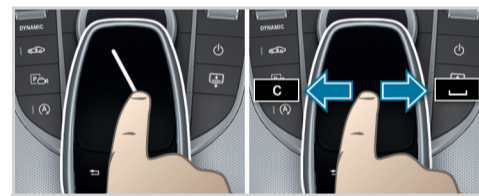
Rapid access to audio sources

Depending on the audio source to which you are currently listening, you can move to the next radio station or music track.

- ▶ **To open the access bar:** Swipe up with two fingers.

or

- ▶ Press the **Next** button on the touchpad.
- ▶ **To select the previous or next station/music track:** Using a single finger, swipe up or down.
- ▶ **To close the access bar:** Swipe down with two fingers.



Handwriting recognition

You can enter individual letters.

- ▶ **To delete [c]:** Swipe to the left.
- ▶ **To insert a space []:** Swipe to the right.

Quickly storing radio stations

If you are listening to the radio and the **Radio** menu is shown in the multimedia system:

- ▶ Press and hold the controller/touchpad/right-hand Touch Control of the multifunction steering wheel. A tone confirms the save.

Note that your vehicle may not be equipped with all of the features described.

Connecting a mobile phone



Requirement

- Bluetooth® is switched on on the mobile phone (see the manufacturer's operating instructions).
- Bluetooth® is switched on on the multimedia system.

Searching for a mobile phone

- ▶ Press the **TEL** button on the center console.
 - ▶ Select **Connect Device**.
 - ▶ Select **Connect a New Device** ▶ **Start Search on System**.
- The available devices are shown in the display. If your mobile phone cannot be found, select **Search from Device**.

Connecting a mobile phone

- ▶ Select the desired mobile phone. A code is displayed in the multimedia system and on the mobile phone.
- ▶ **If the codes match:** Confirm with **Yes** on the multimedia system.
- ▶ Confirm the code on the mobile phone.

Further information

Detailed information on Bluetooth® connections with your mobile phone can be found at:

www.mercedes-benz.com/connect



WARNING Make sure that you read the entire Operator's Manual. Otherwise, you may not recognize dangers.

Further information on your vehicle



Connecting external media sources

- ① SD card slot
- ② USB connections

The USB connection for Apple CarPlay™ and Android Auto™ is marked with the **CarPlay/Android Auto** symbol.



HANDS-FREE ACCESS

If you carry the KEYLESS-GO key on your person, you will be detected by a sensor. Do not touch the bumper and maintain a distance of around 12 in (30 cm).

- ▶ **To open or close:** Kick into the sensor detection area below the bumper.

Further information on your vehicle

Further information about Mercedes-Benz vehicles and about Daimler AG can be found on the following websites:

<http://www.mbusa.com>

If you have any questions, you can optionally also press the **Info** button in the overhead control panel.



How-to videos



Operator's Manual

Note that your vehicle may not be equipped with all of the features described.