



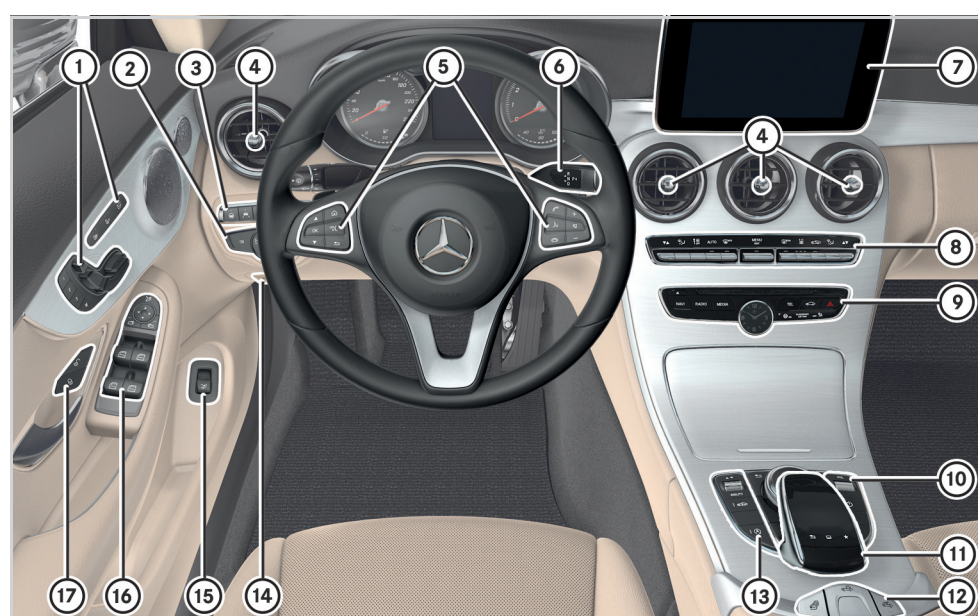
C-Class Cabriolet

Brief overview

Mercedes-Benz



Cockpit – overview



1 Seat functions

Adjusting the seats electrically

- Seat heater
- Seat ventilation
- AIRSCARF
- Memory function and presets
1 2 3

2 Light switch

3 Driver assistance systems

- Steering Assist and Stop&Go Pilot
- Active Lane Keeping Assist
- PARKTRONIC
- 360° camera
- Head-up display

4 Adjusting the air vents: open or closed

WARNING Make sure that you read the entire Operator's Manual. Otherwise, you may not recognize dangers.

Cockpit – overview

- 5 Multifunction steering wheel buttons
- 6 DIRECT SELECT selector lever
- 7 Multimedia system display
- 8 Rocker switches for automatic climate control
- 9 Direct buttons for menus of the multimedia system
 - Hazard warning lights
 - CD/DVD drive
- 10 **Multimedia system controller**
 - Back button
 - Favorites button
 - Adjusting the volume
 - Press: Mute function
 - Switching the multimedia system on/off
 - Seat belt extender
- 11 Multimedia system touchpad

- 12 **Cabriolet functions**
 - Operating all side windows
 - Soft top
 - AIRCAP
- 13 **Driving functions**
 - DYNAMIC SELECT
 - Vehicle level
 - ECO start/stop function
 - 14 Electric parking brake
 - 15 Opening or closing the trunk lid
 - 16 Door control panel with controls for power windows and exterior mirror settings
- 17 **Door handle**
 - Centrally locking the doors
 - Centrally unlocking the doors



Overhead control panel

- 1 Buttons for interior lighting and reading light
- 2 Info call* (mbrace system)
E.g. for questions on vehicle operation.
- 3 SOS button* (mbrace system)
- 4 Breakdown assistance call* (mbrace system)

* Not available in all countries

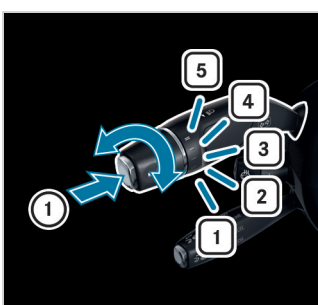
Note that your vehicle may not be equipped with all features described.

Lever on steering wheel



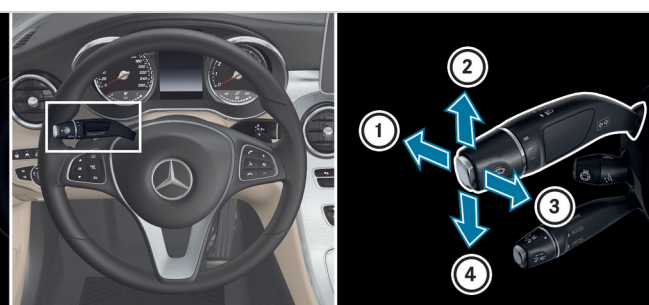
Overview

- 1 Combination switch for turn signals, high-beam headlamps and windshield wipers
- 2 Lever for electrical steering wheel adjustment and steering wheel heating
- 3 Lever for cruise control/Distance Pilot DISTRONIC



Combination switch – windshield wiper functions

- 1 Single wipe
- Wiping the windshield using washer fluid
- 1 Windshield wipers off
- 2 Intermittent wiping, normal
- 3 Intermittent wiping, frequent
- 4 Continuous wiping, slow
- 5 Continuous wiping, fast



Combination switch – lighting functions

- 1 High-beam headlamps or Adaptive Highbeam Assist Plus
- 2 Turn signal, right
- 3 Headlamp flasher
- 4 Turn signal, left

WARNING Make sure that you read the entire Operator's Manual. Otherwise, you may not recognize dangers.

Distance Pilot DISTRONIC



Activating/deactivating

- 1 Switches on with the current speed or calls up the last set speed
- 2 Deactivates Distance Pilot DISTRONIC

Changing the speed

- 3 Increases the speed or stores the current speed
- 4 Decreases the speed or stores the current speed
- 5 Increases the specified minimum distance
- 6 Reduces the specified minimum distance

Distance Pilot DISTRONIC maintains a constant speed which has been stored. The lowest speed that can be set is 20 mph (30 km/h).

You can change the set speed:

- 1 mph (1 km/h) step:** Briefly press the lever up or down.
- 5 mph (10 km/h) step:** Press the lever up or down past the pressure point.

When Distance Pilot DISTRONIC is activated, one or two segments in the set speed range light up in the speedometer.

Using the controller on the DISTRONIC lever, you can change the specified minimum distance to the vehicle in front. The specified minimum distance depends on the currently driven speed.

Note that your vehicle may not be equipped with all features described.

Climate control



Operating possibilities for climate control

You can set automatic climate control using:

- Rocker switches on control unit 1 of the center console
 - Air-conditioning function bar 2 and the climate control menu of the multimedia system
- Air-conditioning function bar 2 shows the most important settings and the status of automatic climate control.

Automatic climate control panel

- Setting the temperature
- Setting the air distribution
- Setting the airflow
- Setting climate control to automatic mode
- Defrosting the windshield
- Calling up the climate control menu
- If you press and hold the button for approximately 4 seconds, automatic climate control is reset to factory settings.
- Residual heat with the engine off
- Defrosting the rear window
- Cooling with air dehumidification
- Air-recirculation mode
- The air in the interior will be recirculated. In air-recirculation mode, the windows can mist up more quickly.



Lower bar of the climate control menu

- Call up the climate control menu:** Press the rocker switch on the control panel up or down.
- Switch to the climate control bar and make a selection.
 - Sync** – Changing settings for all climate zones in the vehicle simultaneously
 - A/C** – Activating or deactivating the cooling function of automatic climate control.
 - Climate Ctrl On** – Completely activating or deactivating automatic climate control.



Order no. P205 0956 13 Part no. 205 584 47 13 Edition A-2018

Buttons on the multifunction steering wheel



Operating the Voice Control System

- 10 Canceling a dialog
- 11 Starting a dialog

Operating the menu of the on-board computer

- 1 Scrolling through lists
- Selecting a menu or function
- 2 Opening the menu list
- 3 Back button
- 4 Confirming the selected entry

Telephone/media functions

- 5 Accepting a telephone call
- 6 Rejecting a telephone call
- 7 Decreasing the volume
- 8 Mute
- 9 Increasing the volume

Note that your vehicle may not be equipped with all features described.

Voice Control System

Starting a dialog

The Voice Control System allows you to comfortably operate the majority of the multimedia system's functions.

► **Say a command:** Press the button and say a command after the audible signal.

❗ If a mobile phone is connected with the vehicle via Bluetooth® and you press and hold the button, the voice assistant of the mobile phone will be started.

Voice Control System help functions

- **General notes:**
Say the "Help Voice Control System" command.
- **Help for the current function:**
Say the "Help" command.
- **Help for a specific system:**
Say the help command for the desired system, e.g. "Help telephone".

If you press the button, the possible commands are shown in a help window. You can switch off the display of this help window in the multimedia system.

Examples

Navigation commands

- **"Enter destination"**
A dialog for entering a destination in the navigation system will be started. Thereafter, say the destination address.
- **"Nearest gas station"**
Many categories for further points of interest are available, e.g. restaurant or tourist attraction.
- **"Navigate to John Doe"**
Start route guidance to a contact from your address book.
- **"Enter state"**
A dialog is started in which a destination in a particular state can be entered.

Telephone commands

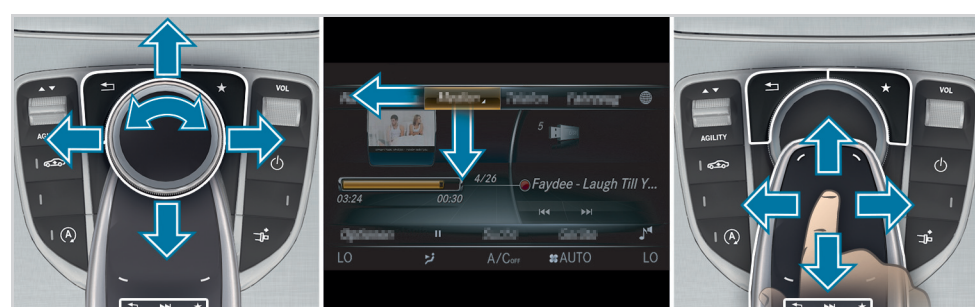
- **"Call John Doe"**
The telephone number of a stored contact is dialed.
- **"Write message"**
A dialog for entering a text message (SMS) will be started.

Audio commands

- **"Station Z100"**
If you are listening to the radio, you can say the name of a station to which you would like to listen.
- **"Free music search"**
A dialog in which you can search through your music files will be started.

WARNING Make sure that you read the entire Operator's Manual. Otherwise, you may not recognize dangers.

Overview of the multimedia system



You can operate the menus of the multimedia system using the controller or the touchpad.

► **Controller:** Turn or slide in the direction of the desired entry.

► Confirm your choice by pressing the controller.

► **Touchpad:** Swipe in the direction of the desired entry.

► Confirm your selection by pressing.

Leaving a menu or switching to the basic menu

Calling up or changing favorites
For rapid saving of audio sources, destinations or addresses, press and hold.

Rapid access to audio sources



Direct buttons for the multimedia system

- Navigation system menu
- Radio menu
- Media menu
- Telephone menu
- Vehicle/system settings menu

Note that your vehicle may not be equipped with all features described.

Operating the multimedia system



Vehicle and sound settings

► **Touchpad:** With two fingers spread slightly apart, turn to the left or right.

► **Controller:** Turn left or right.



Rapid access to audio sources

Depending on the audio source to which you are currently listening, you can move to the next radio station or music track.

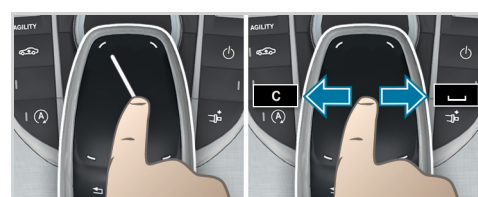
► **Opening the access bar:** Swipe up with two fingers.

or

► Press the button on the touchpad.

► **To select the previous or next station/music track:** Swipe to the left or right.

► **Closing the access bar:** Swipe down with two fingers.



Handwriting recognition

You can enter individual letters.

► **Delete** : Swipe to the left.

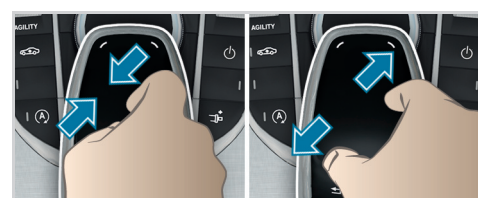
► **To insert a space** : Swipe to the right.

Quickly storing radio stations

If you are listening to the radio and the **Radio** menu is shown in the multimedia system:

► Press and hold the controller or touchpad until the station list is shown.

► Select the desired preset in the station list and confirm.
A tone confirms the save.



Zoom map

► **Touchpad:** Move two fingers apart or together.

WARNING Make sure that you read the entire Operator's Manual. Otherwise, you may not recognize dangers.

Establishing a Bluetooth® connection



Example image: Audio 20

Requirement

- Bluetooth® is switched on on the mobile phone (see the manufacturer's operator's manual).
- Bluetooth® is switched on on the multimedia system.

Searching for a mobile phone

- Press the button on the center console.
- Select **Connect Device** ①.
- Select **Connect New Device**.
- **Audio 20:** Select **Connect via Vehicle** and select the mobile phone.
- Select the intended usage of the mobile phone (main or secondary phone).
- **COMAND:** Select the intended usage of the mobile phone (main or secondary phone).
- Select **Start Search**.
- Select the mobile phone.

If your mobile phone is not found, try searching on the mobile phone itself.

Connecting a mobile phone

A code is displayed in the multimedia system and on the mobile phone.

► **If the codes match:** If necessary, confirm on the multimedia system with **Yes**.

► Confirm the code on the mobile phone.

Symbol

- Main telephone with full range of functions
- Additional telephone for incoming calls in two telephone mode

Further information

Detailed information on Bluetooth® connections with your mobile phone can be found at:

www.mercedes-benz.com/connect



Note that your vehicle may not be equipped with all features described.

Further information on your vehicle



External media sources

USB ports and an SD card slot can be found under the center armrest.

Further information

You can find further information on your vehicle at:

<http://www.mbusa.com>

If you have any questions, you can optionally also press the button in the overhead control panel.



How-to videos



Operator's Manuals

WARNING Make sure that you read the entire Operator's Manual. Otherwise, you may not recognize dangers.