



E-Class Sedan

Brief Instructions

Mercedes-Benz



Cockpit – overview



- ① **Seat functions**
Adjusts the seats electrically
 - Seat heater
 - Seat ventilation
 - Adjusts the front-passenger seat
 - Memory function and presets
1 2 3
- ② Light switch
- ③ Adjusts the air vents:
open or closed
- ④ **Driver assistance systems**
 - Active Steering Assist
 - Active Lane Keeping Assist
 - Deactivates PARKTRONIC
Depending on the equipment, the button may also be at position ⑫.
 - Head-up display
- ⑤ Multifunction steering wheel control panels

WARNING Make sure that you read the entire Operator's Manual. Otherwise, you may not recognize dangers.

Cockpit – overview

- ⑥ DIRECT SELECT selector lever
- ⑦ Multimedia system display
- ⑧ Rocker switches for automatic climate control
- ⑨ **Direct buttons for main functions of the multimedia system**
 - Navigation system menu
 - Radio menu
 - Media menu
 - Telephone menu
 - Vehicle menu
 - Hazard warning lights
- ⑩ **Multimedia system controller**
Adjusts the volume
Press: Mute function
 - Switches the multimedia system on/off
 - Rear window blind
 - Multimedia system main menu
 - Back button
- ⑪ Multimedia system touchpad
- ⑫ **Driving functions**
 - DYNAMIC SELECT
 - Vehicle level
 - Parking Pilot
 - ECO start/stop function
 - ⑬ Electric parking brake
 - ⑭ Opens or closes the trunk lid
 - ⑮ Door control panel with controls for power windows, exterior mirror settings and the override feature in the rear
 - ⑯ **Door handle**
 - Centrally locks the vehicle
 - Centrally unlocks the vehicle



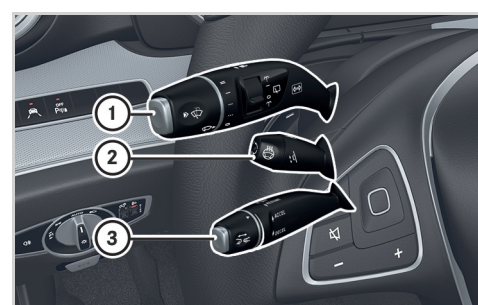
Overhead control panel

- ① Buttons for interior lighting and reading light
- ② Info call* (mbrace system)
E.g. for questions on vehicle operation
- ③ SOS button* (mbrace system)
(Mercedes-Benz emergency call system)
- ④ Breakdown assistance call* (mbrace system)
- ⑤ Panorama roof
Roller sunblind

* Not available in all countries

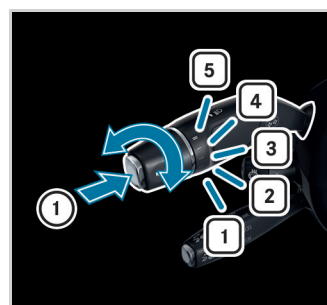
Bear in mind that your vehicle may not feature all functions described here.

Lever on the steering wheel



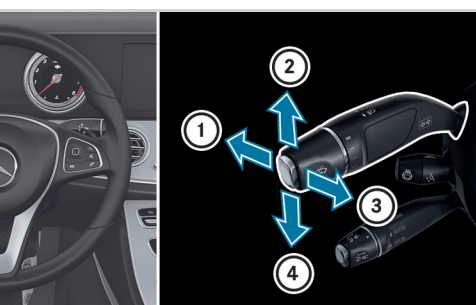
Overview

- ① Combination switch for turn signals, high-beam headlamps and windshield wipers
- ② Lever for electrical steering wheel adjustment and steering wheel heating
- ③ Lever for cruise control/Active Distance Assist DISTRONIC



Combination switch – windshield wiper functions

- ① Single wipe
- Wipes the windshield using washer fluid
- ① Windshield wipers off
- ② Intermittent wiping, normal
- ③ Intermittent wiping, frequent
- ④ Continuous wiping, slow
- ⑤ Continuous wiping, fast



Combination switch – lighting functions

- ① High-beam headlamps or Adaptive Highbeam Assist Plus
- ② Turn signal, right
- ③ Headlamp flasher
- ④ Turn signal, left

WARNING Make sure that you read the entire Operator's Manual. Otherwise, you may not recognize dangers.

Active Distance Assist DISTRONIC



Switching on/off

- ① Switches on with the current speed or calls up the last set speed
- ② Deactivates Active Distance Assist DISTRONIC

Changing the speed

- ③ Increases the speed or stores the current speed
- ④ Decreases the speed or stores the current speed
- ⑤ Increases the specified minimum distance
- ⑥ Reduces the specified minimum distance

Active Distance Assist DISTRONIC maintains a constant speed which has been stored. The lowest speed that can be set is 20 mph (30 km/h).

You can change the set speed:

- 1 mph (1 km/h) step:** Briefly press the lever up or down.
- 5 mph (10 km/h) step:** Press the lever up or down past the pressure point.

When Active Distance Assist DISTRONIC is activated, one or two segments in the set speed range light up in the speedometer.

Using the controller on the DISTRONIC lever, you can change the specified minimum distance to the vehicle in front. The specified minimum distance depends on the currently driven speed.

Bear in mind that your vehicle may not feature all functions described here.

Climate control



Operating possibilities for climate control

- You can set automatic climate control using:
- The rocker switches on control unit ① of the climate control
 - The climate control menu of the multimedia system

Air-conditioning function bar ② shows the most important settings and the status of automatic climate control.

Automatic climate control panel

- Sets the temperature
- Sets the air distribution
- Sets the air flow, switches automatic climate control off completely
- Sets climate control to automatic mode
- Defrosts the windshield
- Calls up the climate control menu
If you press and hold the **[MENU]** button for approximately 4 seconds, automatic climate control will be reset to the basic settings.
- Defrosting the rear window
- Synchronized operation
- Air-recirculation mode
The air in the interior will be recirculated; the windows may fog up more quickly.
- Cooling with air dehumidification

Climate control menu of the multimedia system

- To call up the climate control menu:** Press the **[MENU]** rocker switch on the control panel up or down.
 - **SYNC** – Changes settings for all climate zones in the vehicle simultaneously
 - **A/C** – Deactivates the cooling function of automatic climate control
 - **Climate Mode** – Changes the air flow
 - **Air Freshener** – Sets the intensity of the perfume atomizer
 - **Ionization** – Freshens the air in the vehicle interior using ionization



Order no. P213 0711 13 Part no. 213 584 94 07 Edition B-2018

Buttons on the multifunction steering wheel



Operating the on-board computer

- ① Touch Control for on-board computer
- ② Main menu and back button for on-board computer
- ③ Mute function
- ④ Decreases the volume
- ⑤ Increases the volume

Telephone/media functions

- ⑥ Touch Control for multimedia system
- ⑦ Main menu and back button for multimedia system
- ⑧ Rejects a telephone call
Ends a call
- ⑨ Accepts a telephone call

Operating the Voice Control System

- ⑩ Starts a dialog or cancels the current command

WARNING Make sure that you read the entire Operator's Manual. Otherwise, you may not recognize dangers.

Voice Control System

Starting a dialog

The Voice Control System allows you to comfortably operate the majority of the multimedia system's functions.

To say a command: Press the button and say a command after the audible signal.

i If a mobile phone is connected with the vehicle via Bluetooth® and you press and hold the button, the voice assistant of the mobile phone will be started.

Voice Control System help functions

- **General information:**
Say the "Help Voice Control System" command.
- **Help for the current function:**
Say the "Help" command.
- **Help for a specific system:**
Say the help command for the desired system, e.g. "Help telephone".

Examples

Navigation commands

- "Navigate to Woodward Avenue, Detroit"
Starts route guidance to the named address.
- "Navigate to John Doe"
Starts route guidance to a contact in the address book.
- "Nearest gas station"
Further categories are also available: restaurant, parking lot and rest area.

Telephone commands

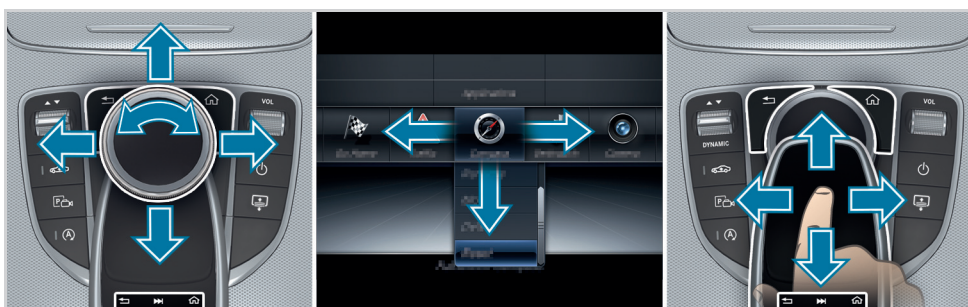
- "Call Jane Doe"
Calls the number of a contact in the address book.
- "Last calls"
Shows the most recent calls.

Audio commands

- "Station Z100"
Calls up stations which are in range or stored stations.
- "Play Moonlight Sonata"
Plays the named media file. All tracks available in the system can be used.

Bear in mind that your vehicle may not feature all functions described here.

Overview of the multimedia system



You can operate the menus of the multimedia system using the controller, touchpad or Touch Control.

- ▶ **Controller:** Turn or slide in the direction of the desired entry.
- ▶ Slide to the left or right in order to open a menu.
- ▶ Confirm your choice by pressing the controller.

- ▶ **Touchpad:** Swipe in the direction of the desired entry.
- ▶ Swipe to the left or right in order to open a menu.
- ▶ Confirm your selection by pressing.

- Leaves a menu or switches to the basic menu
- Calls up or changes favorites
- Rapid access to audio sources

Favorites

Favorites allow you to quickly call up applications which you frequently use.

- ▶ **To call up the menu:** Press the button. The main functions are displayed.
- ▶ Navigate downwards. The favorites bar is shown.

- ▶ **To create your own favorite:** Select the desired function in the multimedia system.

- ▶ Press and hold the button until the favorites are displayed.

- ▶ Add your own favorite at the desired position.

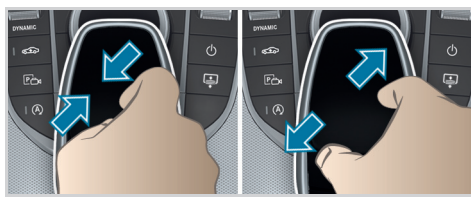
Personalization

You can store your own personal settings for the multimedia system in a user profile.

- ▶ **To call up the menu:** Press the button.
- ▶ Select System >> Personalization.

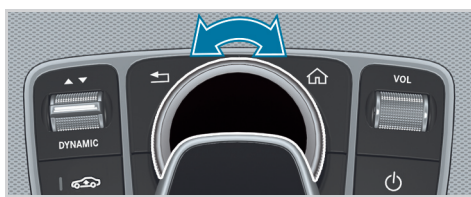
WARNING Make sure that you read the entire Operator's Manual. Otherwise, you may not recognize dangers.

Operating the multimedia system



Zooming the map

- ▶ **Touchpad:** Move two fingers apart or together.



- ▶ **Controller:** Turn left or right.



Rapid access to audio sources

Depending on the audio source to which you are currently listening, you can move to the next radio station or music track.

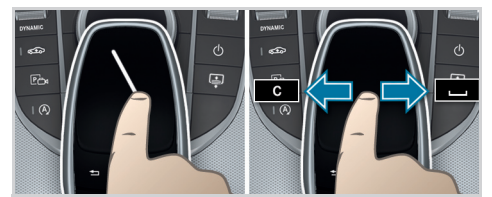
- ▶ **To open the access bar:** Swipe up with two fingers.

or

- ▶ Press the button on the touchpad.

- ▶ **To select the previous or next station/music track:** Using a single finger, swipe up or swipe down.

- ▶ **To close the access bar:** Swipe down with two fingers.



Handwriting recognition

You can enter individual letters.

- ▶ **To delete [c]:** Swipe to the left.

- ▶ **To insert a space []:** Swipe to the right.

Quickly storing radio stations

If you are listening to the radio and the **Radio** menu is shown in the multimedia system:

- ▶ Press and hold the controller or touchpad or the right-hand Touch Control of the multifunction steering wheel. A tone confirms the save.

Bear in mind that your vehicle may not feature all functions described here.

Connecting a mobile phone



Requirement

- Bluetooth® is switched on on the mobile phone (see the manufacturer's operator's manual).
- Bluetooth® is switched on on the multimedia system.

Searching for a mobile phone

- ▶ Press the button on the center console.
- ▶ Select **Connect Device - No Device Connected**.
- ▶ Select **Connect New Device >> Start Search**.

The available devices are shown in the display. If your mobile phone is not found, try searching on the mobile phone itself.

Connecting a mobile phone

- ▶ Select the desired mobile phone. A code is displayed in the multimedia system and on the mobile phone.
- ▶ **If the codes match:** Confirm with **Yes** on the multimedia system.
- ▶ Confirm the code on the mobile phone.

Further information

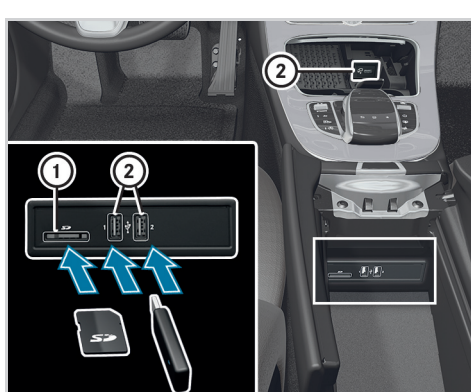
Detailed information on Bluetooth® connections with your mobile phone can be found at:

www.mercedes-benz.com/connect



WARNING Make sure that you read the entire Operator's Manual. Otherwise, you may not recognize dangers.

Further information on your vehicle



Connecting external media sources

- ① SD card slot
- ② USB connections

The USB connection for Apple CarPlay™ and Android Auto™ is marked with the symbol.



HANDS-FREE ACCESS

If you carry the KEYLESS-GO key on your person, you will be detected by a sensor. Do not touch the bumper and maintain a distance of around 12 in (30 cm).

- ▶ **To open or close:** Kick into the sensor detection area below the bumper.

Further information

You can find further information on your vehicle at:

<http://www.mbusa.com>

If you have any questions, you can optionally also press the button in the overhead control panel.



How-to videos



Operator's Manuals

Bear in mind that your vehicle may not feature all functions described here.